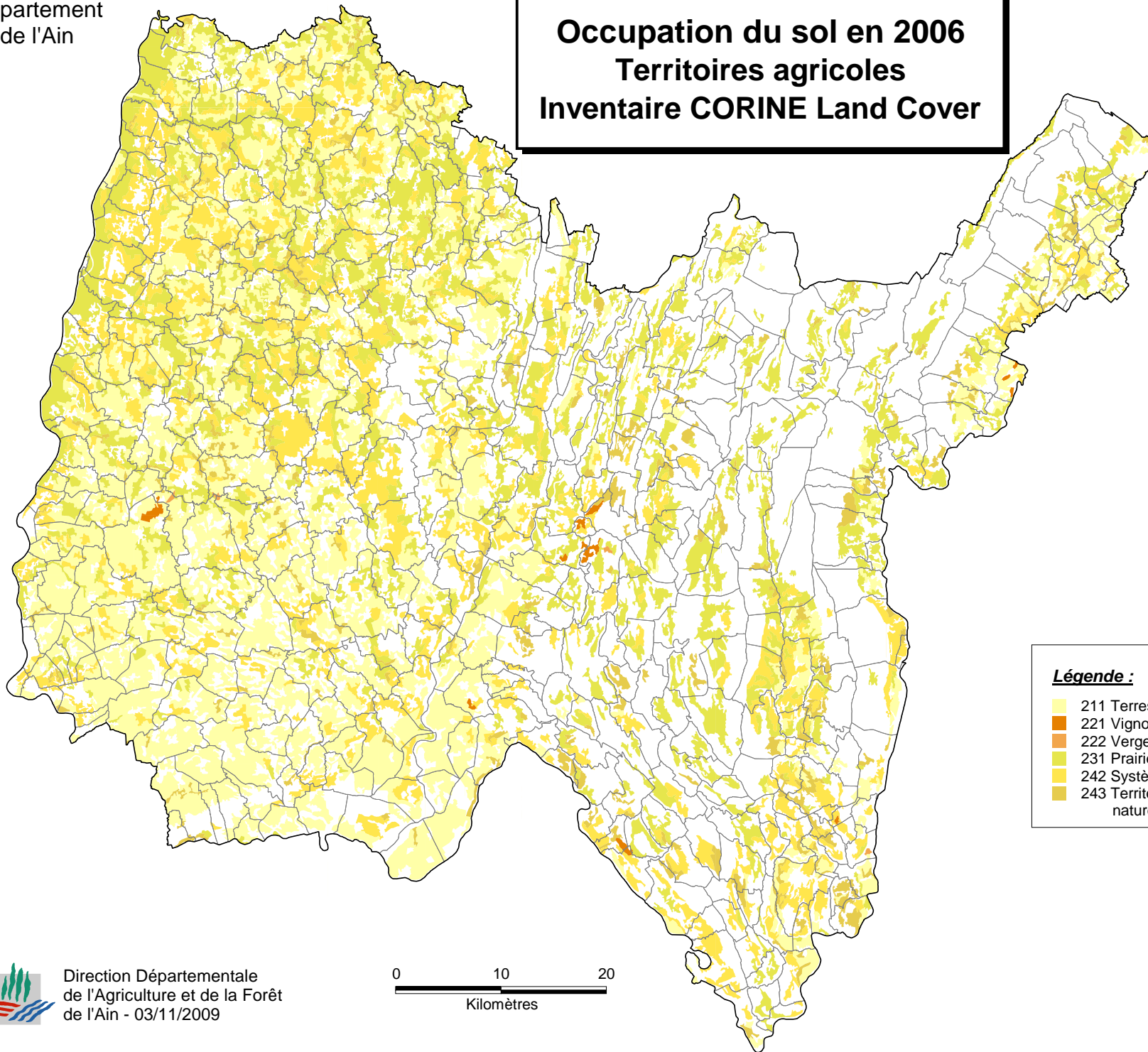








Occupation du sol en 2006
Territoires agricoles
Inventaire CORINE Land Cover



Légende :

-  211 Terres arables hors périmètres d'irrigation
-  221 Vignobles
-  222 Vergers et petits fruits
-  231 Prairies
-  242 Systèmes culturaux et parcellaires complexes
-  243 Territoires surtout agricoles mais avec végétation naturelle importante

