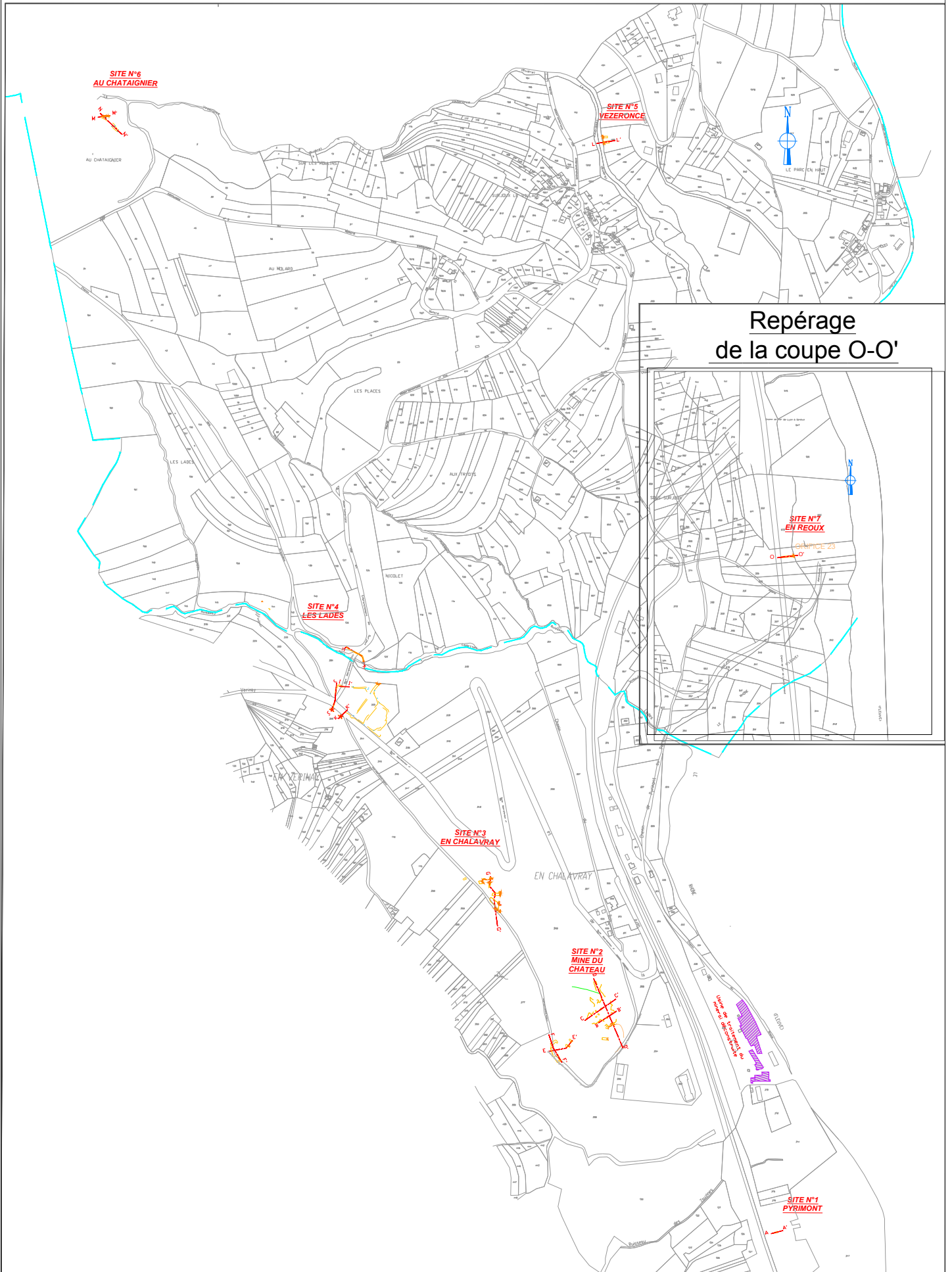


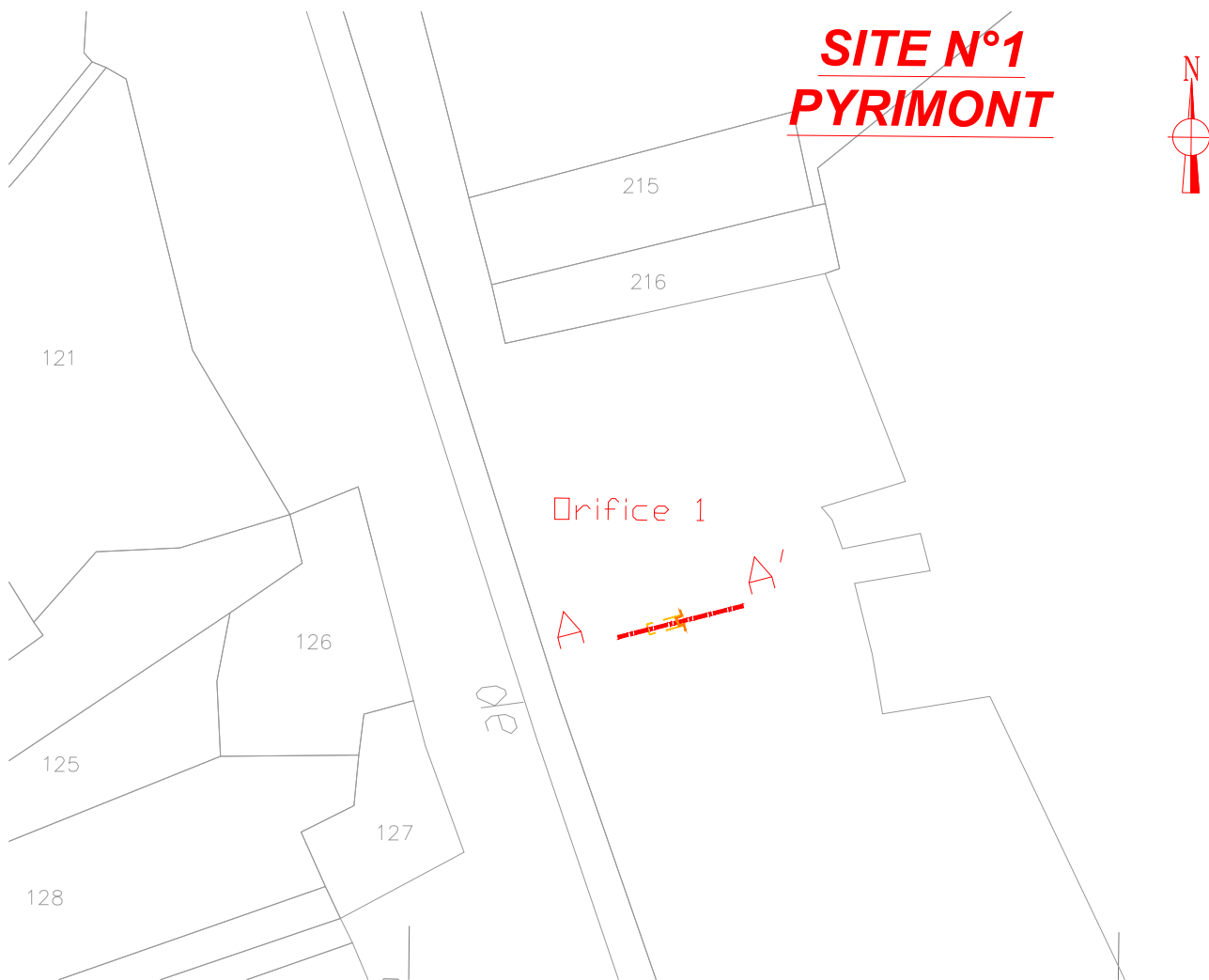
## **Annexe 4 Cahier des coupes des travaux miniers**

# Repérage des coupes A-B à M-N

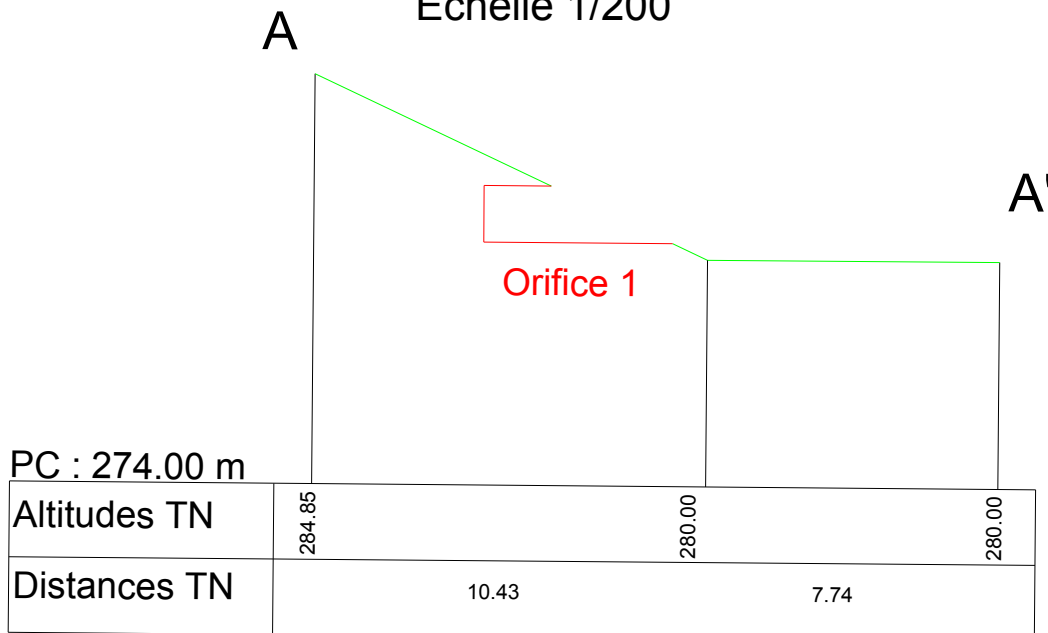
Echelle 1/7500



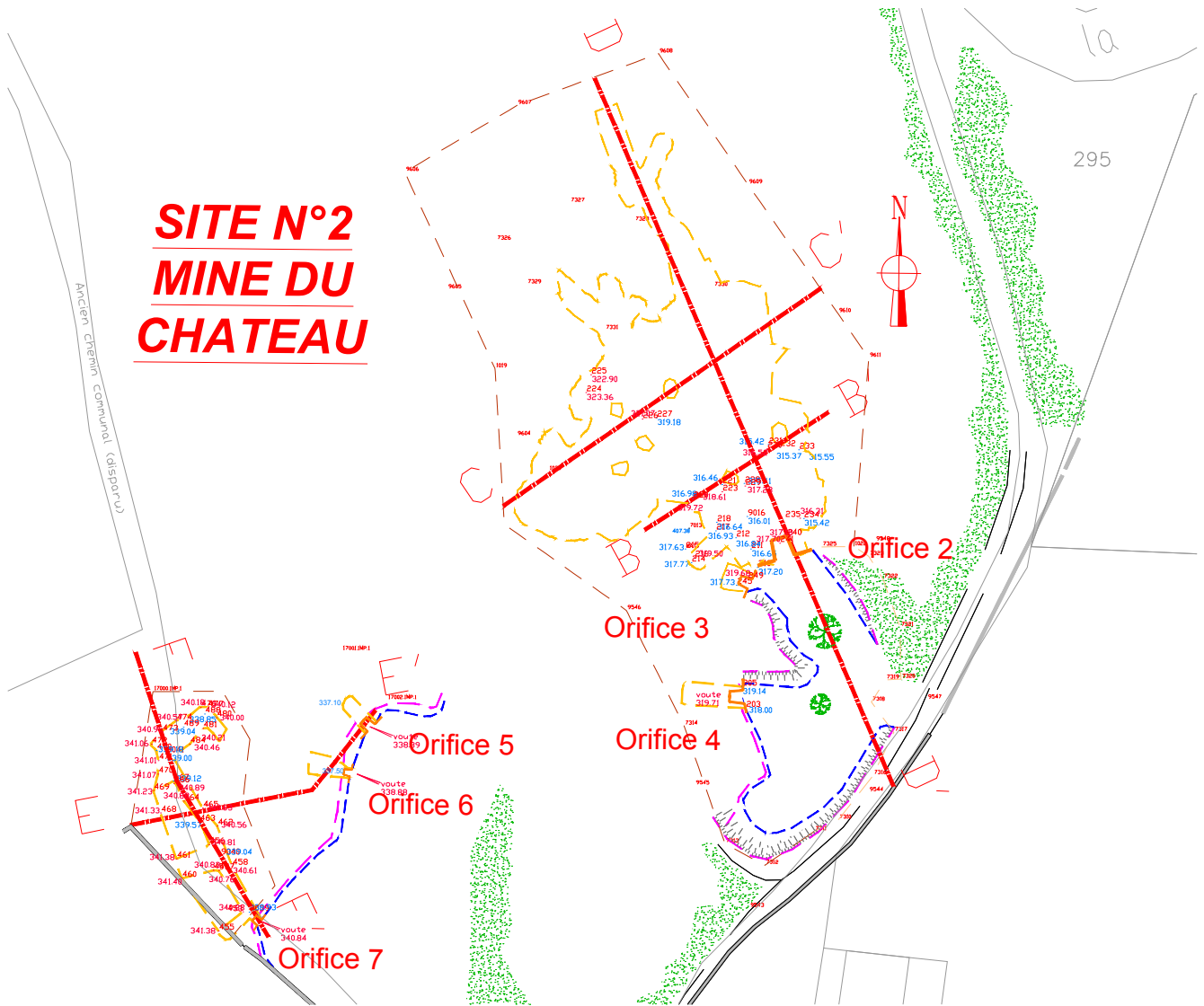
Vue en plan  
Repérage coupe A-A'  
Echelle 1/1000



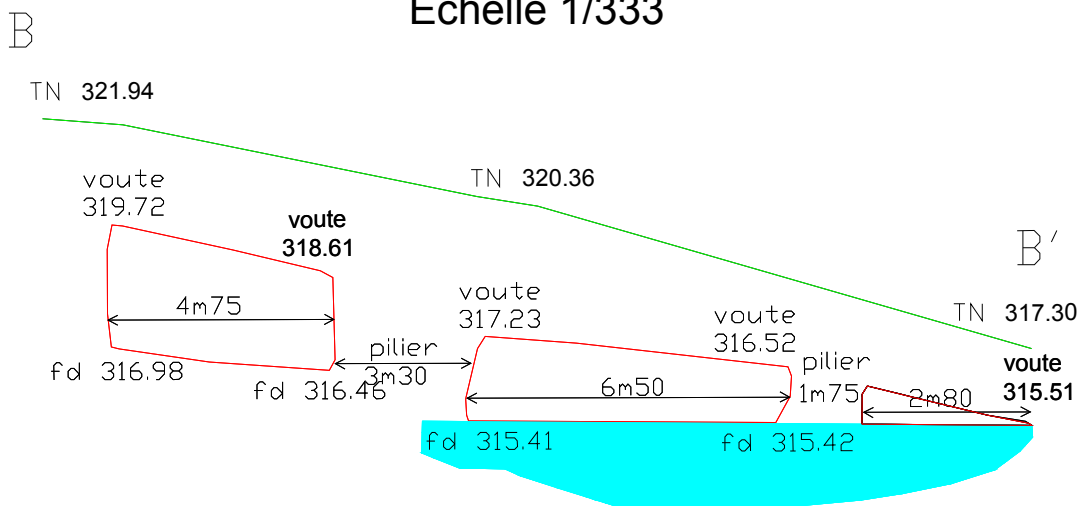
Coupe A-A'  
Echelle 1/200



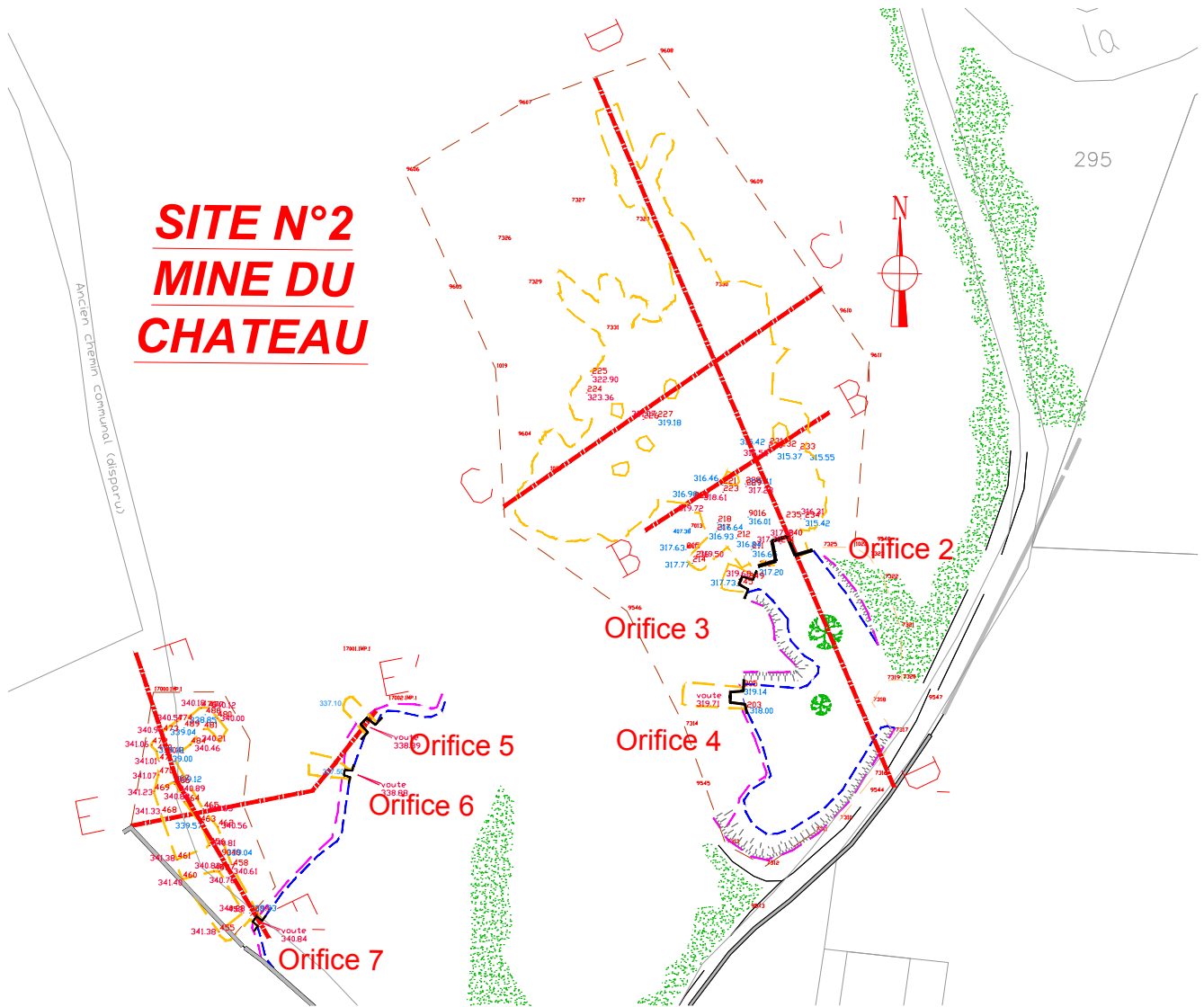
**Vue en plan**  
**Repérage coupe B-B'**  
 Echelle 1/1000



**Coupe B-B'**  
 Echelle 1/333

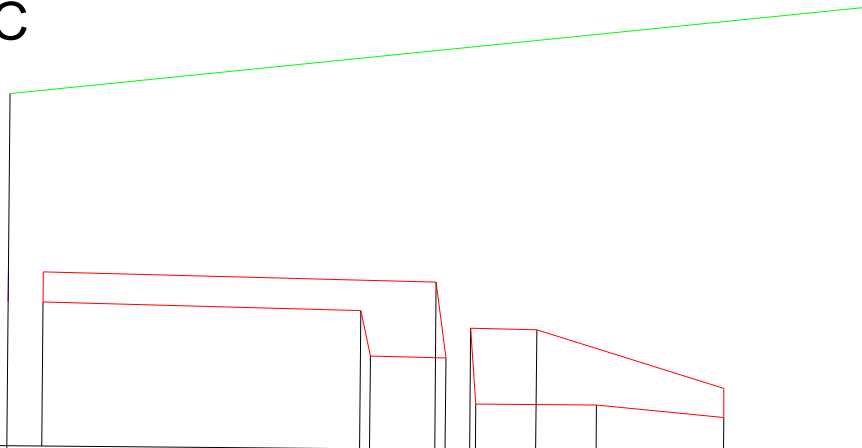


Vue en plan  
Repérage coupe C-C'  
Echelle 1/1000



Coupe C-C'  
Echelle 1/500

C C'



PC : 310.00 m

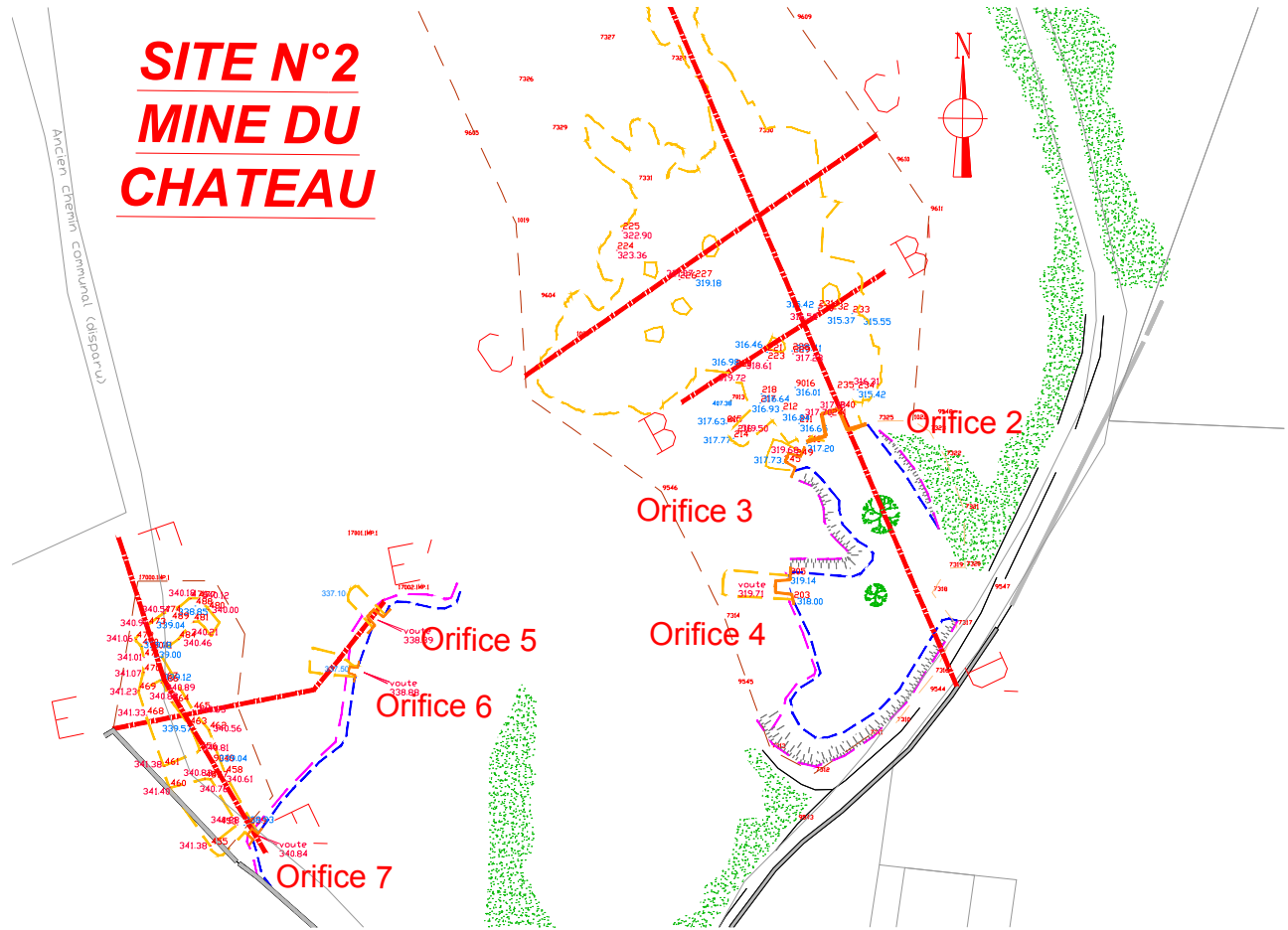
|                       |        |        |        |        |        |        |        |        |        |        |
|-----------------------|--------|--------|--------|--------|--------|--------|--------|--------|--------|--------|
| ALTITUDES TN          | 333.31 |        |        |        |        |        | 339.51 |        |        |        |
| ALTITUDES VOUTE       | 319.53 | 321.53 | 316.16 | 316.07 | 313.06 | 318.04 | 317.97 | 312.27 | 314.21 | 339.51 |
| ALTITUDES FOND CAVITE |        |        | 319.16 | 316.16 | 316.07 | 313.06 | 318.04 | 313.03 | 312.27 | 314.21 |



# Vue en plan

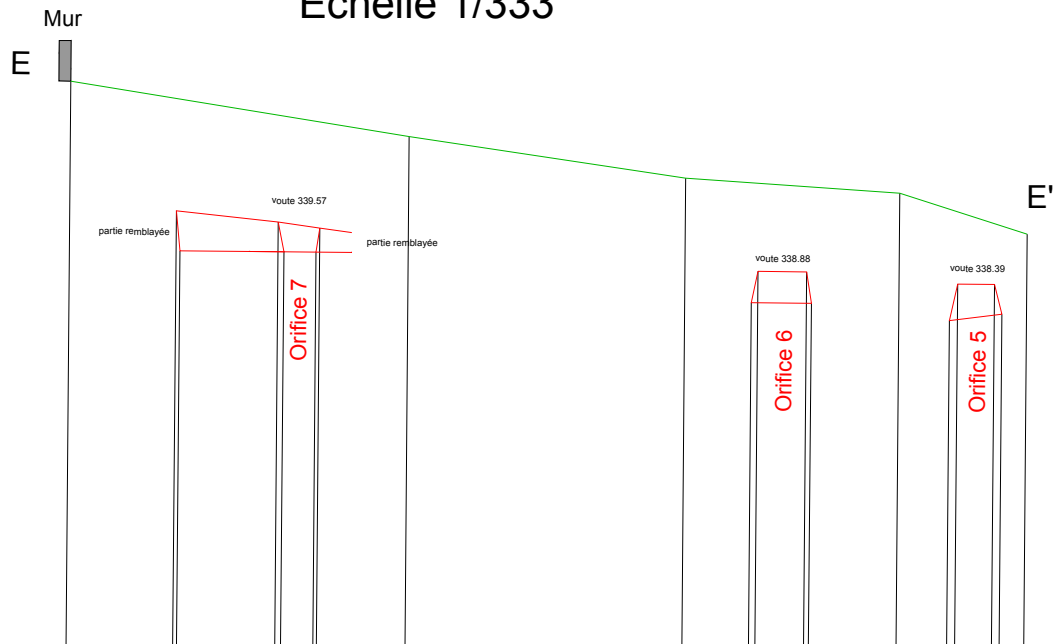
## Repérage coupe E-E'

### Echelle 1/1000



## Coupe E-E'

### Echelle 1/333



PC : 322.00 m

| Numéros des points TN   | 1      | 2      | 45     | 67     | 8      | 9      | 101    | 123    | 14     | 156    | 178    | 19     |
|-------------------------|--------|--------|--------|--------|--------|--------|--------|--------|--------|--------|--------|--------|
| Altitudes TN            | 347.01 | 341.33 | 340.89 | 340.53 | 344.69 | 342.97 | 338.88 | 338.88 | 342.38 | 338.39 | 338.88 | 340.62 |
| Distances partielles TN |        | 4.709  | 4.330  | 1.424  | 3.904  | 12.209 | 2.938  | 2.14   | 3.858  | 2.241  | 1.6038 | 1.084  |
| Distances cumulées TN   | 0.000  | 4.709  | 9.039  | 10.463 | 14.367 | 27.155 | 30.093 | 32.233 | 36.091 | 38.332 | 40.116 | 42.230 |





# Vue en plan Repérage coupe G-G'

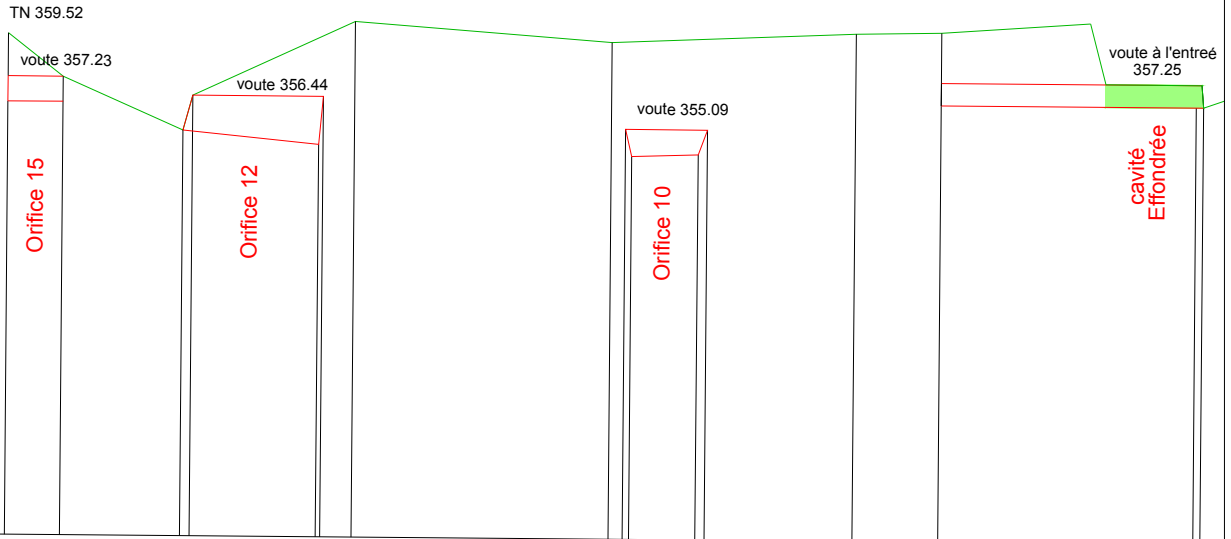
Echelle 1/1500



## Coupe G-G' Echelle 1/333

G

G'



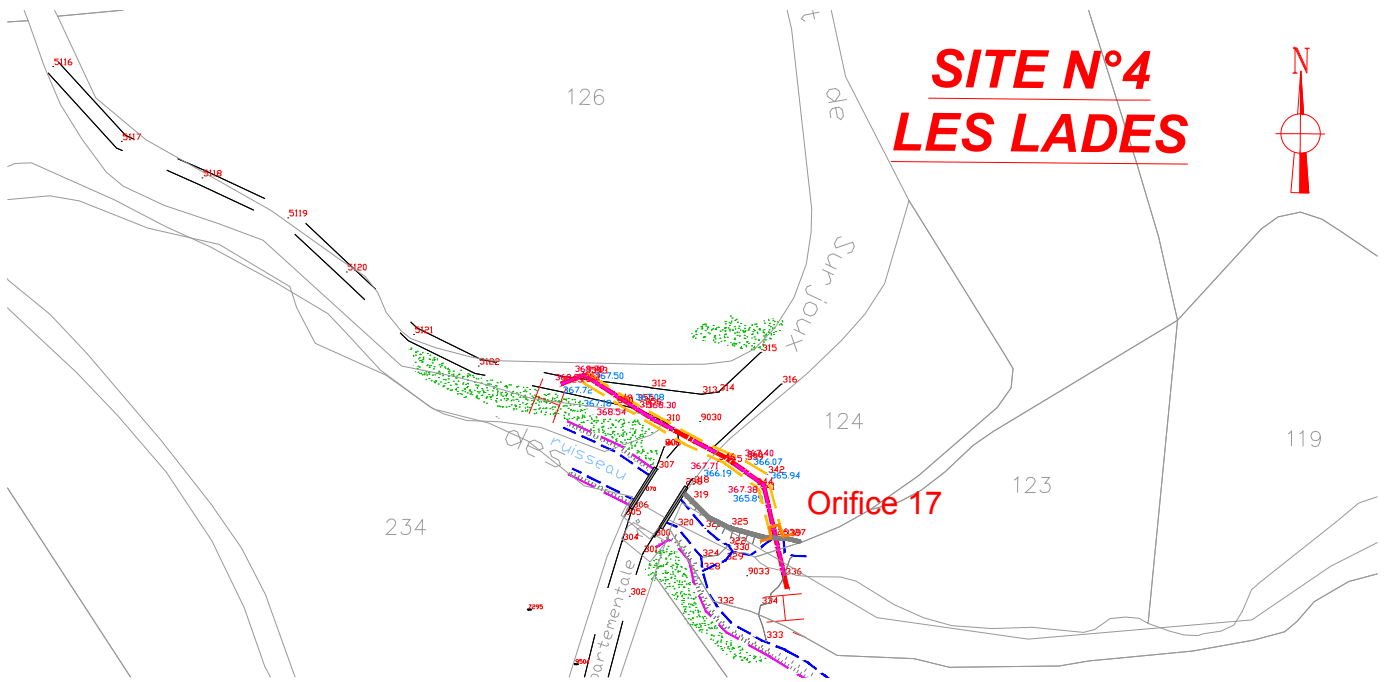
PC : 337.00 m

|                             |                    |                    |                    |                    |                     |                    |                    |                    |                     |        |        |        |        |        |        |        |
|-----------------------------|--------------------|--------------------|--------------------|--------------------|---------------------|--------------------|--------------------|--------------------|---------------------|--------|--------|--------|--------|--------|--------|--------|
| Numéros des points TN       | 1                  | 2                  | 3                  | 4                  | 5                   | 6                  | 7                  | 8                  | 9                   | 10     | 11     | 12     | 13     | 14     | 15     | 16     |
| Altitudes TN                | 356.12             | 357.23             | 354.90             | 356.44             | 356.44              | 359.75             | 359.75             | 358.92             | 358.92              | 355.98 | 355.98 | 355.98 | 359.38 | 359.45 | 359.45 | 356.24 |
| Distances partielles TN     |                    | 2.436              | 5.290              | 0.424              | 5.563               | 1.389              | 11.330             | 0.000              | 0.000               | 2.937  | 6.521  | 3.779  | 11.257 | 0.000  | 0.000  | 0.000  |
| Distances cumulées TN       | 0.000              | 2.436              | 7.726              | 8.150              | 13.713              | 15.304             | 26.634             | 26.634             | 27.571              | 30.508 | 37.400 | 41.180 | 52.437 | 52.437 | 52.437 | 52.437 |
| Altitudes Projet            |                    |                    |                    |                    |                     |                    |                    |                    |                     |        |        |        |        |        |        |        |
| Distances partielles Projet |                    |                    |                    |                    |                     |                    |                    |                    |                     |        |        |        |        |        |        |        |
| Distances cumulées Projet   |                    |                    |                    |                    |                     |                    |                    |                    |                     |        |        |        |        |        |        |        |
| Pentes et rampes            |                    |                    | 0.420              |                    | 0.186               |                    |                    | 0.634              | 0.269               | 0.405  |        |        |        |        |        | 0.314  |
| Alignements et courbes      | DROITE L = 2.436 m | DROITE L = 5.290 m | DROITE L = 5.563 m | DROITE L = 1.389 m | DROITE L = 11.330 m | DROITE L = 2.937 m | DROITE L = 6.521 m | DROITE L = 3.779 m | DROITE L = 11.257 m |        |        |        |        |        |        |        |

# Vue en plan

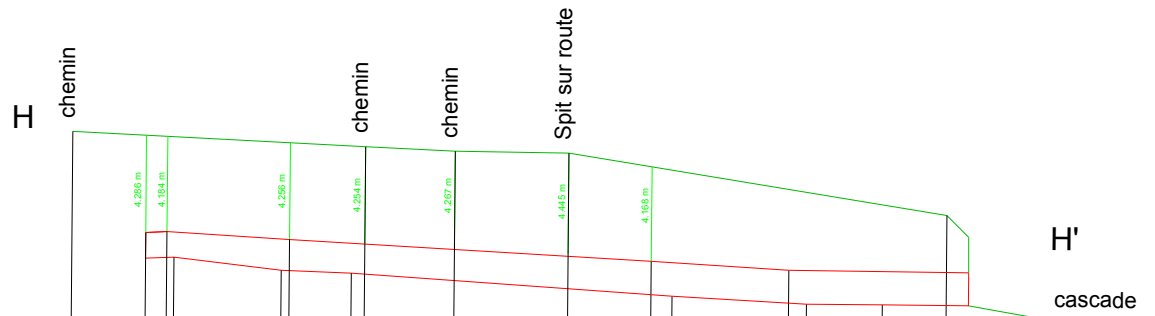
## Repérage coupe H-H'

### Echelle 1/1000



## Coupe H-H'

### Echelle 1/333



PC : 349.00 m

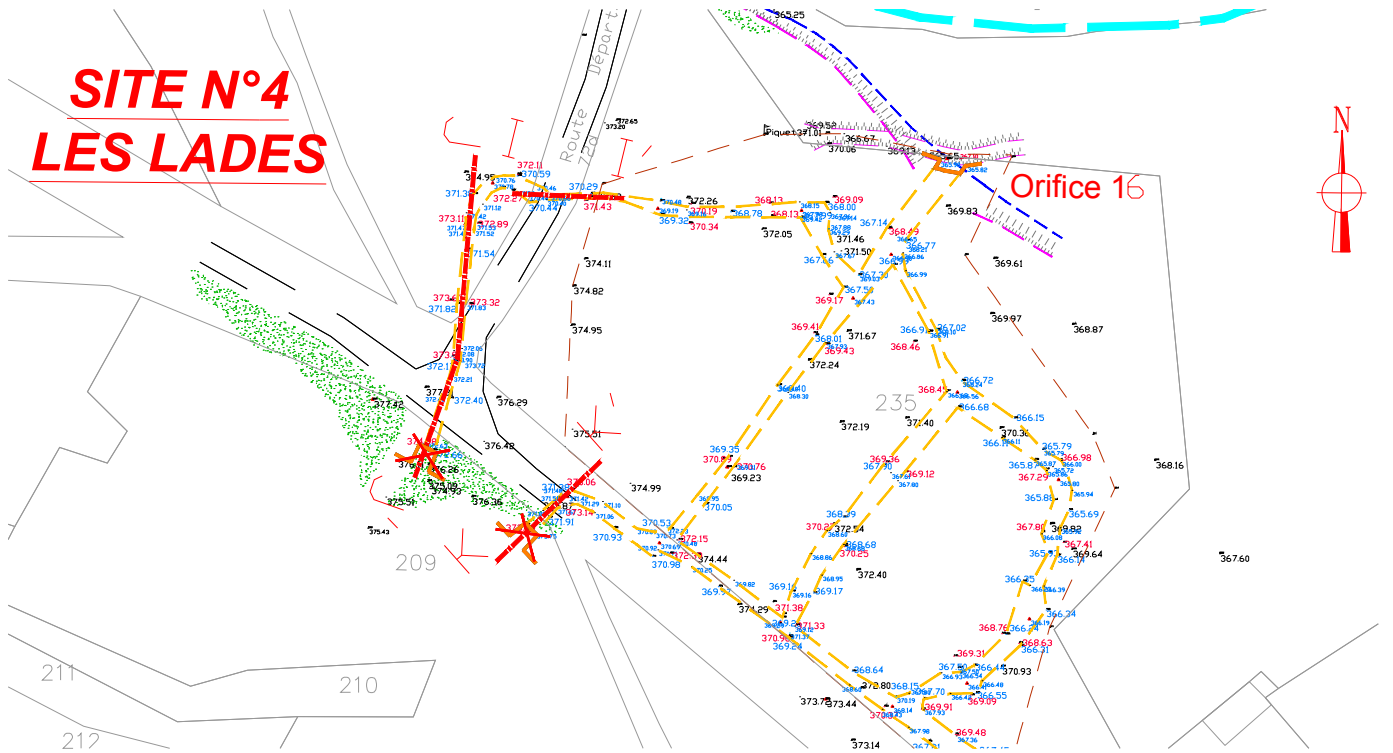
|                         |        |        |        |        |        |        |        |        |        |        |        |        |        |        |        |        |        |        |        |
|-------------------------|--------|--------|--------|--------|--------|--------|--------|--------|--------|--------|--------|--------|--------|--------|--------|--------|--------|--------|--------|
| Numéros des points TN   | 1      | 2      | 3      | 4      | 5      | 6      | 7      | 8      | 9      | 10     | 11     | 12     | 13     | 14     | 15     | 16     | 17     | 18     | 19     |
| Altitudes TN            | 373.22 | 368.79 | 369.95 | 369.95 | 368.54 | 368.54 | 367.08 | 372.65 | 372.49 | 372.45 | 367.71 | 366.19 | 368.63 | 367.38 | 365.89 | 368.31 | 365.88 | 369.95 | 365.25 |
| Distances partielles TN |        | 3.253  | 0.926  | 4.728  | 0.265  | 2.728  | 0.537  | 3.952  | 5.016  | 3.670  | 0.926  | 2.784  | 2.349  | 0.7705 | 1.644  | 1.702  | 2.808  | 4.676  |        |
| Distances cumulées TN   | 0.000  | 3.253  | 4.179  | 8.907  | 9.172  | 11.900 | 12.437 | 16.389 | 21.405 | 25.421 | 26.347 | 29.131 | 31.480 | 32.250 | 33.894 | 35.596 | 38.404 | 43.080 |        |

# Vue en plan

## Repérage coupe I-I'

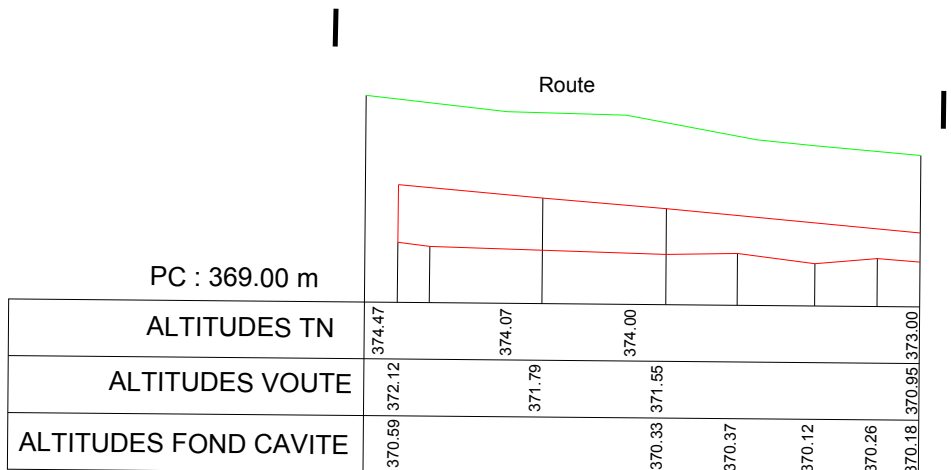
### Echelle 1/1000

**SITE N°4  
LES LADES**



## Coupe I-I'

### Echelle 1/200

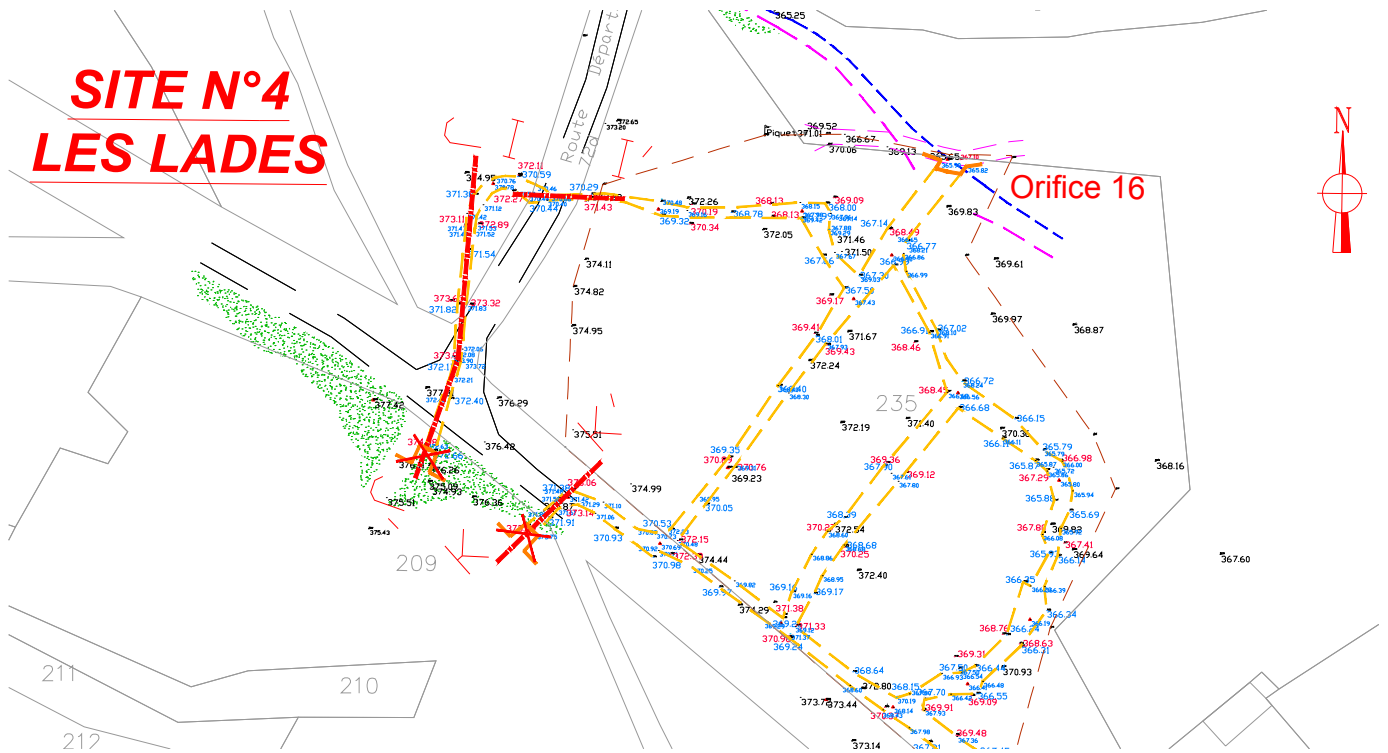




# Vue en plan

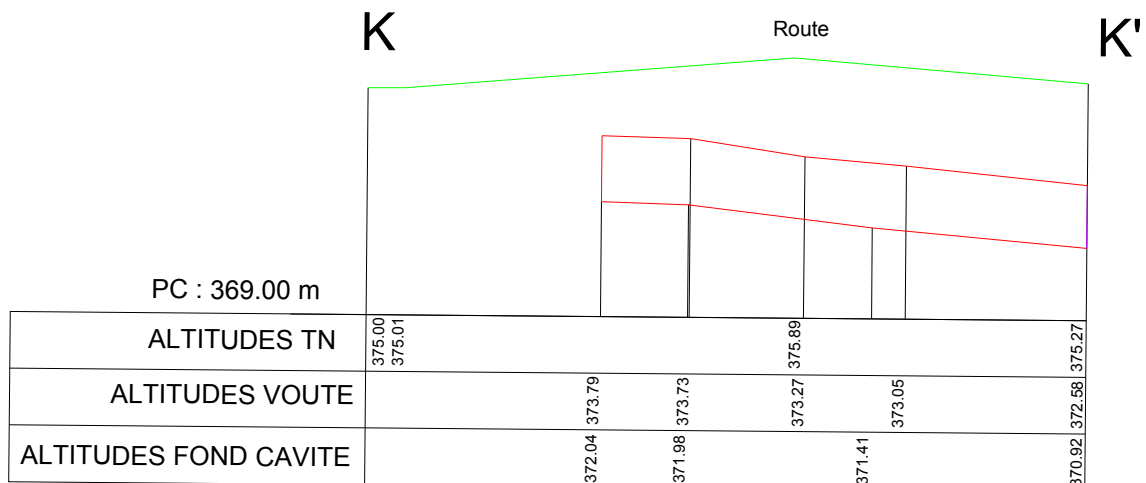
## Repérage coupe K-K'

### Echelle 1/1000

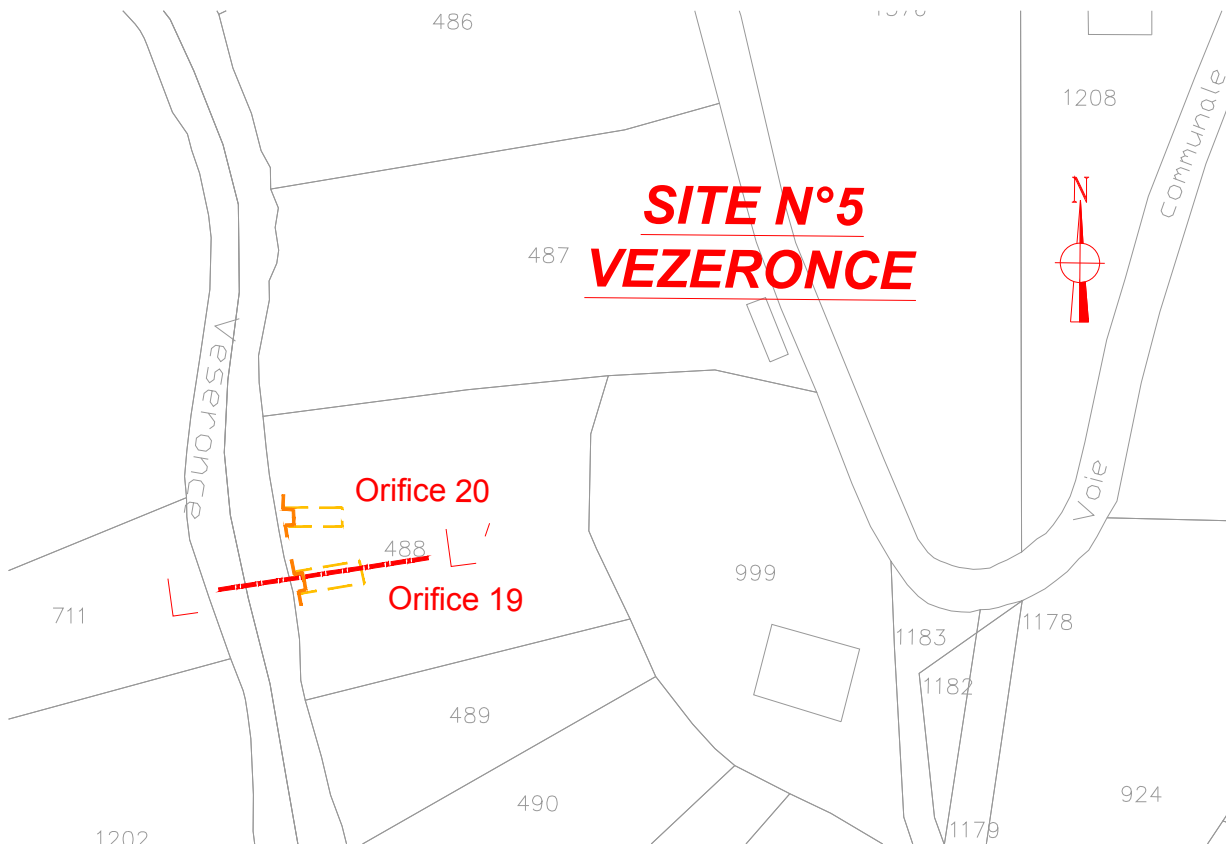


## Coupe K-K'

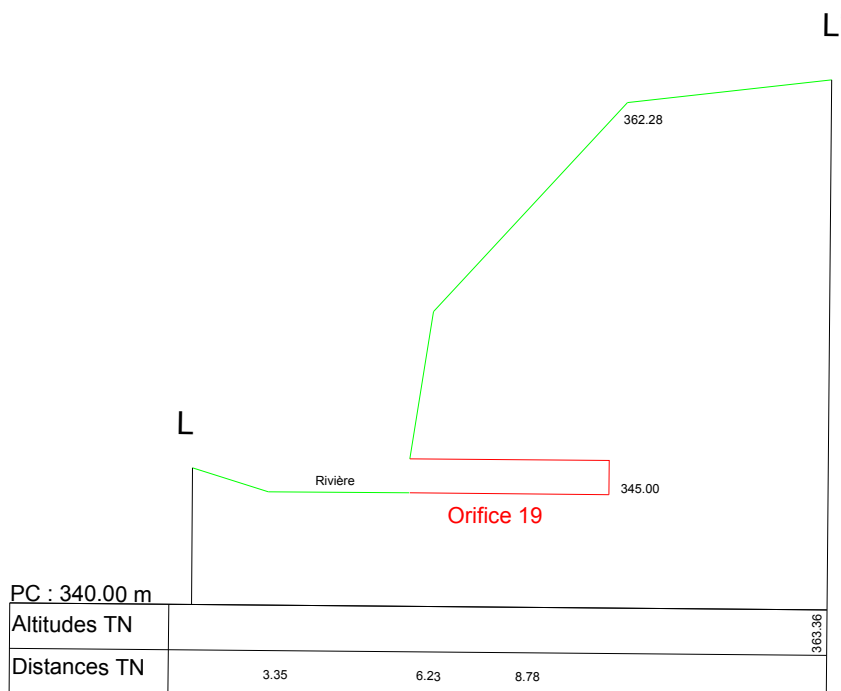
### Echelle 1/200



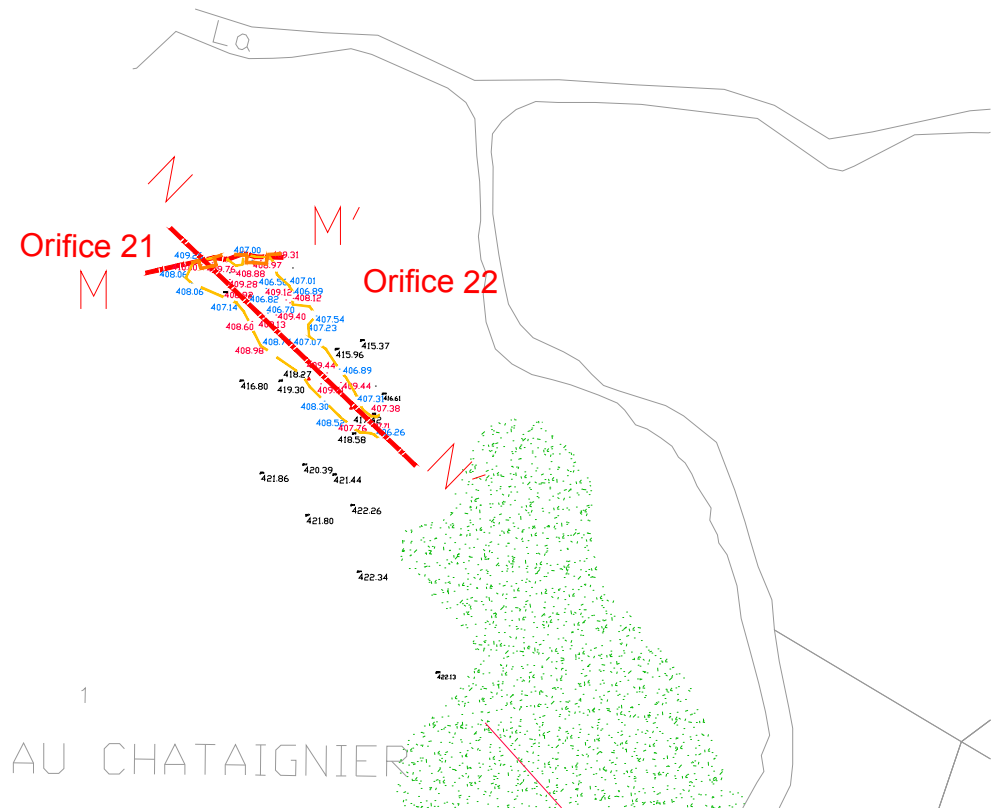
**Vue en plan**  
**Repérage coupe L-L'**  
 Echelle 1/1000



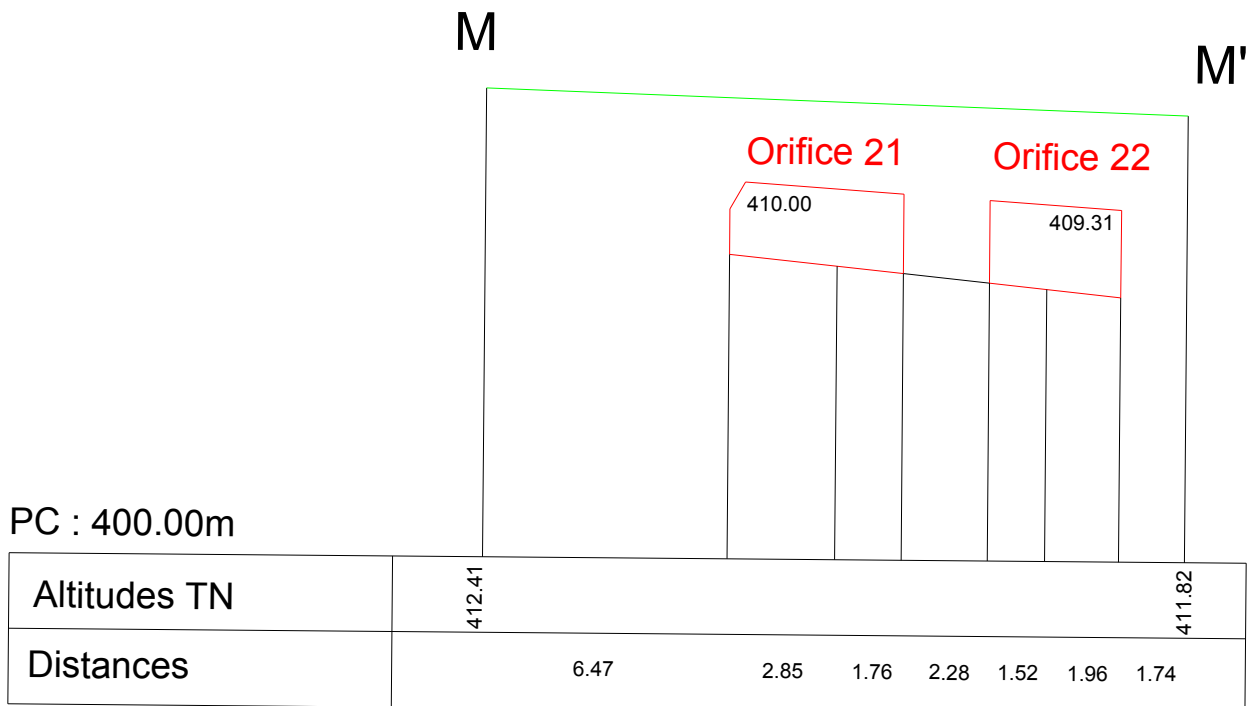
**Coupe L-L'**  
 Echelle 1/333



Vue en plan  
Repérage coupe M-M'  
Echelle 1/1000

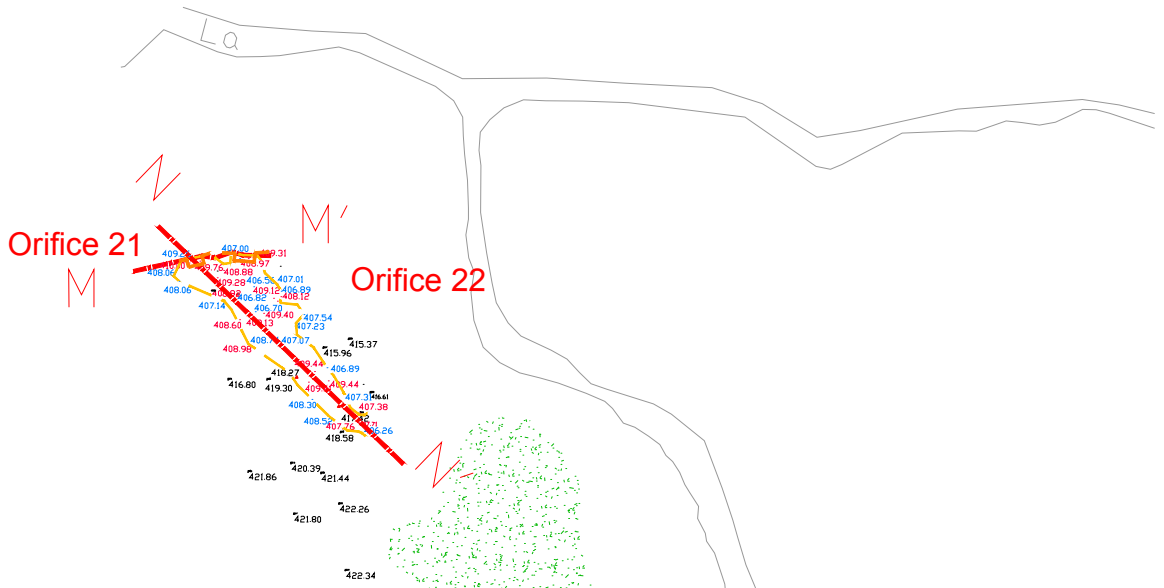


Coupe M-M'  
Echelle 1/200

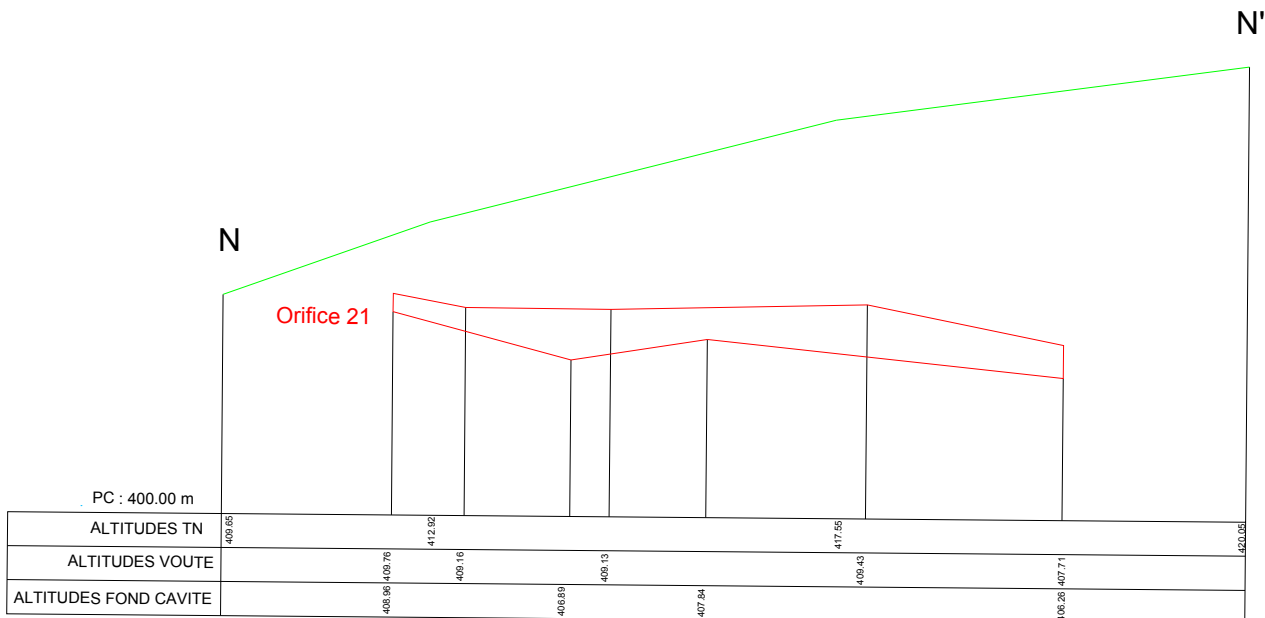


Vue en plan  
Repérage coupe N-N'  
Echelle 1/1000

**SITE N°6**  
**AU CHATAIGNIER**

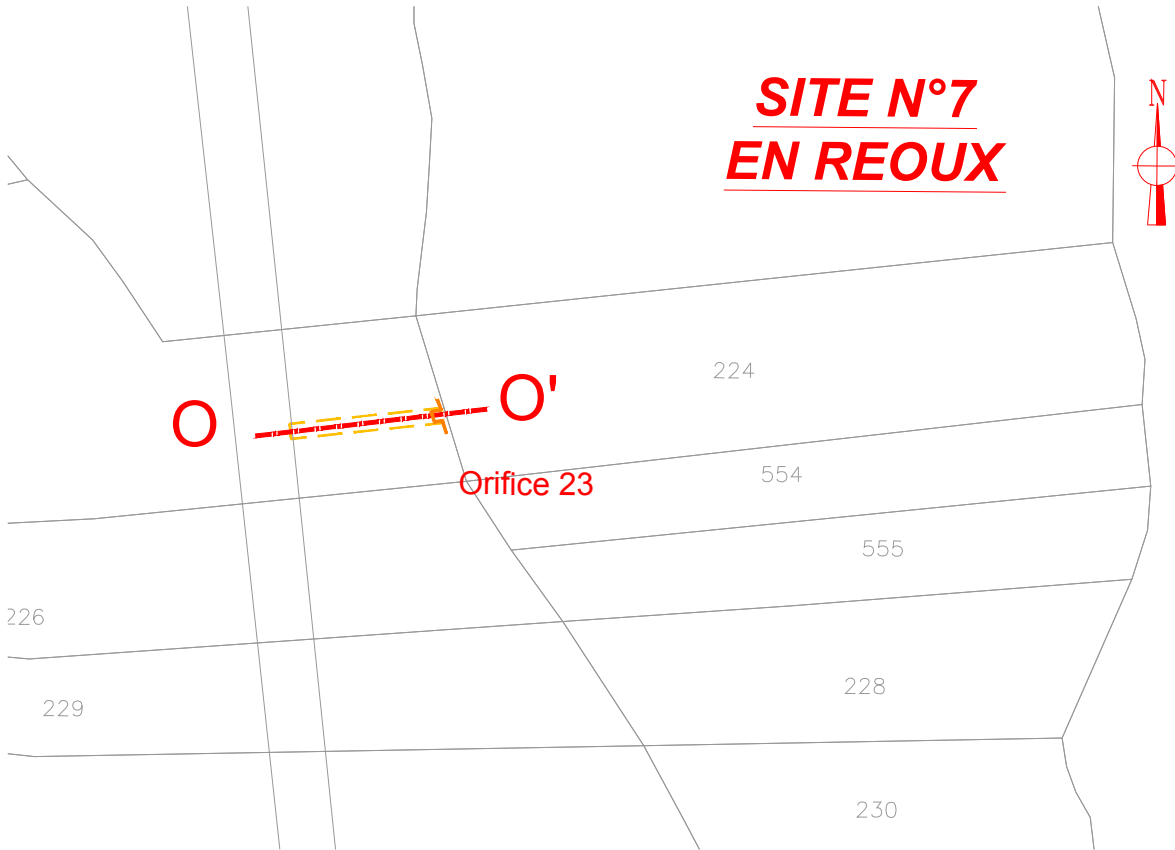


Coupe N-N'  
Echelle 1/333





Vue en plan  
Repérage coupe O-O'  
 Echelle 1/1000



Coupe O-O'  
 Echelle 1/333

