
ANNEXE 6

RESULTATS DE SIMULATION

Reach	River Sta	Profile	Q Total (m3/s)	Min Ch El (m)	W.S. Elev (m)	Crit W.S. (m)	E.G. Elev (m)	E.G. Slope (m/m)	Vel Chnl (m/s)	Flow Area (m2)	Top Width (m)	Froude # Chl
Reyssouze	828	Crue 1935	15.00	244.60	246.88	246.00	247.13	0.006409	2.18	6.88	3.12	0.47
Reyssouze	827	Crue 1935	15.00	242.90	245.49	245.49	245.81	0.026896	2.51	5.98	513.71	1.38
Reyssouze	826	Crue 1935	58.00	242.70	244.81	244.28	244.82	0.000193	0.29	261.26	420.35	0.10
Reyssouze	825	Crue 1935	58.00	242.82	244.51	244.39	244.70	0.006327	2.42	39.77	100.34	0.72
Reyssouze	824	Crue 1935	58.00	242.46	244.34	243.78	244.36	0.000857	0.93	137.18	247.53	0.26
Reyssouze	823	Crue 1935	58.00	241.71	244.30	243.31	244.30	0.000132	0.49	205.93	185.00	0.11
Reyssouze	822.6	Crue 1935	58.00	241.23	244.26	243.52	244.30	0.000708	1.02	82.67	174.02	0.24
Reyssouze	822.5	Culvert										
Reyssouze	822.4	Crue 1935	58.00	241.23	243.55	243.55	244.29	0.013246	3.81	15.22	10.34	1.00
Reyssouze	822	Crue 1935	58.00	240.87	243.56	243.29	243.64	0.001800	1.68	67.21	95.15	0.39
Reyssouze	821	Crue 1935	58.00	241.25	243.36	243.06	243.43	0.001832	1.59	68.47	97.95	0.40
Reyssouze	820	Crue 1935	58.00	240.91	242.91	242.56	242.94	0.000918	1.04	102.21	151.40	0.28
Reyssouze	819	Crue 1935	58.00	239.97	242.63	242.24	242.69	0.001321	1.44	67.87	83.75	0.35
Reyssouze	818	Crue 1935	58.00	239.83	242.49	241.97	242.52	0.000987	1.11	98.40	117.68	0.29
Reyssouze	817	Crue 1935	58.00	239.81	242.43	241.22	242.45	0.000587	0.96	148.77	242.62	0.20
Reyssouze	816.6	Crue 1935	58.00	240.05	242.10	242.10	242.35	0.005244	2.58	61.84	155.03	0.66
Reyssouze	816.5	Bridge										
Reyssouze	816.4	Crue 1935	58.00	240.05	241.92	241.96	242.13	0.005671	2.50	36.36	125.71	0.67
Reyssouze	816	Crue 1935	58.00	239.27	241.86	241.51	241.93	0.001553	1.59	71.49	102.94	0.36
Reyssouze	815	Crue 1935	58.00	239.58	241.79	241.36	241.81	0.000604	1.04	129.05	213.04	0.24
Reyssouze	814	Crue 1935	58.00	239.06	241.44	241.44	241.66	0.004190	2.40	45.09	102.90	0.59
Reyssouze	813	Crue 1935	58.00	237.39	241.01	239.64	241.08	0.000872	1.34	57.51	45.12	0.29
Reyssouze	812.75	Crue 1935	58.00	237.57	240.74	240.12	240.99	0.003021	2.46	30.68	18.98	0.45
Reyssouze	812.6	Crue 1935	58.00	237.60	239.98	239.80	240.88	0.008121	4.20	13.80	6.01	0.89
Reyssouze	812.5	Bridge										
Reyssouze	812.4	Crue 1935	58.00	237.60	239.78	239.80	240.87	0.011042	4.61	12.58	6.01	1.02
Reyssouze	812	Crue 1935	58.00	237.67	239.37	239.68	240.58	0.023439	4.87	11.91	8.69	1.33
Reyssouze	811	Crue 1935	58.00	237.04	239.45	239.04	239.74	0.003931	2.51	31.82	54.00	0.58
Reyssouze	810	Crue 1935	58.00	236.51	238.48	238.48	239.05	0.009565	3.37	18.47	24.20	0.90
Reyssouze	809	Crue 1935	58.00	234.96	236.99	236.99	237.01	0.001442	0.92	104.99	183.83	0.30
Reyssouze	808	Crue 1935	58.00	234.02	235.85	235.85	236.04	0.006762	2.49	43.44	96.80	0.74
Reyssouze	807	Crue 1935	62.00	233.05	235.75	234.83	235.76	0.000151	0.55	207.99	186.61	0.12
Reyssouze	806.6	Crue 1935	62.00	232.97	235.35	234.60	235.68	0.003464	2.58	24.53	10.91	0.55
Reyssouze	806.5	Bridge										
Reyssouze	806.4	Crue 1935	62.00	232.97	235.29	234.60	235.64	0.003758	2.64	23.88	10.91	0.57
Reyssouze	806	Crue 1935	62.00	232.65	234.81	234.80	235.34	0.010457	3.22	20.16	27.01	0.91
Reyssouze	805	Crue 1935	62.00	232.12	234.40	234.13	234.45	0.001493	1.41	87.79	157.11	0.36
Reyssouze	804	Crue 1935	62.00	232.32	234.26	234.10	234.27	0.000575	0.55	113.39	161.72	0.21
Reyssouze	803	Crue 1935	62.00	231.14	234.09	233.13	234.10	0.000312	0.74	158.26	186.72	0.17
Reyssouze	802	Crue 1935	62.00	231.24	233.87	233.18	233.92	0.000751	1.29	89.61	103.58	0.28
Reyssouze	801	Crue 1935	62.00	230.66	233.72	232.53	233.75	0.000361	0.92	108.08	74.20	0.19
Reyssouze	800.5	Crue 1935	62.00	230.69	233.70	232.58	233.72	0.000223	0.67	151.68	165.97	0.15
Reyssouze	800	Crue 1935	62.00	230.73	233.69	232.45	233.70	0.000171	0.65	184.46	150.11	0.13
Reyssouze	795	Bridge										
Reyssouze	790	Crue 1935	62.00	230.02	233.62	232.05	233.66	0.001114	1.03	177.95	195.40	0.20
Reyssouze	789	Crue 1935	62.00	229.60	233.05	231.44	233.18	0.004341	1.61	41.06	128.98	0.30
Reyssouze	788	Crue 1935	62.00	228.78	232.35	230.86	232.46	0.003933	1.53	46.24	134.47	0.29
Reyssouze	787	Crue 1935	62.00	228.58	232.13	230.77	232.13	0.000463	0.50	244.42	223.12	0.10
Reyssouze	786	Crue 1935	62.00	228.70	232.02	231.13	232.03	0.000546	0.82	185.99	151.58	0.15
Reyssouze	785	Crue 1935	62.00	228.40	231.99	230.76	232.00	0.000467	0.69	196.57	164.45	0.14
Reyssouze	784	Crue 1935	62.00	227.88	231.98	230.49	231.99	0.000025	0.18	224.69	159.82	0.03
Reyssouze	783	Crue 1935	62.00	227.69	231.97	230.15	231.98	0.000312	0.65	232.33	171.84	0.11
Reyssouze	782.6	Crue 1935	62.00	227.86	231.92	230.23	231.97	0.000569	0.92	67.42	40.06	0.23
Reyssouze	782.5	Bridge										
Reyssouze	782.4	Crue 1935	62.00	227.86	231.91	230.23	231.96	0.000580	0.93	66.94	40.06	0.23
Reyssouze	782	Crue 1935	62.00	228.29	231.90	230.52	231.92	0.000386	0.66	190.81	133.98	0.13
Reyssouze	781.5	Crue 1935	62.00	228.44	231.60	230.64	231.83	0.005971	2.10	29.48	37.34	0.47
Reyssouze	781	Bridge										
Reyssouze	780.5	Crue 1935	62.00	228.44	231.52	230.64	231.76	0.006749	2.20	28.22	36.83	0.50
Reyssouze	780	Crue 1935	62.00	228.81	231.29	230.54	231.37	0.001701	1.37	60.25	316.37	0.29
Reyssouze	779	Crue 1935	62.00	228.19	231.28	230.37	231.28	0.000121	0.58	278.06	213.45	0.12
Reyssouze	778	Crue 1935	62.00	227.61	231.18	229.87	231.24	0.000550	1.29	91.52	87.42	0.25
Reyssouze	777	Crue 1935	62.00	227.56	231.07	229.55	231.12	0.000491	1.24	110.06	101.92	0.23
Reyssouze	776	Crue 1935	62.00	227.81	230.78	229.59	230.91	0.001119	1.67	45.50	339.04	0.34
Reyssouze	775	Bridge										
Reyssouze	774	Crue 1935	62.00	228.02	230.31	230.11	230.40	0.001497	1.67	71.90	180.39	0.39
Reyssouze	773	Crue 1935	62.00	228.10	230.18	229.34	230.22	0.001204	1.27	91.20	173.16	0.31
Reyssouze	772	Crue 1935	62.00	227.29	230.20	228.23	230.21	0.000092	0.53	166.82	177.80	0.11
Reyssouze	771	Crue 1935	62.00	227.29	230.19	228.23	230.20	0.000093	0.53	165.14	175.53	0.11
Reyssouze	770.5	Bridge										
Reyssouze	770	Crue 1935	62.00	226.65	230.14	228.49	230.16	0.000245	0.87	143.99	157.95	0.16
Reyssouze	768	Crue 1935	62.00	226.62	230.12	228.09	230.13	0.000123	0.61	167.26	319.47	0.12
Reyssouze	767.5	Bridge										
Reyssouze	767	Crue 1935	62.00	226.89	230.11	228.44	230.12	0.000185	0.68	151.48	314.55	0.15
Reyssouze	766.5	Bridge										
Reyssouze	766	Crue 1935	75.00	226.37	230.10	228.16	230.11	0.000118	0.64	212.24	197.74	0.12
Reyssouze	765	Crue 1935	75.00	225.51	230.10	227.29	230.10	0.000024	0.32	529.84	376.18	0.05
Reyssouze	764	Crue 1935	75.00	226.25	230.10	228.13	230.10	0.000011	0.22	639.97	407.39	0.04
Reyssouze	763	Crue 1935	75.00	225.44	230.10	227.21	230.10	0.000014	0.25	611.90	320.82	0.04
Reyssouze	762	Crue 1935	75.00	225.42	230.10	227.15	230.10	0.000012	0.23	670.96	370.21	0.04
Reyssouze	761.5	Bridge										
Reyssouze	761	Crue 1935	75.00	225.28	229.55	226.87	229.57	0.000182	0.82	178.10	221.82	0.14
Reyssouze	760	Crue 1935	75.00	225.39	229.51	226.92	229.55	0.000298	1.03	112.11	149.91	0.17
Reyssouze	759	Crue 1935	38.00	225.86	229.51	227.25	229.53	0.000203	0.76	73.84	165.28	0.14
Reyssouze	479.6	Crue 1935	38.00	226.25	229.41	228.05	229.52	0.000923	1.69	44.55	46.92	0.30
Reyssouze	479.51	Crue 1935	38.00	226.25	229.41	228.05	229.51	0.000934	1.70	44.31	46.90	0.31
Reyssouze	479.5	Crue 1935	38.00	227.44	229.28	229.20	229.50	0.002975	2.57	32.66	46.34	0.60
Reyssouze	479.49	Crue 1935	38.00	227.44	229.20	229.20	229.49	0.003940	2.87	28.90	45.98	0.69
Reyssouze	479.4	Crue 1935	38.00	226.25	227.53	228.05	229.33	0.027678	5.95	6.39	5.00	1.68
Reyssouze	479.3	Crue 1935	38.00	226.25	227.65	228.05	229.15	0.021223	5.42	7.01	5.00	1.46
Reyssouze	479	Crue 1935	38.00	225.32	228.71	226.99	228.73	0.000374	0.68	82.07	165.49	0.18
Reyssouze	478	Crue 1935	38.00	225.30	228.69	226.60	228.71	0.000215	0.74	100.12	170.47	0.15
Reyssouze	477	Crue 1935	38.00									

Reach	River Sta	Profile	Q Total (m3/s)	Min Ch El (m)	W.S. Elev (m)	Crit W.S. (m)	E.G. Elev (m)	E.G. Slope (m/m)	Vel Chnl (m/s)	Flow Area (m2)	Top Width (m)	Froude # Chl
Reyssouze	470	Crue 1935	38.00	225.28	228.33	226.69	228.34	0.000132	0.48	131.31	125.67	0.11
Reyssouze	466	Crue 1935	38.00	225.40	228.25	226.87	228.31	0.000816	1.10	34.48	20.50	0.27
Reyssouze	465.5	Bridge										
Reyssouze	465	Crue 1935	38.00	225.40	228.16	226.88	228.23	0.000943	1.16	32.66	19.95	0.29
Reyssouze	463	Crue 1935	38.00	225.66	227.96	227.16	228.10	0.002233	1.69	22.43	14.88	0.44
Reyssouze	462.5	Bridge										
Reyssouze	462	Crue 1935	38.00	225.66	227.64	227.16	227.87	0.004119	2.12	17.94	13.50	0.59
Reyssouze	454	Crue 1935	38.00	224.94	227.64	225.93	227.65	0.000111	0.40	97.86	337.20	0.10
Reyssouze	453	Crue 1935	38.00	224.93	227.61	225.90	227.64	0.000210	0.67	57.55	144.91	0.15
Reyssouze	451	Crue 1935	18.00	224.70	227.59	226.20	227.62	0.000529	0.80	22.42	11.87	0.19
Reyssouze	450.5	Bridge										
Reyssouze	450	Crue 1935	18.00	224.62	227.26	225.42	227.29	0.000544	0.82	22.07	8.47	0.16
Reyssouze	449	Crue 1935	22.00	224.78	227.16	226.17	227.26	0.001594	1.48	18.49	22.81	0.35
Reyssouze	438	Crue 1935	22.00	225.07	227.16	225.93	227.21	0.000591	1.01	28.63	25.03	0.22
Reyssouze	437.5	Bridge										
Reyssouze	437	Crue 1935	22.00	225.07	227.14	225.93	227.18	0.000625	1.03	27.96	25.03	0.23
Reyssouze	435	Crue 1935	22.00	224.44	227.13	225.61	227.17	0.000311	0.91	35.14	27.04	0.19
Reyssouze	434.5	Bridge										
Reyssouze	434	Crue 1935	22.00	224.44	227.12	225.61	227.16	0.000315	0.91	34.95	27.04	0.19
Reyssouze	432	Crue 1935	22.00	224.50	227.10	225.49	227.12	0.000362	0.78	40.44	31.65	0.16
Reyssouze	431.5	Bridge										
Reyssouze	431	Crue 1935	22.00	224.50	227.09	225.49	227.12	0.000366	0.78	40.29	31.65	0.16
Reyssouze	429	Crue 1935	21.00	224.38	227.05	225.40	227.09	0.000334	0.79	26.68	29.70	0.17
Reyssouze	428.5	Bridge										
Reyssouze	428	Crue 1935	21.00	223.73	226.43	224.74	226.47	0.000277	0.83	26.73	36.58	0.17
Reyssouze	426	Crue 1935	14.00	223.97	226.42	224.73	226.44	0.000301	0.60	23.33	13.25	0.13
Reyssouze	425.5	Bridge										
Reyssouze	425	Crue 1935	14.00	223.97	226.29	224.73	226.31	0.000356	0.64	21.85	10.25	0.14
Reyssouze	423	Crue 1935	14.00	223.87	226.30	224.59	226.31	0.000141	0.47	46.20	42.57	0.10
Reyssouze	422.5	Bridge										
Reyssouze	422	Crue 1935	14.00	223.87	226.30	224.59	226.31	0.000142	0.47	46.15	42.57	0.10
Reyssouze	421	Crue 1935	14.00	223.82	226.30	224.53	226.30	0.000057	0.38	48.40	38.62	0.08
Reyssouze	420.5	Bridge										
Reyssouze	420	Crue 1935	8.00	223.82	226.30	224.35	226.30	0.000019	0.22	48.33	38.62	0.05
Reyssouze	416	Crue 1935	7.00	223.46	226.30	223.93	226.30	0.000014	0.13	54.40	33.71	0.03
Reyssouze	415.5	Bridge										
Reyssouze	415	Crue 1935	7.00	223.46	226.29	223.93	226.30	0.000014	0.13	54.39	33.71	0.03
Reyssouze	411	Crue 1935	0.00	223.33	226.30	223.35	226.30	0.000000	0.00	53.29	32.23	0.00
Reyssouze	410.5	Bridge										
Reyssouze	410	Crue 1935	0.00	223.33	226.30	223.35	226.30	0.000000	0.00	53.29	32.23	0.00
Reyssouze	406	Crue 1935	0.00	223.45	226.30	223.29	226.30	0.000000	0.00	81.79	76.54	0.00
Reyssouze	405.5	Bridge										
Reyssouze	405	Crue 1935	0.00	223.45	226.30	223.47	226.30	0.000000	0.00	60.78	76.54	0.00
Reyssouze	306	Crue 1935	62.00	223.14	226.09	224.81	226.22	0.001283	1.60	49.29	67.75	0.35
Reyssouze	305.5	Bridge										
Reyssouze	305	Crue 1935	60.00	223.14	225.91	224.78	226.07	0.001766	1.78	36.54	45.32	0.40
Reyssouze	301.6	Crue 1935	60.00	222.82	225.67	224.58	225.80	0.001274	1.57	38.73	21.54	0.35
Reyssouze	301.5	Bridge										
Reyssouze	301.4	Crue 1935	60.00	222.82	225.67	224.57	225.79	0.001287	1.57	38.60	21.51	0.35
Reyssouze	301	Crue 1935	21.00	223.22	225.71	224.16	225.74	0.000309	0.74	39.52	61.14	0.17
Reyssouze	300	Bridge										
Reyssouze	299	Crue 1935	21.00	223.22	225.71	224.16	225.73	0.000314	0.74	39.14	60.43	0.17
Reyssouze	197	Crue 1935	21.00	223.08	225.64	224.19	225.68	0.000524	0.89	23.70	16.02	0.22
Reyssouze	196.5	Bridge										
Reyssouze	196	Crue 1935	21.00	223.08	225.47	224.19	225.52	0.000702	0.99	21.23	12.95	0.25
Reyssouze	195	Crue 1935	21.00	223.27	225.38	224.58	225.46	0.001881	1.33	25.38	283.71	0.37
Reyssouze	194	Crue 1935	21.00	223.03	225.32	224.41	225.35	0.000999	1.03	42.99	34.96	0.22
Reyssouze	193.8	Crue 1935	21.00	223.14	225.30	224.63	225.35	0.000803	1.34	41.25	34.95	0.29
Reyssouze	193.79	Crue 1935	21.00	223.98	225.29	224.77	225.35	0.001471	1.58	37.78	34.95	0.44
Reyssouze	193.78	Crue 1935	21.00	223.98	225.29	224.77	225.35	0.001471	1.58	37.78	34.95	0.44
Reyssouze	193.77	Crue 1935	21.00	223.14	225.29	224.64	225.35	0.000805	1.34	41.22	34.95	0.29
Reyssouze	193.6	Crue 1935	21.00	223.17	225.30	224.39	225.33	0.000537	0.92	31.26	36.00	0.21
Reyssouze	193.5	Bridge										
Reyssouze	193.4	Crue 1935	21.00	222.46	225.26	223.79	225.31	0.000387	1.11	32.27	40.68	0.21
Reyssouze	191	Crue 1935	21.00	222.65	225.19	223.88	225.29	0.000801	1.48	18.78	12.16	0.30
Reyssouze	190.5	Bridge										
Reyssouze	190	Crue 1935	21.00	222.65	224.51	223.88	224.74	0.002676	2.20	10.70	6.78	0.52
Reyssouze	188	Crue 1935	21.00	222.13	224.55	223.06	224.58	0.000382	0.79	31.54	19.10	0.17
Reyssouze	187	Crue 1935	21.00	221.93	224.53	223.04	224.55	0.000294	0.69	57.65	155.47	0.16
Reyssouze	186	Crue 1935	21.00	221.38	224.42	222.99	224.51	0.001115	1.33	15.77	6.42	0.27
Reyssouze	185.5	Bridge										
Reyssouze	185	Crue 1935	21.00	221.38	224.26	222.99	224.37	0.001368	1.43	14.73	6.42	0.30
Reyssouze	181	Crue 1935	45.00	221.73	224.22	223.19	224.26	0.000640	0.93	62.65	62.50	0.23
Reyssouze	180.5	Bridge										
Reyssouze	180	Crue 1935	45.00	221.73	224.14	223.19	224.19	0.000771	1.16	55.07	62.30	0.25
Reyssouze	176	Crue 1935	39.00	220.68	223.87	222.39	224.05	0.001394	1.85	21.18	7.99	0.36
Reyssouze	175.5	Bridge										
Reyssouze	175	Crue 1935	39.00	220.68	223.55	222.39	223.78	0.002108	2.09	18.67	7.70	0.43
Reyssouze	171	Crue 1935	39.00	221.06	223.63	222.29	223.69	0.000709	1.10	40.57	53.69	0.26
Reyssouze	170.5	Bridge										
Reyssouze	170	Crue 1935	39.00	221.06	223.50	222.28	223.57	0.000946	1.21	32.77	24.52	0.30
Reyssouze	165.6	Crue 1935	39.00	220.34	223.44	221.68	223.50	0.000397	1.09	40.26	19.78	0.21
Reyssouze	165.5	Bridge										
Reyssouze	165.4	Crue 1935	39.00	220.34	223.40	221.68	223.46	0.000418	1.10	39.36	19.53	0.21
Reyssouze	161	Crue 1935	39.00	220.34	223.38	221.50	223.43	0.000424	1.03	39.67	16.86	0.20
Reyssouze	160.5	Bridge										
Reyssouze	160	Crue 1935	39.00	220.34	223.37	221.50	223.42	0.000430	1.04	39.49	16.84	0.20
Reyssouze	155.6	Crue 1935	39.00	220.44	223.15	221.95	223.38	0.001475	2.11	18.45	6.90	0.41
Reyssouze	155.5	Bridge										
Reyssouze	155.4	Crue 1935	39.00	220.44	223.10	221.95	223.33	0.001580	2.16	18.08	6.90	0.43
Reyssouze	155.3	Crue 1935	39.00	220.30	223.18	221.86	223.30	0.001182	1.51	25.89	11.93	0.32
Reyssouze	155.2	Bridge										
Reyssouze	155.1	Crue 1935	39.00	220.30	223.11	221.86	223.23	0.001322	1.56	25.01	11.57	0.34
Reyssouze	150.6	Crue 1935	45.00	219.98	223.09	221.60	223.17	0.000850	1.30	35.18	20.79	0.29
Reyssouze	150.5	Bridge										
Reyssouze	150.4	Crue 1935	45.00	219.98	222.62	221.60	222.76	0.001768	1.67	26.97	15.23	0.40
Reyssouze	146	Crue 1935	45.00	219.16	222.00	220.84	222.17	0.001352	1.89	25.89	11.77	0.38
Reyssouze	145.5	Bridge										
Reyssouze	145	Crue 1935	45.00	219.16	221.89	220.84	222.09	0.001585	1.99	24.68	11.66	0.41

Reach	River Sta	Profile	Q Total (m3/s)	Min Ch El (m)	W.S. Elev (m)	Crit W.S. (m)	E.G. Elev (m)	E.G. Slope (m/m)	Vel Chnl (m/s)	Flow Area (m2)	Top Width (m)	Froude # Chl
Reyssouze	137	Crue 1935	45.00	218.95	221.68	220.44	221.75	0.000725	1.25	55.13	62.42	0.27
Reyssouze	136	Crue 1935	45.00	219.04	221.41	220.28	221.53	0.001256	1.48	30.66	17.44	0.34
Reyssouze	135	Crue 1935	42.00	218.83	221.17	220.10	221.28	0.001358	1.50	30.64	45.31	0.35
Reyssouze	134.5	Crue 1935	39.00	218.61	220.95	220.13	221.14	0.002567	1.94	21.10	21.66	0.47
Reyssouze	134.4	Crue 1935	39.00	218.20	220.93	219.35	221.02	0.000551	1.39	43.13	98.25	0.27
Reyssouze	134.3	Crue 1935	30.00	218.20	220.95	219.17	221.01	0.000311	1.05	45.88	99.59	0.20
Reyssouze	134	Crue 1935	30.00	218.58	220.92	219.60	220.96	0.000576	0.96	31.17	233.88	0.23
Reyssouze	133	Crue 1935	30.00	218.83	220.58	219.93	220.72	0.002409	1.63	18.36	13.64	0.45
Reyssouze	132.6	Crue 1935	30.00	217.93	219.49	218.99	219.69	0.003704	1.96	15.33	11.39	0.54
Reyssouze	132.5	Bridge										
Reyssouze	132.4	Crue 1935	30.00	217.93	219.38	218.99	219.61	0.004791	2.13	14.06	11.21	0.61
Reyssouze	132	Crue 1935	69.00	216.62	219.42	218.39	219.47	0.000832	1.20	99.20	133.59	0.27
Reyssouze	131	Crue 1935	69.00	216.74	219.35	218.62	219.37	0.000645	0.91	140.52	208.73	0.24
Reyssouze	130	Crue 1935	84.00	216.93	219.28	218.83	219.30	0.000438	0.89	188.21	217.91	0.20
Reyssouze	129.6	Crue 1935	84.00	217.25	219.18	218.76	219.27	0.001566	1.54	68.52	66.69	0.38
Reyssouze	129.4	Crue 1935	84.00	217.25	219.15	218.76	219.24	0.001756	1.61	66.00	66.69	0.40
Reyssouze	129.3	Crue 1935	84.00	217.20	218.96	218.85	219.17	0.003314	2.21	47.78	79.75	0.55
Reyssouze	129.2	Bridge										
Reyssouze	129.1	Crue 1935	84.00	217.20	218.85	218.85	219.15	0.005038	2.60	39.31	71.07	0.68
Reyssouze	129	Crue 1935	84.00	216.93	218.96	218.60	218.99	0.000934	1.04	148.68	233.20	0.29
Reyssouze	128	Crue 1935	52.00	216.48	218.73	217.87	218.81	0.001226	1.42	56.78	331.88	0.34
Reyssouze	127	Crue 1935	52.00	216.53	218.55	217.71	218.64	0.001536	1.42	52.20	72.77	0.36
Reyssouze	126	Crue 1935	52.00	216.09	217.75	217.50	218.11	0.006652	2.67	19.49	14.98	0.75
Reyssouze	125	Crue 1935	52.00	215.97	217.74	217.40	217.75	0.000483	0.70	143.13	235.14	0.20
Reyssouze	124	Crue 1935	52.00	215.06	217.62	216.75	217.64	0.000375	0.78	116.03	132.17	0.19
Reyssouze	123.6	Crue 1935	52.00	214.83	217.52	216.75	217.61	0.001780	1.60	47.05	106.21	0.36
Reyssouze	123.5	Bridge										
Reyssouze	123.4	Crue 1935	52.00	214.83	216.74	216.74	217.49	0.015182	3.84	13.53	9.10	1.01
Reyssouze	123	Crue 1935	52.00	214.28	216.53	215.72	216.72	0.002675	1.89	27.47	17.59	0.48
Reyssouze	122	Crue 1935	52.00	214.28	216.05	215.71	216.39	0.005930	2.61	19.96	14.36	0.71
Reyssouze	121	Crue 1935	52.00	213.68	215.61	215.31	215.64	0.000978	1.09	103.50	250.45	0.29
Reyssouze	120	Crue 1935	84.00	213.35	215.52	214.67	215.52	0.000178	0.53	344.55	455.34	0.13
Reyssouze	119.6	Crue 1935	84.00	212.44	215.46	215.38	215.50	0.000833	1.27	151.39	633.65	0.26
Reyssouze	119.5	Bridge										
Reyssouze	119.4	Crue 1935	84.00	212.44	215.38	215.38	215.47	0.001647	1.75	106.01	535.03	0.37
Reyssouze	119	Crue 1935	84.00	212.75	214.55	214.35	214.58	0.000983	1.10	198.09	486.64	0.29
Reyssouze	118	Crue 1935	106.00	211.96	214.25	214.02	214.28	0.001067	1.10	226.35	572.00	0.30
Reyssouze	117	Crue 1935	106.00	211.80	214.10	213.57	214.11	0.000406	0.70	280.42	367.77	0.19
Reyssouze	116	Crue 1935	106.00	211.57	213.77	213.64	213.88	0.002818	1.85	105.37	449.50	0.50
Reyssouze	115	Crue 1935	106.00	211.05	213.69	213.24	213.70	0.000197	0.57	389.36	459.47	0.13
Reyssouze	114.6	Crue 1935	106.00	211.02	213.22	212.75	213.58	0.004633	2.68	40.54	67.72	0.66
Reyssouze	114.5	Bridge										
Reyssouze	114.4	Crue 1935	106.00	211.02	212.53	212.75	213.50	0.019952	4.37	24.28	20.80	1.29
Reyssouze	114	Crue 1935	106.00	210.59	213.16	212.83	213.18	0.000620	1.07	243.04	376.27	0.24
Reyssouze	113	Crue 1935	106.00	210.52	212.71	212.45	212.86	0.002499	2.12	85.39	108.25	0.48
Reyssouze	112	Crue 1935	106.00	210.05	212.46	212.00	212.49	0.000762	1.10	162.37	159.32	0.27
Reyssouze	111.6	Crue 1935	106.00	210.04	212.17	211.59	212.40	0.003511	2.12	49.96	32.84	0.57
Reyssouze	111.5	Bridge										
Reyssouze	111.4	Crue 1935	106.00	210.04	211.94	211.59	212.25	0.005552	2.48	42.40	31.20	0.70
Reyssouze	111	Crue 1935	106.00	209.93	211.99	211.78	212.01	0.000638	0.92	225.81	336.63	0.24
Reyssouze	110	Crue 1935	106.00	209.19	211.66	211.38	211.71	0.001227	1.40	173.27	387.43	0.34
Reyssouze	109	Crue 1935	106.00	208.66	210.90	210.72	210.93	0.001317	1.17	204.93	513.41	0.34
Reyssouze	108.6	Crue 1935	106.00	208.72	210.62	210.44	210.69	0.001547	1.42	105.22	252.96	0.36
Reyssouze	108.5	Bridge										
Reyssouze	108.4	Crue 1935	106.00	208.72	210.55	210.45	210.65	0.002222	1.66	89.77	205.90	0.43
Reyssouze	108	Crue 1935	106.00	208.60	210.32	210.28	210.58	0.006620	2.47	71.48	222.50	0.74
Reyssouze	107	Crue 1935	106.00	208.43	210.22	209.93	210.24	0.001309	0.94	195.45	377.12	0.32
Reyssouze	106	Crue 1935	106.00	208.10	209.74	209.29	209.76	0.000924	1.03	194.43	280.71	0.28
Reyssouze	105.6	Crue 1935	106.00	206.57	209.43	208.81	209.61	0.003156	1.93	56.63	39.10	0.42
Reyssouze	105.5	Bridge										
Reyssouze	105.4	Crue 1935	106.00	206.57	209.30	208.81	209.52	0.004106	2.16	51.59	38.34	0.48
Reyssouze	105	Crue 1935	106.00	207.12	209.40	208.77	209.41	0.000268	0.70	351.30	546.29	0.16
Reyssouze	104	Crue 1935	106.00	206.52	209.36	208.82	209.37	0.000281	0.80	356.93	569.78	0.17
Reyssouze	103.8	Crue 1935	106.00	206.61	209.11	208.47	209.32	0.002502	2.14	54.14	37.89	0.49
Reyssouze	103.7	Bridge										
Reyssouze	103.6	Crue 1935	106.00	206.61	208.13	208.47	209.21	0.024342	4.67	23.14	21.90	1.40
Reyssouze	103.5	Crue 1935	106.00	206.60	208.75	208.72	208.87	0.002218	1.90	129.14	370.72	0.46
Reyssouze	103	Crue 1935	106.00	206.45	208.36	208.31	208.44	0.002174	1.77	161.65	496.52	0.45
Reyssouze	102	Crue 1935	106.00	206.05	208.15	207.72	208.15	0.000293	0.68	339.98	713.24	0.16
Reyssouze	101.6	Crue 1935	106.00	205.54	207.94	207.36	207.99	0.000515	1.35	172.96	483.78	0.30
Reyssouze	101.5	Bridge										
Reyssouze	101.4	Crue 1935	106.00	205.54	207.71	207.36	207.96	0.002010	2.51	79.33	318.21	0.59
Reyssouze	101	Crue 1935	106.00	205.34	206.99	206.99	207.15	0.005000	2.28	101.84	480.60	0.65
Reyssouze	100	Crue 1935	116.00	204.68	206.64	206.10	206.65	0.000246	0.51	421.64	623.36	0.14
Reyssouze	99.6	Crue 1935	116.00	204.42	206.47	205.80	206.54	0.003271	1.93	180.17	632.56	0.46
Reyssouze	99.5	Bridge										
Reyssouze	99.4	Crue 1935	116.00	204.42	205.64	205.82	206.44	0.038607	4.67	30.24	33.18	1.56
Reyssouze	99	Crue 1935	116.00	203.40	205.69	205.39	205.71	0.000957	1.06	268.52	678.57	0.29
Reyssouze	98	Crue 1935	116.00	203.18	204.89	204.82	204.96	0.004075	1.76	142.40	474.54	0.57
Reyssouze	97	Crue 1935	116.00	202.48	204.33	204.09	204.34	0.000685	0.97	334.10	784.94	0.25
Reyssouze	96	Crue 1935	116.00	202.00	204.04	203.78	204.05	0.000553	0.85	346.58	706.58	0.22
Reyssouze	95	Crue 1935	116.00	201.58	203.72	203.50	203.75	0.000931	1.13	267.45	601.04	0.29
Reyssouze	94.6	Crue 1935	116.00	201.42	203.42	203.28	203.48	0.000802	1.53	157.92	530.99	0.38
Reyssouze	94.5	Bridge										
Reyssouze	94.4	Crue 1935	116.00	201.42	203.19	203.26	203.46	0.002868	2.67	72.25	273.02	0.70
Reyssouze	94	Crue 1935	116.00	200.76	202.80	202.69	202.85	0.001703	1.55	195.50	474.69	0.39
Reyssouze	93	Crue 1935	116.00	200.31	202.12	202.04	202.18	0.002536	1.72	183.57	692.59	0.46
Reyssouze	92	Crue 1935	116.00	199.98	201.91	201.54	201.92	0.000463	0.78	370.24	966.29	0.20
Reyssouze	91.6	Crue 1935	116.00	198.77	201.54	201.42	201.58	0.001627	1.53	160.07	626.18	0.32
Reyssouze	91.5	Bridge										
Reyssouze	91.4	Crue 1935	116.00	198.77	201.42	201.42	201.54	0.003954	2.35	103.36	502.67	0.50
Reyssouze	91	Crue 1935	116.00	199.15	201.00	200.77	201.03	0.001160	1.22	216.39	554.43	0.32
Reyssouze	90	Crue 1935	116.0									

Reach	River Sta	Profile	Q Total (m3/s)	Min Ch El (m)	W.S. Elev (m)	Crit W.S. (m)	E.G. Elev (m)	E.G. Slope (m/m)	Vel Chnl (m/s)	Flow Area (m2)	Top Width (m)	Froude # Chl
Reyssouze	86	Crue 1935	116.00	196.58	199.56	198.80	199.58	0.000413	0.96	313.22	495.26	0.20
Reyssouze	85.6	Crue 1935	116.00	197.24	199.19	198.45	199.38	0.002160	2.15	62.06	34.69	0.51
Reyssouze	85.5	Bridge										
Reyssouze	85.4	Crue 1935	116.00	197.24	199.07	198.44	199.28	0.002634	2.30	57.79	34.69	0.56
Reyssouze	85	Crue 1935	116.00	196.31	199.09	198.65	199.16	0.000995	1.54	256.99	353.35	0.32
Reyssouze	84	Crue 1935	116.00	196.52	198.81	198.31	198.86	0.001088	1.45	225.59	311.83	0.33
Reyssouze	83	Crue 1935	116.00	196.19	198.75	198.15	198.80	0.000918	1.41	280.96	440.53	0.30
Reyssouze	82	Crue 1935	116.00	195.92	198.47	198.29	198.54	0.001497	1.63	172.48	374.10	0.37
Reyssouze	81	Crue 1935	116.00	195.91	198.36	198.14	198.40	0.001084	1.26	212.91	409.12	0.31
Reyssouze	80	Crue 1935	116.00	196.04	198.09	197.68	198.10	0.000445	0.63	394.23	983.17	0.19
Reyssouze	79	Crue 1935	116.00	194.83	197.34	197.16	197.44	0.002072	1.90	156.45	420.31	0.43
Reyssouze	78	Crue 1935	116.00	194.43	196.99	196.63	197.02	0.000794	1.13	258.95	587.07	0.27
Reyssouze	77	Crue 1935	116.00	194.31	196.52	196.35	196.58	0.001954	1.67	193.34	632.24	0.42
Reyssouze	76.6	Crue 1935	116.00	194.99	196.37	196.00	196.39	0.000453	0.90	182.98	937.86	0.25
Reyssouze	76.5	Bridge										
Reyssouze	76.4	Crue 1935	116.00	194.99	196.31	196.10	196.38	0.001505	1.60	104.47	937.34	0.46
Reyssouze	76	Crue 1935	116.00	194.19	196.13	195.81	196.14	0.000904	0.93	349.90	1094.63	0.26
Reyssouze	75	Crue 1935	116.00	193.45	195.38	195.34	195.45	0.004290	2.13	158.10	686.43	0.57
Reyssouze	74.6	Crue 1935	116.00	193.32	195.14	195.01	195.18	0.001240	1.47	155.73	554.26	0.43
Reyssouze	74.5	Bridge										
Reyssouze	74.4	Crue 1935	116.00	193.32	195.10	195.02	195.16	0.001707	1.69	134.60	499.08	0.51
Reyssouze	73	Crue 1935	116.00	191.83	194.98	194.40	194.98	0.000137	0.43	588.63	849.68	0.11
Reyssouze	72	Crue 1935	116.00	192.14	194.91	194.44	194.91	0.000100	0.39	581.69	636.52	0.10
Reyssouze	71	Crue 1935	116.00	191.84	194.86	194.00	194.86	0.000116	0.51	493.02	522.74	0.11
Reyssouze	70	Crue 1935	116.00	191.47	194.81	193.63	194.82	0.000125	0.58	416.45	385.37	0.11
Reyssouze	69.7	Crue 1935	116.00	190.90	194.81	193.03	194.81	0.000032	0.29	945.10	939.89	0.06
Reyssouze	69.6	Crue 1935	75.00	191.80	194.75	193.34	194.80	0.000819	1.00	76.43	835.88	0.34
Reyssouze	69.5	Bridge										
Reyssouze	69.4	Crue 1935	75.00	191.80	192.86	193.34	194.62	0.044706	5.87	12.78	29.86	2.37
Reyssouze	69	Crue 1935	75.00	190.01	193.77	191.79	193.79	0.000195	0.72	171.97	982.61	0.14
Reyssouze	68	Crue 1935	75.00	190.82	193.74	192.37	193.75	0.000289	0.72	211.90	1662.99	0.17
Reyssouze	67	Crue 1935	75.00	190.31	193.56	191.89	193.58	0.000244	0.75	167.23	1530.43	0.16
Reyssouze	66.6	Crue 1935	75.00	190.99	193.26	192.40	193.40	0.001440	1.83	46.84	1575.69	0.43
Reyssouze	66.5	Bridge										
Reyssouze	66.4	Crue 1935	75.00	190.99	193.02	192.40	193.24	0.002438	2.25	38.17	1555.67	0.56
Reyssouze	66	Crue 1935	75.00	190.65	193.13	191.93	193.16	0.000706	1.02	119.01	1756.62	0.26
Reyssouze	65	Crue 1935	118.00	189.14	191.51	191.36	191.65	0.002637	2.02	110.88	1173.64	0.49
Reyssouze	64.6	Crue 1935	118.00	189.11	191.46	191.31	191.52	0.001668	1.53	163.76	1127.75	0.47
Reyssouze	64.5	Bridge										
Reyssouze	64.4	Crue 1935	118.00	189.11	191.31	191.31	191.48	0.003474	2.30	113.02	1033.76	0.68
Reyssouze	64	Crue 1935	118.00	188.72	190.95	190.94	191.13	0.003255	2.31	112.24	1003.43	0.55
Reyssouze	63	Crue 1935	118.00	188.09	189.85	189.20	189.88	0.000980	1.10	188.29	287.09	0.29
Reyssouze	62	Crue 1935	118.00	187.89	189.68	189.05	189.69	0.000236	0.53	542.50	1090.90	0.14
Reyssouze	61	Crue 1935	118.00	187.02	189.57	188.55	189.57	0.000283	0.67	432.57	798.30	0.16
Reyssouze	60.6	Crue 1935	118.00	186.66	189.33	188.62	189.50	0.001323	1.82	64.91	44.85	0.48
Reyssouze	60.5	Bridge										
Reyssouze	60.4	Crue 1935	118.00	186.66	189.14	188.62	189.36	0.001896	2.07	56.87	42.21	0.57
Reyssouze	60	Crue 1935	118.00	186.53	189.09	188.24	189.19	0.001217	1.53	123.36	175.73	0.35
Reyssouze	37	Crue 1935	121.00	182.48	185.71	184.66	185.73	0.000541	1.04	297.25	561.29	0.23
Reyssouze	36	Crue 1935	121.00	182.19	185.61	184.70	185.61	0.000291	0.70	410.45	639.75	0.16
Reyssouze	35	Crue 1935	121.00	182.28	185.54	184.02	185.54	0.000117	0.51	526.44	631.69	0.11
Reyssouze	34.6	Crue 1935	121.00	182.17	185.38	183.92	185.53	0.000585	1.71	73.32	32.75	0.34
Reyssouze	34.5	Bridge										
Reyssouze	34.4	Crue 1935	121.00	182.17	185.32	183.92	185.47	0.000628	1.76	71.51	32.36	0.36
Reyssouze	34	Crue 1935	121.00	181.91	185.41	184.40	185.42	0.000203	0.70	409.61	523.14	0.14
Reyssouze	33.6	Crue 1935	121.00	182.01	185.14	184.01	185.38	0.001009	2.16	55.91	22.94	0.44
Reyssouze	33.5	Bridge										
Reyssouze	33.4	Crue 1935	121.00	182.01	185.07	184.01	185.32	0.001105	2.23	54.21	22.79	0.46
Reyssouze	33	Crue 1935	121.00	181.69	185.17	184.20	185.20	0.000579	0.98	267.94	631.07	0.23
Reyssouze	32	Crue 1935	121.00	181.63	185.08	183.97	185.11	0.000646	0.96	239.55	651.72	0.24
Reyssouze	31	Crue 1935	143.00	181.86	185.06	183.45	185.07	0.000187	0.68	416.08	617.23	0.14
Reyssouze	30	Crue 1935	143.00	181.63	185.05	184.29	185.05	0.000187	0.57	478.45	523.80	0.13
Reyssouze	29.6	Crue 1935	143.00	182.37	184.91	183.68	185.03	0.000640	1.58	92.29	46.06	0.35
Reyssouze	29.5	Bridge										
Reyssouze	29.4	Crue 1935	143.00	182.37	184.81	183.68	184.94	0.000740	1.66	87.87	44.39	0.37
Reyssouze	29	Crue 1935	143.00	182.10	184.82	183.54	184.87	0.000666	1.23	173.90	386.57	0.29
Reyssouze	28	Crue 1935	143.00	181.25	184.69	183.27	184.72	0.000361	1.01	344.80	490.33	0.19
Reyssouze	27	Crue 1935	143.00	180.28	184.24	182.51	184.35	0.000724	1.58	159.47	255.56	0.28
Reyssouze	26	Crue 1935	143.00	180.39	184.05	182.73	184.07	0.000210	0.82	439.26	515.88	0.15
Reyssouze	25	Crue 1935	143.00	180.26	183.91	182.39	183.93	0.000307	0.95	339.12	427.81	0.18
Reyssouze	24	Crue 1935	143.00	179.85	183.78	182.35	183.81	0.000330	0.96	355.42	519.60	0.19
Reyssouze	23	Crue 1935	143.00	180.14	183.73	182.37	183.74	0.000146	0.64	430.71	321.46	0.12
Reyssouze	22	Crue 1935	143.00	179.83	183.71	182.48	183.72	0.000208	0.73	414.37	382.86	0.13
Reyssouze	21.6	Crue 1935	143.00	180.61	183.67	182.38	183.71	0.000600	1.05	172.88	245.30	0.28
Reyssouze	21.5	Bridge										
Reyssouze	21.4	Crue 1935	143.00	180.61	183.66	182.38	183.70	0.000622	1.07	169.89	243.31	0.29
Reyssouze	21	Crue 1935	143.00	178.83	183.62	180.90	183.64	0.000149	0.70	379.79	342.66	0.13
Reyssouze	20	Crue 1935	143.00	178.65	183.60	180.87	183.61	0.000063	0.53	601.04	438.05	0.08
Reyssouze aval	12	Crue 1935	151.00	172.98	175.85	173.71	175.87	0.000203	0.53	297.57	224.22	0.14
Reyssouze aval	11	Crue 1935	32.00	172.65	175.84	173.63	175.84	0.000040	0.32	148.48	378.50	0.06
Reyssouze aval	10.6	Crue 1935	32.00	171.57	175.76	174.48	175.82	0.000728		29.60	48.20	0.00
Reyssouze aval	10.5	Bridge										
Reyssouze aval	10.4	Crue 1935	32.00	171.57	175.31	174.84	175.61	0.002930		13.33	41.00	0.00
Reyssouze aval	10	Crue 1935	32.00	169.72	175.50	171.30	175.51	0.000055	0.46	69.83	70.86	0.08
Reyssouze aval	9	Crue 1935	32.00	170.66	175.50	171.86	175.50	0.000015	0.24	278.75	308.77	0.04
Reyssouze aval	8	Crue 1935	32.00	170.31	175.50	171.59	175.50	0.000008	0.18	426.66	479.41	0.03
Reyssouze aval	7	Crue 1935	32.00	169.83	175.50	174.45	175.50	0.000004	0.12	588.89	532.31	0.02
Reyssouze aval	6	Crue 1935	178.00	170.60	175.47	174.48	175.48	0.000125	0.66	579.93	484.46	0.12
Reyssouze aval	5	Crue 1935	178.00	169.21	175.44	172.02	175.45	0.000086	0.65	589.31	447.32	0.10
Reyssouze aval	4	Crue 1935	178.00	170.16	175.39	172.69	175.40	0.000117	0.75	590.26	586.43	0.12
Reyssouze aval	3	Crue 1935	178.00	169.91	175.35	172.65	175.37	0.000174	0.90	396.06	291.48	0.14
Reyssouze aval	2	Crue 1935	178.00	169.72	175.20	172.33	175.32	0.000738	1.48	120.05	38.99	0.27

HEC-RAS Plan: Q1935-normal Profile: Crue 1935 (Continued)

Reach	River Sta	Profile	Q Total (m3/s)	Min Ch El (m)	W.S. Elev (m)	Crit W.S. (m)	E.G. Elev (m)	E.G. Slope (m/m)	Vel Chnl (m/s)	Flow Area (m2)	Top Width (m)	Froude # Chl
Reyssouze aval	0.65	Crue 1935	178.00	170.94	175.10	173.59	175.11	0.000056	0.55	708.61	455.15	0.11
Reyssouze aval	0.6	Crue 1935	178.00	170.65	175.10	172.01	175.11	0.000026	0.53	782.00	455.01	0.08
Reyssouze aval	0.5	Crue 1935	178.00	168.96	175.00	172.79	175.07	0.000339	1.33	225.38	141.75	0.24
Reyssouze aval	0.45	Bridge										
Reyssouze aval	0.4	Crue 1935	178.00	168.96	174.99	172.79	175.06	0.000345	1.34	223.53	141.17	0.24
Reyssouze aval	0.3	Crue 1935	178.00	169.11	174.69	170.99	174.79	0.000230	1.45	122.71	22.00	0.20
Reyssouze aval	0.25	Bridge										
Reyssouze aval	0.2	Crue 1935	178.00	169.11	174.67	170.99	174.77	0.000232	1.46	122.24	22.00	0.20
Reyssouze aval	0.1	Crue 1935	178.00	168.75	174.73	170.85	174.74	0.000032	0.62	374.64	170.28	0.09

Reach	River Sta	Profile	Q Total (m3/s)	Min Ch El (m)	W.S. Elev (m)	Crit W.S. (m)	E.G. Elev (m)	E.G. Slope (m/m)	Vel Chnl (m/s)	Flow Area (m2)	Top Width (m)	Froude # Chl
Reyssouze aval	12	Crue 1935	151.00	172.98	175.85	173.71	175.87	0.000203	0.53	297.57	224.22	0.14
Reyssouze aval	11	Crue 1935	32.00	172.65	175.84	173.63	175.84	0.000040	0.32	148.48	378.50	0.06
Reyssouze aval	10.6	Crue 1935	32.00	171.57	175.76	174.48	175.82	0.000728		29.60	48.20	0.00
Reyssouze aval	10.5	Bridge										
Reyssouze aval	10.4	Crue 1935	32.00	171.57	175.31	174.84	175.61	0.002930		13.33	41.00	0.00
Reyssouze aval	10	Crue 1935	32.00	169.72	175.50	171.30	175.51	0.000055	0.46	69.83	70.86	0.08
Reyssouze aval	9	Crue 1935	32.00	170.66	175.50	171.86	175.50	0.000015	0.24	278.75	308.77	0.04
Reyssouze aval	8	Crue 1935	32.00	170.31	175.50	171.59	175.50	0.000008	0.18	426.66	479.41	0.03
Reyssouze aval	7	Crue 1935	32.00	169.83	175.50	174.45	175.50	0.000004	0.12	588.89	532.31	0.02
Reyssouze aval	6	Crue 1935	178.00	170.60	175.47	174.48	175.48	0.000125	0.66	579.93	484.46	0.12
Reyssouze aval	5	Crue 1935	178.00	169.21	175.44	172.02	175.45	0.000086	0.65	589.31	447.32	0.10
Reyssouze aval	4	Crue 1935	178.00	170.16	175.39	172.69	175.40	0.000117	0.75	590.26	586.43	0.12
Reyssouze aval	3	Crue 1935	178.00	169.91	175.35	172.65	175.37	0.000174	0.90	396.06	291.48	0.14
Reyssouze aval	2	Crue 1935	178.00	169.72	175.20	172.33	175.32	0.000738	1.48	120.05	38.99	0.27
Reyssouze aval	1.6	Crue 1935	178.00	171.15	175.20	172.68	175.31	0.000559	1.46	121.56	30.00	0.23
Reyssouze aval	1.5	Bridge										
Reyssouze aval	1.4	Crue 1935	178.00	171.15	175.12	172.68	175.24	0.000594	1.49	119.19	30.00	0.24
Reyssouze aval	1	Crue 1935	178.00	169.41	175.14	171.58	175.20	0.000242	1.08	164.53	44.47	0.17
Reyssouze aval	0.9	Crue 1935	178.00	170.87	175.13	172.73	175.17	0.000313	1.10	271.19	250.11	0.19
Reyssouze aval	0.8	Crue 1935	178.00	170.91	175.11	173.46	175.13	0.000184	0.78	419.90	305.11	0.14
Reyssouze aval	0.7	Crue 1935	178.00	170.94	175.10	173.59	175.11	0.000056	0.55	708.69	455.17	0.11
Reyssouze aval	0.65	Crue 1935	178.00	170.94	175.10	173.59	175.11	0.000056	0.55	708.61	455.15	0.11
Reyssouze aval	0.6	Crue 1935	178.00	170.65	175.10	172.01	175.11	0.000026	0.53	782.00	455.01	0.08
Reyssouze aval	0.5	Crue 1935	178.00	168.96	175.00	172.79	175.07	0.000339	1.33	225.38	141.75	0.24
Reyssouze aval	0.45	Bridge										
Reyssouze aval	0.4	Crue 1935	178.00	168.96	174.99	172.79	175.06	0.000345	1.34	223.53	141.17	0.24
Reyssouze aval	0.3	Crue 1935	178.00	169.11	174.69	170.99	174.79	0.000230	1.45	122.71	22.00	0.20
Reyssouze aval	0.25	Bridge										
Reyssouze aval	0.2	Crue 1935	178.00	169.11	174.67	170.99	174.77	0.000232	1.46	122.24	22.00	0.20
Reyssouze aval	0.1	Crue 1935	178.00	168.75	174.73	170.84	174.74	0.000032	0.62	374.64	170.28	0.09
Reyssouze	828	Crue 1935	15.00	244.60	246.88	246.00	247.13	0.006409	2.18	6.88	3.12	0.47
Reyssouze	827	Crue 1935	15.00	242.90	245.49	245.49	245.81	0.026896	2.51	5.98	513.71	1.38
Reyssouze	826	Crue 1935	58.00	242.70	244.81	244.28	244.82	0.000193	0.29	261.26	420.35	0.10
Reyssouze	825	Crue 1935	58.00	242.82	244.51	244.39	244.70	0.006327	2.42	39.77	100.34	0.72
Reyssouze	824	Crue 1935	58.00	242.46	244.34	243.78	244.36	0.000857	0.93	137.18	247.53	0.26
Reyssouze	823	Crue 1935	58.00	241.71	244.30	243.31	244.30	0.000132	0.49	205.93	185.00	0.11
Reyssouze	822.6	Crue 1935	58.00	241.23	244.26	243.52	244.30	0.000708	1.02	82.67	174.02	0.24
Reyssouze	822.5	Culvert										
Reyssouze	822.4	Crue 1935	58.00	241.23	243.55	243.55	244.29	0.013246	3.81	15.22	10.34	1.00
Reyssouze	822	Crue 1935	58.00	240.87	243.56	243.29	243.64	0.001800	1.68	67.21	95.15	0.39
Reyssouze	821	Crue 1935	58.00	241.25	243.36	243.06	243.43	0.001832	1.59	68.47	97.95	0.40
Reyssouze	820	Crue 1935	58.00	240.91	242.91	242.56	242.94	0.000918	1.04	102.21	151.40	0.28
Reyssouze	819	Crue 1935	58.00	239.97	242.63	242.24	242.69	0.001321	1.44	67.87	83.75	0.35
Reyssouze	818	Crue 1935	58.00	239.83	242.49	241.97	242.52	0.000987	1.11	98.40	117.68	0.29
Reyssouze	817	Crue 1935	58.00	239.81	242.43	241.22	242.45	0.000587	0.96	148.77	242.62	0.20
Reyssouze	816.6	Crue 1935	58.00	240.05	242.10	242.10	242.35	0.005244	2.58	61.84	155.03	0.66
Reyssouze	816.5	Bridge										
Reyssouze	816.4	Crue 1935	58.00	240.05	241.92	241.96	242.13	0.005671	2.50	36.36	125.71	0.67
Reyssouze	816	Crue 1935	58.00	239.27	241.86	241.51	241.93	0.001553	1.59	71.49	102.94	0.36
Reyssouze	815	Crue 1935	58.00	239.58	241.79	241.36	241.81	0.000604	1.04	129.05	213.04	0.24
Reyssouze	814	Crue 1935	58.00	239.06	241.44	241.44	241.66	0.004190	2.40	45.09	102.90	0.59
Reyssouze	813	Crue 1935	58.00	237.39	241.01	239.64	241.08	0.000872	1.34	57.51	45.12	0.29
Reyssouze	812.75	Crue 1935	58.00	237.57	240.74	240.12	240.99	0.003021	2.46	30.68	18.98	0.45
Reyssouze	812.6	Crue 1935	58.00	237.60	239.98	239.80	240.88	0.008121	4.20	13.80	6.01	0.89
Reyssouze	812.5	Bridge										
Reyssouze	812.4	Crue 1935	58.00	237.60	239.78	239.80	240.87	0.011042	4.61	12.58	6.01	1.02
Reyssouze	812	Crue 1935	58.00	237.67	239.37	239.68	240.58	0.023439	4.87	11.91	8.69	1.33
Reyssouze	811	Crue 1935	58.00	237.04	239.45	239.04	239.74	0.003931	2.51	31.82	54.00	0.58
Reyssouze	810	Crue 1935	58.00	236.51	238.48	238.48	239.05	0.009565	3.37	18.47	24.20	0.90
Reyssouze	809	Crue 1935	58.00	234.96	236.99	236.99	237.01	0.001442	0.92	104.99	183.83	0.30
Reyssouze	808	Crue 1935	58.00	234.02	235.85	235.85	236.04	0.006762	2.49	43.44	96.80	0.74
Reyssouze	807	Crue 1935	62.00	233.05	235.75	234.83	235.76	0.000151	0.55	207.99	186.61	0.12
Reyssouze	806.6	Crue 1935	62.00	232.97	235.35	234.60	235.68	0.003464	2.58	24.53	10.91	0.55
Reyssouze	806.5	Bridge										
Reyssouze	806.4	Crue 1935	62.00	232.97	235.29	234.60	235.64	0.003758	2.64	23.88	10.91	0.57
Reyssouze	806	Crue 1935	62.00	232.65	234.81	234.80	235.34	0.010457	3.22	20.16	27.01	0.91
Reyssouze	805	Crue 1935	62.00	232.12	234.40	234.13	234.45	0.001493	1.41	87.79	157.11	0.36
Reyssouze	804	Crue 1935	62.00	232.32	234.26	234.10	234.27	0.000575	0.55	113.39	161.72	0.21
Reyssouze	803	Crue 1935	62.00	231.14	234.09	233.13	234.10	0.000312	0.74	158.26	186.72	0.17
Reyssouze	802	Crue 1935	62.00	231.24	233.87	233.18	233.92	0.000751	1.29	89.61	103.58	0.28
Reyssouze	801	Crue 1935	62.00	230.66	233.72	232.53	233.75	0.000361	0.92	108.08	74.20	0.19
Reyssouze	800.5	Crue 1935	62.00	230.69	233.70	232.58	233.72	0.000223	0.67	151.68	165.97	0.15
Reyssouze	800	Crue 1935	62.00	230.73	233.69	232.45	233.70	0.000171	0.65	184.46	150.11	0.13
Reyssouze	795	Bridge										
Reyssouze	790	Crue 1935	62.00	230.02	233.62	232.05	233.66	0.001114	1.03	177.95	195.40	0.20
Reyssouze	789	Crue 1935	62.00	229.60	233.05	231.44	233.18	0.004341	1.61	41.06	128.98	0.30
Reyssouze	788	Crue 1935	62.00	228.78	232.35	230.86	232.46	0.003933	1.53	46.24	134.47	0.29
Reyssouze	787	Crue 1935	62.00	228.58	232.13	230.77	232.13	0.000463	0.50	244.42	223.12	0.10
Reyssouze	786	Crue 1935	62.00	228.70	232.02	231.13	232.03	0.000546	0.82	185.99	151.58	0.15
Reyssouze	785	Crue 1935	62.00	228.40	231.99	230.76	232.00	0.000467	0.69	196.57	164.45	0.14
Reyssouze	784	Crue 1935	62.00	227.88	231.98	230.49	231.99	0.000025	0.18	224.69	159.82	0.03
Reyssouze	783	Crue 1935	62.00	227.69	231.97	230.15	231.98	0.000312	0.65	232.33	171.84	0.11
Reyssouze	782.6	Crue 1935	62.00	227.86	231.92	230.23	231.97	0.000569	0.92	67.42	40.06	0.23
Reyssouze	782.5	Bridge										
Reyssouze	782.4	Crue 1935	62.00	227.86	231.91	230.23	231.96	0.000580	0.93	66.94	40.06	0.23
Reyssouze	782	Crue 1935	62.00	228.29	231.90	230.52	231.92	0.000386	0.66	190.81	133.98	0.13
Reyssouze	781.5	Crue 1935	62.00	228.44	231.60	230.64	231.83	0.005971	2.10	29.48	37.34	0.47
Reyssouze	781	Bridge										
Reyssouze	780.5	Crue 1935	62.00	228.44	231.52	230.64	231.76	0.006749	2.20	28.22	36.83	0.50
Reyssouze	780	Crue 1935	62.00	228.81	231.29	230.54	231.37	0.001701	1.37	60.25	316.37	0.29
Reyssouze	779	Crue 1935	62.00	228.19	231.28	230.37	231.28	0.000121	0.58	278.06	213.45	0.12
Reyssouze	778	Crue 1935	62.00	227.61	231.18	229.87	231.24	0.000550				

Reach	River Sta	Profile	Q Total (m3/s)	Min Ch El (m)	W.S. Elev (m)	Crit W.S. (m)	E.G. Elev (m)	E.G. Slope (m/m)	Vel Chnl (m/s)	Flow Area (m2)	Top Width (m)	Froude # Chl
Reyssouze	770.5		Bridge									
Reyssouze	770	Crue 1935	62.00	226.65	230.14	228.49	230.16	0.000245	0.87	143.99	157.95	0.16
Reyssouze	768	Crue 1935	62.00	226.62	230.12	228.09	230.13	0.000123	0.61	167.26	319.47	0.12
Reyssouze	767.5		Bridge									
Reyssouze	767	Crue 1935	62.00	226.89	230.11	228.44	230.12	0.000185	0.68	151.48	314.55	0.15
Reyssouze	766.5		Bridge									
Reyssouze	766	Crue 1935	75.00	226.37	230.10	228.16	230.11	0.000118	0.64	212.24	197.74	0.12
Reyssouze	765	Crue 1935	75.00	225.51	230.10	227.29	230.10	0.000024	0.32	529.84	376.18	0.05
Reyssouze	764	Crue 1935	75.00	226.25	230.10	228.13	230.10	0.000011	0.22	639.97	407.39	0.04
Reyssouze	763	Crue 1935	75.00	225.44	230.10	227.21	230.10	0.000014	0.25	611.90	320.82	0.04
Reyssouze	762	Crue 1935	75.00	225.42	230.10	227.15	230.10	0.000012	0.23	670.96	370.21	0.04
Reyssouze	761.5		Bridge									
Reyssouze	761	Crue 1935	75.00	225.28	229.46	226.87	229.49	0.000210	0.87	160.52	197.46	0.15
Reyssouze	760	Crue 1935	75.00	225.39	229.41	226.92	229.47	0.000377	1.14	80.21	83.68	0.20
Reyssouze	759	Crue 1935	39.50	225.86	229.41	227.28	229.44	0.000259	0.84	68.57	164.60	0.16
Reyssouze	479.6	Crue 1935	39.50	226.25	229.26	228.10	229.42	0.001400	2.02	37.47	46.23	0.37
Reyssouze	479.51	Crue 1935	39.50	226.25	229.25	228.10	229.41	0.001434	2.04	36.97	46.18	0.38
Reyssouze	479.5	Crue 1935	39.50	226.56	228.51	228.41	229.35	0.009130	4.06	9.83	9.22	0.93
Reyssouze	479.49	Crue 1935	39.50	226.56	228.41	228.41	229.34	0.010509	4.27	9.25	5.00	1.00
Reyssouze	479.4	Crue 1935	39.50	226.25	227.65	228.10	229.27	0.022928	5.64	7.01	5.00	1.52
Reyssouze	479.3	Crue 1935	39.50	226.25	228.35	228.10	229.07	0.007400	3.76	10.51	5.00	0.83
Reyssouze	479	Crue 1935	39.50	225.32	228.76	227.03	228.78	0.000349	0.67	90.11	166.69	0.18
Reyssouze	478	Crue 1935	39.50	225.30	228.74	226.63	228.76	0.000207	0.73	108.95	180.48	0.14
Reyssouze	477	Crue 1935	39.50	224.67	228.73	226.30	228.73	0.000114	0.48	139.78	184.36	0.10
Reyssouze	476	Crue 1935	39.50	225.26	228.63	227.17	228.70	0.000743	1.26	45.45	70.17	0.26
Reyssouze	475	Crue 1935	39.50	225.45	228.59	226.69	228.63	0.000485	0.83	47.98	34.18	0.21
Reyssouze	472	Crue 1935	39.50	225.19	228.54	226.97	228.55	0.000192	0.68	163.16	133.62	0.13
Reyssouze	471.5	Crue 1935	39.50	225.54	228.37	226.93	228.51	0.001591	1.65	23.93	9.15	0.33
Reyssouze	471		Bridge									
Reyssouze	470.5	Crue 1935	39.50	225.54	228.28	226.93	228.43	0.001771	1.71	23.04	9.12	0.34
Reyssouze	470	Crue 1935	39.50	225.28	228.37	226.73	228.38	0.000126	0.48	137.07	125.77	0.11
Reyssouze	466	Crue 1935	39.50	225.40	228.29	226.90	228.36	0.000822	1.12	35.40	20.77	0.27
Reyssouze	465.5		Bridge									
Reyssouze	465	Crue 1935	39.50	225.40	228.20	226.91	228.27	0.000957	1.18	33.43	20.18	0.29
Reyssouze	463	Crue 1935	39.50	225.66	227.99	227.19	228.14	0.002271	1.72	22.94	15.03	0.44
Reyssouze	462.5		Bridge									
Reyssouze	462	Crue 1935	39.50	225.66	227.64	227.19	227.89	0.004440	2.20	17.95	13.50	0.61
Reyssouze	464	Crue 1935	39.50	224.94	227.64	225.94	227.65	0.000119	0.41	97.92	337.21	0.11
Reyssouze	453	Crue 1935	39.50	224.93	227.61	225.92	227.64	0.000227	0.70	57.52	144.91	0.15
Reyssouze	451	Crue 1935	18.00	224.70	227.59	226.20	227.62	0.000529	0.80	22.42	11.87	0.19
Reyssouze	450.5		Bridge									
Reyssouze	450	Crue 1935	18.00	224.62	227.26	225.42	227.29	0.000544	0.82	22.07	8.47	0.16
Reyssouze	449	Crue 1935	22.00	224.78	227.16	226.17	227.26	0.001593	1.48	18.49	22.81	0.35
Reyssouze	438	Crue 1935	22.00	225.07	227.16	225.93	227.21	0.000591	1.01	28.63	25.03	0.22
Reyssouze	437.5		Bridge									
Reyssouze	437	Crue 1935	22.00	225.07	227.14	225.93	227.18	0.000625	1.03	27.97	25.03	0.23
Reyssouze	435	Crue 1935	22.00	224.44	227.13	225.61	227.17	0.000311	0.91	35.14	27.04	0.19
Reyssouze	434.5		Bridge									
Reyssouze	434	Crue 1935	22.00	224.44	227.12	225.61	227.16	0.000315	0.91	34.95	27.04	0.19
Reyssouze	432	Crue 1935	22.00	224.50	227.10	225.49	227.12	0.000362	0.78	40.44	31.65	0.16
Reyssouze	431.5		Bridge									
Reyssouze	431	Crue 1935	22.00	224.50	227.09	225.49	227.12	0.000365	0.78	40.29	31.65	0.16
Reyssouze	429	Crue 1935	21.00	224.38	227.05	225.40	227.09	0.000334	0.79	26.68	29.70	0.17
Reyssouze	428.5		Bridge									
Reyssouze	428	Crue 1935	21.00	223.73	226.43	224.74	226.47	0.000277	0.83	26.73	36.58	0.17
Reyssouze	426	Crue 1935	14.00	223.97	226.42	224.73	226.44	0.000301	0.60	23.33	13.25	0.13
Reyssouze	425.5		Bridge									
Reyssouze	425	Crue 1935	14.00	223.97	226.29	224.73	226.31	0.000356	0.64	21.85	10.25	0.14
Reyssouze	423	Crue 1935	14.00	223.87	226.30	224.59	226.31	0.000141	0.47	46.20	42.57	0.10
Reyssouze	422.5		Bridge									
Reyssouze	422	Crue 1935	14.00	223.87	226.30	224.59	226.31	0.000141	0.47	46.15	42.57	0.10
Reyssouze	421	Crue 1935	14.00	223.82	226.30	224.53	226.30	0.000057	0.38	48.41	38.62	0.08
Reyssouze	420.5		Bridge									
Reyssouze	420	Crue 1935	8.00	223.82	226.30	224.35	226.30	0.000019	0.22	48.33	38.62	0.05
Reyssouze	416	Crue 1935	7.00	223.46	226.30	223.93	226.30	0.000014	0.13	54.40	33.71	0.03
Reyssouze	415.5		Bridge									
Reyssouze	415	Crue 1935	7.00	223.46	226.29	223.93	226.30	0.000014	0.13	54.39	33.71	0.03
Reyssouze	411	Crue 1935	0.00	223.33	226.30	223.35	226.30	0.000000	0.00	53.30	32.23	0.00
Reyssouze	410.5		Bridge									
Reyssouze	410	Crue 1935	0.00	223.33	226.30	223.35	226.30	0.000000	0.00	53.30	32.23	0.00
Reyssouze	406	Crue 1935	0.00	223.45	226.30	223.29	226.30	0.000000	0.00	81.80	76.54	0.00
Reyssouze	405.5		Bridge									
Reyssouze	405	Crue 1935	0.00	223.45	226.30	223.47	226.30	0.000000	0.00	60.80	76.54	0.00
Reyssouze	306	Crue 1935	62.00	223.14	226.09	224.81	226.22	0.001282	1.60	49.31	67.75	0.35
Reyssouze	305.5		Bridge									
Reyssouze	305	Crue 1935	60.00	223.14	225.91	224.78	226.07	0.001765	1.78	36.55	45.33	0.40
Reyssouze	301.6	Crue 1935	60.00	222.82	225.67	224.58	225.80	0.001272	1.57	38.74	21.55	0.35
Reyssouze	301.5		Bridge									
Reyssouze	301.4	Crue 1935	60.00	222.82	225.67	224.57	225.79	0.001285	1.57	38.62	21.51	0.35
Reyssouze	301	Crue 1935	21.00	223.22	225.71	224.16	225.74	0.000308	0.74	39.56	61.21	0.17
Reyssouze	300		Bridge									
Reyssouze	299	Crue 1935	21.00	223.22	225.71	224.16	225.73	0.000313	0.74	39.18	60.50	0.17
Reyssouze	197	Crue 1935	21.00	223.08	225.64	224.19	225.68	0.000523	0.89	23.71	16.02	0.21
Reyssouze	196.5		Bridge									
Reyssouze	196	Crue 1935	21.00	223.08	225.47	224.19	225.52	0.000701	0.99	21.24	12.95	0.25
Reyssouze	195	Crue 1935	21.00	223.27	225.38	224.58	225.46	0.001875	1.33	25.46	283.91	0.37
Reyssouze	194	Crue 1935	21.00	223.03	225.32	224.41	225.35	0.000997	1.03	43.03	34.96	0.22
Reyssouze	193.8	Crue 1935	21.00	223.14	225.30	224.63	225.35	0.000801	1.34	41.30	34.95	0.29
Reyssouze	193.79	Crue 1935	21.00	223.98	225.29	224.77	225.35	0.001466	1.58	37.83	34.95	0.44
Reyssouze	193.78	Crue 1935	21.00	223.98	225.29	224.77	225.35	0.001466	1.58	37.82	34.95	0.44
Reyssouze	193.77	Crue 1935	21.00	223.14	225.30	224.64	225.35	0.000803	1.34	41.26	34.95	0.29
Reyssouze	193.6	Crue 1935	21.00	223.17	225.30	224.39	225.33	0.000535	0.92	31.28	36.00	0.21
Reyssouze	193.5		Bridge									
Reyssouze	193.4	Crue 1935	21.00	222.46	225.27	223.79	225.31	0.000387	1.11	32.30	40.68	0.21
Reyssouze	191	Crue 1935	21.00	222.65	225.19	223.88	225.29	0.000799	1.48	18.80	12.16	0.30
Reyssouze	190.5		Bridge									
Reyssouze	190	Crue 1935	21.00	222.65	224.51	223.88	224.75	0.002653	2.19	10.73	6.79	0.52
Reyssouze	188	Crue 1935	21.00	222.13	224.56	223.06	224.59	0.000379	0.79	31.64	19.10	0.17
Reyssouze	187	Crue 1935	21.00	221.93	224.53	223.04	224.55	0.000287	0.			

Reach	River Sta	Profile	Q Total (m3/s)	Min Ch El (m)	W.S. Elev (m)	Crit W.S. (m)	E.G. Elev (m)	E.G. Slope (m/m)	Vel Chnl (m/s)	Flow Area (m2)	Top Width (m)	Froude # Chl
Reyssouze	186	Crue 1935	21.00	221.38	224.43	222.99	224.52	0.001107	1.33	15.81	6.42	0.27
Reyssouze	185.5	Bridge										
Reyssouze	185	Crue 1935	21.00	221.38	224.27	222.99	224.37	0.001358	1.42	14.77	6.42	0.30
Reyssouze	181	Crue 1935	45.00	221.73	224.23	223.19	224.26	0.000630	0.92	62.98	62.50	0.22
Reyssouze	180.5	Bridge										
Reyssouze	180	Crue 1935	45.00	221.73	224.14	223.19	224.19	0.000758	1.16	55.42	62.33	0.24
Reyssouze	176	Crue 1935	39.00	220.68	223.89	222.39	224.06	0.001375	1.84	21.27	8.00	0.35
Reyssouze	175.5	Bridge										
Reyssouze	175	Crue 1935	39.00	220.68	223.56	222.39	223.78	0.002095	2.09	18.70	7.71	0.43
Reyssouze	171	Crue 1935	39.00	221.06	223.63	222.29	223.69	0.000702	1.10	40.82	54.16	0.26
Reyssouze	170.5	Bridge										
Reyssouze	170	Crue 1935	39.00	221.06	223.50	222.28	223.58	0.000937	1.21	32.90	24.53	0.29
Reyssouze	165.6	Crue 1935	39.00	220.34	223.45	221.68	223.50	0.000394	1.08	40.37	19.78	0.21
Reyssouze	165.5	Bridge										
Reyssouze	165.4	Crue 1935	39.00	220.34	223.40	221.68	223.46	0.000415	1.10	39.47	19.57	0.21
Reyssouze	161	Crue 1935	39.00	220.34	223.39	221.50	223.44	0.000421	1.03	39.77	16.87	0.20
Reyssouze	160.5	Bridge										
Reyssouze	160	Crue 1935	39.00	220.34	223.37	221.50	223.43	0.000427	1.03	39.58	16.85	0.20
Reyssouze	155.6	Crue 1935	39.00	220.44	223.16	221.95	223.39	0.001463	2.11	18.50	6.90	0.41
Reyssouze	155.5	Bridge										
Reyssouze	155.4	Crue 1935	39.00	220.44	223.10	221.95	223.34	0.001568	2.15	18.12	6.90	0.42
Reyssouze	155.3	Crue 1935	39.00	220.30	223.19	221.86	223.30	0.001171	1.50	25.97	11.96	0.32
Reyssouze	155.2	Bridge										
Reyssouze	155.1	Crue 1935	39.00	220.30	223.11	221.86	223.23	0.001311	1.56	25.07	11.60	0.33
Reyssouze	150.6	Crue 1935	45.00	219.98	223.09	221.60	223.18	0.000842	1.30	35.31	20.79	0.28
Reyssouze	150.5	Bridge										
Reyssouze	150.4	Crue 1935	45.00	219.98	222.62	221.60	222.76	0.001751	1.66	27.07	15.26	0.40
Reyssouze	146	Crue 1935	45.00	219.16	222.02	220.84	222.19	0.001317	1.88	26.11	11.79	0.38
Reyssouze	145.5	Bridge										
Reyssouze	145	Crue 1935	45.00	219.16	221.92	220.84	222.11	0.001513	1.96	24.94	11.68	0.40
Reyssouze	137	Crue 1935	45.00	218.95	221.74	220.44	221.80	0.000608	1.16	58.88	65.19	0.24
Reyssouze	136	Crue 1935	45.00	219.04	221.51	220.27	221.61	0.001085	1.41	32.29	18.22	0.32
Reyssouze	135	Crue 1935	45.00	218.83	221.29	220.16	221.39	0.001217	1.47	36.57	55.40	0.34
Reyssouze	134.5	Crue 1935	39.00	218.61	221.14	220.13	221.28	0.001773	1.70	26.26	30.55	0.39
Reyssouze	134.4	Crue 1935	39.00	219.20	220.79	220.35	221.08	0.002825	2.41	20.22	77.76	0.61
Reyssouze	134.3	Crue 1935	30.00	218.20	220.96	219.17	221.00	0.000287	1.01	46.10	99.70	0.19
Reyssouze	134	Crue 1935	30.00	218.58	220.92	219.60	220.96	0.000576	0.96	31.18	233.88	0.23
Reyssouze	133	Crue 1935	30.00	218.83	220.58	219.93	220.72	0.002409	1.63	18.36	13.64	0.45
Reyssouze	132.6	Crue 1935	30.00	217.93	219.49	218.99	219.69	0.003704	1.96	15.33	11.39	0.54
Reyssouze	132.5	Bridge										
Reyssouze	132.4	Crue 1935	30.00	217.93	219.38	218.99	219.61	0.004791	2.13	14.06	11.21	0.61
Reyssouze	132	Crue 1935	69.00	216.62	219.42	218.39	219.47	0.000832	1.20	99.20	133.59	0.27
Reyssouze	131	Crue 1935	69.00	216.74	219.35	218.62	219.37	0.000645	0.91	140.52	208.73	0.24
Reyssouze	130	Crue 1935	84.00	216.93	219.28	218.83	219.30	0.000438	0.89	188.21	217.91	0.20
Reyssouze	129.6	Crue 1935	84.00	217.25	219.18	218.76	219.27	0.001566	1.54	68.52	66.69	0.38
Reyssouze	129.4	Crue 1935	84.00	217.25	219.15	218.76	219.24	0.001756	1.61	66.00	66.69	0.40
Reyssouze	129.3	Crue 1935	84.00	217.20	218.96	218.85	219.17	0.003314	2.21	47.78	79.75	0.55
Reyssouze	129.2	Bridge										
Reyssouze	129.1	Crue 1935	84.00	217.20	218.85	218.85	219.15	0.005038	2.60	39.31	71.07	0.68
Reyssouze	129	Crue 1935	84.00	216.93	218.96	218.60	218.99	0.000934	1.04	148.68	233.20	0.29
Reyssouze	128	Crue 1935	52.00	216.48	218.73	217.87	218.81	0.001226	1.42	56.78	331.88	0.34
Reyssouze	127	Crue 1935	52.00	216.53	218.55	217.71	218.64	0.001536	1.42	52.20	72.77	0.36
Reyssouze	126	Crue 1935	52.00	216.09	217.75	217.50	218.11	0.006652	2.67	19.49	14.98	0.75
Reyssouze	125	Crue 1935	52.00	215.97	217.74	217.40	217.75	0.000483	0.70	143.13	235.14	0.20
Reyssouze	124	Crue 1935	52.00	215.06	217.62	216.75	217.64	0.000375	0.78	116.03	132.17	0.19
Reyssouze	123.6	Crue 1935	52.00	214.83	217.52	216.75	217.61	0.001780	1.60	47.05	106.21	0.36
Reyssouze	123.5	Bridge										
Reyssouze	123.4	Crue 1935	52.00	214.83	216.74	216.74	217.49	0.015182	3.84	13.53	9.10	1.01
Reyssouze	123	Crue 1935	52.00	214.28	216.53	215.72	216.72	0.002675	1.89	27.47	17.59	0.48
Reyssouze	122	Crue 1935	52.00	214.28	216.05	215.71	216.39	0.005930	2.61	19.96	14.36	0.71
Reyssouze	121	Crue 1935	52.00	213.68	215.61	215.31	215.64	0.000978	1.09	103.50	250.45	0.29
Reyssouze	120	Crue 1935	84.00	213.35	215.52	214.67	215.52	0.000178	0.53	344.55	455.34	0.13
Reyssouze	119.6	Crue 1935	84.00	212.44	215.46	215.38	215.50	0.000833	1.27	151.39	633.65	0.26
Reyssouze	119.5	Bridge										
Reyssouze	119.4	Crue 1935	84.00	212.44	215.38	215.38	215.47	0.001647	1.75	106.01	535.03	0.37
Reyssouze	119	Crue 1935	84.00	212.75	214.55	214.35	214.58	0.000983	1.10	198.09	486.64	0.29
Reyssouze	118	Crue 1935	106.00	211.96	214.25	214.02	214.28	0.001067	1.10	226.35	572.00	0.30
Reyssouze	117	Crue 1935	106.00	211.80	214.10	213.57	214.11	0.000406	0.70	280.42	367.77	0.19
Reyssouze	116	Crue 1935	106.00	211.57	213.77	213.64	213.88	0.002818	1.85	105.37	449.50	0.50
Reyssouze	115	Crue 1935	106.00	211.05	213.69	213.24	213.70	0.000197	0.57	389.36	459.47	0.13
Reyssouze	114.6	Crue 1935	106.00	211.02	213.22	212.75	213.58	0.004633	2.68	40.54	67.72	0.66
Reyssouze	114.5	Bridge										
Reyssouze	114.4	Crue 1935	106.00	211.02	212.53	212.75	213.50	0.019952	4.37	24.28	20.80	1.29
Reyssouze	114	Crue 1935	106.00	210.59	213.16	212.83	213.18	0.000620	1.07	243.04	376.27	0.24
Reyssouze	113	Crue 1935	106.00	210.52	212.71	212.45	212.86	0.002499	2.12	85.39	108.25	0.48
Reyssouze	112	Crue 1935	106.00	210.05	212.46	212.00	212.49	0.000762	1.10	162.37	159.32	0.27
Reyssouze	111.6	Crue 1935	106.00	210.04	212.17	211.59	212.40	0.003511	2.12	49.96	32.84	0.57
Reyssouze	111.5	Bridge										
Reyssouze	111.4	Crue 1935	106.00	210.04	211.94	211.59	212.25	0.005552	2.48	42.40	31.20	0.70
Reyssouze	111	Crue 1935	106.00	209.93	211.99	211.78	212.01	0.000638	0.92	225.81	336.63	0.24
Reyssouze	110	Crue 1935	106.00	209.19	211.66	211.38	211.71	0.001227	1.40	173.27	387.43	0.34
Reyssouze	109	Crue 1935	106.00	208.66	210.90	210.72	210.93	0.001317	1.17	204.93	513.41	0.34
Reyssouze	108.6	Crue 1935	106.00	208.72	210.62	210.44	210.69	0.001547	1.42	105.22	252.96	0.36
Reyssouze	108.5	Bridge										
Reyssouze	108.4	Crue 1935	106.00	208.72	210.55	210.45	210.65	0.002222	1.66	89.77	205.90	0.43
Reyssouze	108	Crue 1935	106.00	208.60	210.32	210.28	210.58	0.006620	2.47	71.48	222.50	0.74
Reyssouze	107	Crue 1935	106.00	208.43	210.22	209.93	210.24	0.001309	0.94	195.45	377.12	0.32
Reyssouze	106	Crue 1935	106.00	208.10	209.74	209.29	209.76	0.000924	1.03	194.43	280.71	0.28
Reyssouze	105.6	Crue 1935	106.00	206.57	209.43	208.81	209.61	0.003156	1.93	56.63	39.10	0.42
Reyssouze	105.5	Bridge										
Reyssouze	105.4	Crue 1935	106.00	206.57	209.30	208.81	209.52	0.004106	2.16	51.59	38.34	0.48
Reyssouze	105	Crue 1935	106.00	207.12	209.40	208.77	209.41	0.000268	0.70	351.30	546.29	0.16
Reyssouze	104	Crue 1935	106.00	206.52	209.36	208.82	209.37	0.000281	0.80	356.93	569.78	0.17
Reyssouze	103.8	Crue 1935	106.00	206.61	209.11	208.47	209.32	0.002502	2.14	54.14	37.89	0.49
Reyssouze	103.7	Bridge										
Reyssouze	103.6	Crue 1935	106.00	206.61	208.13	208.47	209.21					

Reach	River Sta	Profile	Q Total (m3/s)	Min Ch El (m)	W.S. Elev (m)	Crit W.S. (m)	E.G. Elev (m)	E.G. Slope (m/m)	Vel Chnl (m/s)	Flow Area (m2)	Top Width (m)	Froude # Chl
Reyssouze	101.6	Crue 1935	106.00	205.54	207.94	207.36	207.99	0.000515	1.35	172.96	483.78	0.30
Reyssouze	101.5	Bridge										
Reyssouze	101.4	Crue 1935	106.00	205.54	207.71	207.36	207.96	0.002010	2.51	79.33	318.21	0.59
Reyssouze	101	Crue 1935	106.00	205.34	206.99	206.99	207.15	0.005000	2.28	101.84	480.60	0.65
Reyssouze	100	Crue 1935	116.00	204.68	206.64	206.10	206.65	0.000246	0.51	421.64	623.36	0.14
Reyssouze	99.6	Crue 1935	116.00	204.42	206.47	205.80	206.54	0.003271	1.93	180.17	632.56	0.46
Reyssouze	99.5	Bridge										
Reyssouze	99.4	Crue 1935	116.00	204.42	205.64	205.82	206.44	0.038607	4.67	30.24	33.18	1.56
Reyssouze	99	Crue 1935	116.00	203.40	205.69	205.39	205.71	0.000957	1.06	268.52	678.57	0.29
Reyssouze	98	Crue 1935	116.00	203.18	204.89	204.82	204.96	0.004075	1.76	142.40	474.54	0.57
Reyssouze	97	Crue 1935	116.00	202.48	204.33	204.09	204.34	0.000685	0.97	334.10	784.94	0.25
Reyssouze	96	Crue 1935	116.00	202.00	204.04	203.78	204.05	0.000553	0.85	346.58	706.58	0.22
Reyssouze	95	Crue 1935	116.00	201.58	203.72	203.50	203.75	0.000931	1.13	267.45	601.04	0.29
Reyssouze	94.6	Crue 1935	116.00	201.42	203.42	203.28	203.48	0.000802	1.53	157.92	530.99	0.38
Reyssouze	94.5	Bridge										
Reyssouze	94.4	Crue 1935	116.00	201.42	203.19	203.26	203.46	0.002868	2.67	72.25	273.02	0.70
Reyssouze	94	Crue 1935	116.00	200.76	202.80	202.69	202.85	0.001703	1.55	195.50	474.69	0.39
Reyssouze	93	Crue 1935	116.00	200.31	202.12	202.04	202.18	0.002536	1.72	183.57	692.59	0.46
Reyssouze	92	Crue 1935	116.00	199.98	201.91	201.54	201.92	0.000463	0.78	370.24	966.29	0.20
Reyssouze	91.6	Crue 1935	116.00	198.77	201.54	201.42	201.58	0.001627	1.53	160.07	626.18	0.32
Reyssouze	91.5	Bridge										
Reyssouze	91.4	Crue 1935	116.00	198.77	201.42	201.42	201.54	0.003954	2.35	103.36	502.67	0.50
Reyssouze	91	Crue 1935	116.00	199.15	201.00	200.77	201.03	0.001160	1.22	216.39	554.43	0.32
Reyssouze	90	Crue 1935	116.00	198.44	200.68	200.25	200.70	0.000785	1.12	236.64	362.82	0.26
Reyssouze	89	Crue 1935	116.00	198.42	200.51	200.06	200.53	0.000673	1.04	268.02	752.40	0.25
Reyssouze	88	Crue 1935	116.00	198.94	199.91	199.64	200.00	0.003694	2.12	139.90	360.88	0.69
Reyssouze	87.8	Crue 1935	116.00	198.94	199.66	199.64	199.89	0.012350	3.27	64.54	281.25	1.23
Reyssouze	87.2	Crue 1935	116.00	196.90	199.74	199.40	199.75	0.000595	1.02	291.73	559.98	0.21
Reyssouze	87.1	Bridge										
Reyssouze	87	Crue 1935	116.00	196.90	199.73	199.40	199.75	0.000612	1.03	288.35	558.92	0.21
Reyssouze	86	Crue 1935	116.00	196.58	199.56	198.80	199.58	0.000413	0.96	313.22	495.26	0.20
Reyssouze	85.6	Crue 1935	116.00	197.24	199.19	198.45	199.38	0.002160	2.15	62.06	34.69	0.51
Reyssouze	85.5	Bridge										
Reyssouze	85.4	Crue 1935	116.00	197.24	199.07	198.44	199.28	0.002634	2.30	57.79	34.69	0.56
Reyssouze	85	Crue 1935	116.00	196.31	199.09	198.65	199.16	0.000995	1.54	256.99	353.35	0.32
Reyssouze	84	Crue 1935	116.00	196.52	198.81	198.31	198.86	0.001088	1.45	225.59	311.83	0.33
Reyssouze	83	Crue 1935	116.00	196.19	198.75	198.15	198.80	0.000918	1.41	280.96	440.53	0.30
Reyssouze	82	Crue 1935	116.00	195.92	198.47	198.29	198.54	0.001497	1.63	172.48	374.10	0.37
Reyssouze	81	Crue 1935	116.00	195.91	198.36	198.14	198.40	0.001084	1.26	212.91	409.12	0.31
Reyssouze	80	Crue 1935	116.00	196.04	198.09	197.68	198.10	0.000445	0.63	394.23	983.17	0.19
Reyssouze	79	Crue 1935	116.00	194.83	197.34	197.16	197.44	0.002072	1.90	156.45	420.31	0.43
Reyssouze	78	Crue 1935	116.00	194.43	196.99	196.63	197.02	0.000794	1.13	258.95	587.07	0.27
Reyssouze	77	Crue 1935	116.00	194.31	196.52	196.35	196.58	0.001954	1.67	193.34	632.24	0.42
Reyssouze	76.6	Crue 1935	116.00	194.99	196.37	196.00	196.39	0.000453	0.90	182.98	937.86	0.25
Reyssouze	76.5	Bridge										
Reyssouze	76.4	Crue 1935	116.00	194.99	196.31	196.10	196.38	0.001505	1.60	104.47	937.34	0.46
Reyssouze	76	Crue 1935	116.00	194.19	196.13	195.81	196.14	0.000904	0.93	349.90	1094.63	0.26
Reyssouze	75	Crue 1935	116.00	193.45	195.38	195.34	195.45	0.004290	2.13	158.10	686.43	0.57
Reyssouze	74.6	Crue 1935	116.00	193.32	195.14	195.01	195.18	0.001240	1.47	155.73	554.26	0.43
Reyssouze	74.5	Bridge										
Reyssouze	74.4	Crue 1935	116.00	193.32	195.10	195.02	195.16	0.001707	1.69	134.60	499.08	0.51
Reyssouze	73	Crue 1935	116.00	191.83	194.98	194.40	194.98	0.000137	0.43	588.63	849.68	0.11
Reyssouze	72	Crue 1935	116.00	192.14	194.91	194.44	194.91	0.000100	0.39	581.69	636.52	0.10
Reyssouze	71	Crue 1935	116.00	191.84	194.86	194.00	194.86	0.000116	0.51	493.02	522.74	0.11
Reyssouze	70	Crue 1935	116.00	191.47	194.81	193.63	194.82	0.000125	0.58	416.45	385.37	0.11
Reyssouze	69.7	Crue 1935	116.00	190.90	194.81	193.03	194.81	0.000032	0.29	945.10	939.89	0.06
Reyssouze	69.6	Crue 1935	75.00	191.80	194.75	193.34	194.80	0.000819	1.00	76.43	835.88	0.34
Reyssouze	69.5	Bridge										
Reyssouze	69.4	Crue 1935	75.00	191.80	192.86	193.34	194.62	0.044706	5.87	12.78	29.86	2.37
Reyssouze	69	Crue 1935	75.00	190.01	193.77	191.79	193.79	0.000195	0.72	171.97	982.61	0.14
Reyssouze	68	Crue 1935	75.00	190.82	193.74	192.37	193.75	0.000289	0.72	211.90	1662.99	0.17
Reyssouze	67	Crue 1935	75.00	190.31	193.56	191.89	193.58	0.000244	0.75	167.23	1530.43	0.16
Reyssouze	66.6	Crue 1935	75.00	190.99	193.26	192.40	193.40	0.001440	1.83	46.84	1575.69	0.43
Reyssouze	66.5	Bridge										
Reyssouze	66.4	Crue 1935	75.00	190.99	193.02	192.40	193.24	0.002438	2.25	38.17	1555.67	0.56
Reyssouze	66	Crue 1935	75.00	190.65	193.13	191.93	193.16	0.000706	1.02	119.01	1756.62	0.26
Reyssouze	65	Crue 1935	118.00	189.14	191.51	191.36	191.65	0.002637	2.02	110.88	1173.64	0.49
Reyssouze	64.6	Crue 1935	118.00	189.11	191.46	191.31	191.52	0.001668	1.53	163.76	1127.75	0.47
Reyssouze	64.5	Bridge										
Reyssouze	64.4	Crue 1935	118.00	189.11	191.31	191.31	191.48	0.003474	2.30	113.02	1033.76	0.68
Reyssouze	64	Crue 1935	118.00	188.72	190.95	190.94	191.13	0.003255	2.31	112.24	1003.43	0.55
Reyssouze	63	Crue 1935	118.00	188.09	189.85	189.20	189.88	0.000980	1.10	188.29	287.09	0.29
Reyssouze	62	Crue 1935	118.00	187.89	189.68	189.05	189.69	0.000236	0.53	542.50	1090.90	0.14
Reyssouze	61	Crue 1935	118.00	187.02	189.57	188.55	189.57	0.000283	0.67	432.57	798.30	0.16
Reyssouze	60.6	Crue 1935	118.00	186.66	189.33	188.62	189.50	0.001323	1.82	64.91	44.85	0.48
Reyssouze	60.5	Bridge										
Reyssouze	60.4	Crue 1935	118.00	186.66	189.14	188.62	189.36	0.001896	2.07	56.87	42.21	0.57
Reyssouze	60	Crue 1935	118.00	186.53	189.09	188.24	189.19	0.001217	1.53	123.36	175.73	0.35
Reyssouze	37	Crue 1935	121.00	182.48	185.71	184.66	185.73	0.000541	1.04	297.25	561.29	0.23
Reyssouze	36	Crue 1935	121.00	182.19	185.61	184.70	185.61	0.000291	0.70	410.45	639.75	0.16
Reyssouze	35	Crue 1935	121.00	182.28	185.54	184.02	185.54	0.000117	0.51	526.44	631.69	0.11
Reyssouze	34.6	Crue 1935	121.00	182.17	185.38	183.92	185.53	0.000585	1.71	73.32	32.75	0.34
Reyssouze	34.5	Bridge										
Reyssouze	34.4	Crue 1935	121.00	182.17	185.32	183.92	185.47	0.000628	1.76	71.51	32.36	0.36
Reyssouze	34	Crue 1935	121.00	181.91	185.41	184.40	185.42	0.000203	0.70	409.61	523.14	0.14
Reyssouze	33.6	Crue 1935	121.00	182.01	185.14	184.01	185.38	0.001009	2.16	55.91	22.94	0.44
Reyssouze	33.5	Bridge										
Reyssouze	33.4	Crue 1935	121.00	182.01	185.07	184.01	185.32	0.001105	2.23	54.21	22.79	0.46
Reyssouze	33	Crue 1935	121.00	181.69	185.17	184.20	185.20	0.000579	0.98	267.94	631.07	0.23
Reyssouze	32	Crue 1935	121.00	181.63	185.08	183.97	185.11	0.000646	0.96	239.55	651.72	0.24
Reyssouze	31	Crue 1935	143.00	181.86	185.06	183.45	185.07	0.000187	0.68	416.08	617.23	0.14
Reyssouze	30	Crue 1935	143.00	181.63	185.05	184.29	185.05	0.000187	0.57	478.45	523.80	0.13
Reyssouze	29.6	Crue 1935	143.00	182.37	184.91	183.68	185.03	0.000640	1.58			

HEC-RAS Plan: Q1935-2 Profile: Crue 1935 (Continued)

Reach	River Sta	Profile	Q Total (m3/s)	Min Ch El (m)	W.S. Elev (m)	Crit W.S. (m)	E.G. Elev (m)	E.G. Slope (m/m)	Vel Chnl (m/s)	Flow Area (m2)	Top Width (m)	Froude # Chl
Reyssouze	25	Crue 1935	143.00	180.26	183.91	182.39	183.93	0.000307	0.95	339.13	427.81	0.18
Reyssouze	24	Crue 1935	143.00	179.85	183.78	182.35	183.81	0.000330	0.96	355.43	519.60	0.19
Reyssouze	23	Crue 1935	143.00	180.14	183.73	182.37	183.74	0.000146	0.64	430.72	321.47	0.12
Reyssouze	22	Crue 1935	143.00	179.83	183.71	182.48	183.72	0.000208	0.73	414.38	382.87	0.13
Reyssouze	21.6	Crue 1935	143.00	180.61	183.67	182.38	183.71	0.000600	1.05	172.89	245.31	0.28
Reyssouze	21.5	Bridge										
Reyssouze	21.4	Crue 1935	143.00	180.61	183.66	182.38	183.70	0.000622	1.07	169.90	243.31	0.29
Reyssouze	21	Crue 1935	143.00	178.83	183.62	180.90	183.64	0.000149	0.70	379.80	342.66	0.13
Reyssouze	20	Crue 1935	143.00	178.65	183.60	180.87	183.61	0.000063	0.53	601.04	438.05	0.08

HEC-RAS Plan: Q1935-normal River: Reyssouze Reach: bief 69.6 Profile: Crue 1935

Reach	River Sta	Profile	Q Total (m3/s)	Min Ch El (m)	W.S. Elev (m)	Crit W.S. (m)	E.G. Elev (m)	E.G. Slope (m/m)	Vel Chnl (m/s)	Flow Area (m2)	Top Width (m)	Froude # Chl
bief 69.6	69.7	Crue 1935	41.00	190.90	194.80	192.18	194.80	0.000004	0.10	937.76	939.89	0.02
bief 69.6	69.6	Crue 1935	41.00	191.97	194.80	193.77	194.80	0.000037	0.13	315.31	897.28	0.07
bief 69.6	69.5	Bridge										
bief 69.6	69.4	Crue 1935	41.00	191.97	194.80	193.77	194.80	0.000037	0.13	314.80	896.59	0.07
bief 69.6	69	Crue 1935	41.00	192.55	194.61	194.40	194.77	0.007485	1.88	23.12	1820.18	0.72
bief 69.6	68	Crue 1935	41.00	191.15	192.91	192.91	192.96	0.023774	1.10	40.86	1044.15	0.99
bief 69.6	67	Crue 1935	41.00	191.18	192.17	192.17	192.27	0.021195	1.46	28.14	1221.32	1.02
bief 69.6	66.6	Crue 1935	41.00	189.25	191.09	190.29	191.12	0.000451	0.80	51.13	51.44	0.23
bief 69.6	66.5	Bridge										
bief 69.6	66.4	Crue 1935	41.00	189.25	191.08	190.29	191.12	0.000459	0.81	50.84	51.23	0.24
bief 69.6	66	Crue 1935	41.00	189.29	191.09	190.41	191.10	0.001039	0.30	138.97	782.14	0.22
bief 69.6	65	Crue 1935	41.00	186.91	190.56	189.73	190.57	0.000290	0.48	193.38	635.10	0.15
bief 69.6	64.6	Crue 1935	41.00	188.84	190.52	189.91	190.54	0.000927	0.66	77.78	335.73	0.32
bief 69.6	64.4	Crue 1935	41.00	188.84	190.51	189.91	190.53	0.000971	0.74	74.32	323.87	0.29
bief 69.6	64	Crue 1935	41.00	187.98	190.14	189.65	190.37	0.004246	2.15	20.29	539.12	0.60
bief 69.6	63	Crue 1935	41.00	188.44	190.00	190.00	190.11	0.009373	1.59	36.05	171.37	0.77
bief 69.6	62	Crue 1935	41.00	187.89	189.63	188.83	189.63	0.000039	0.21	469.29	937.25	0.06

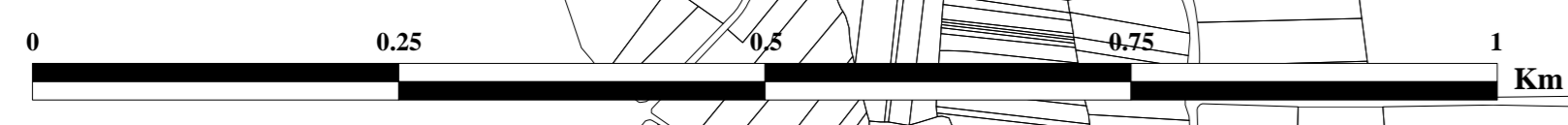
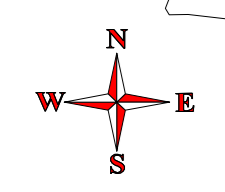
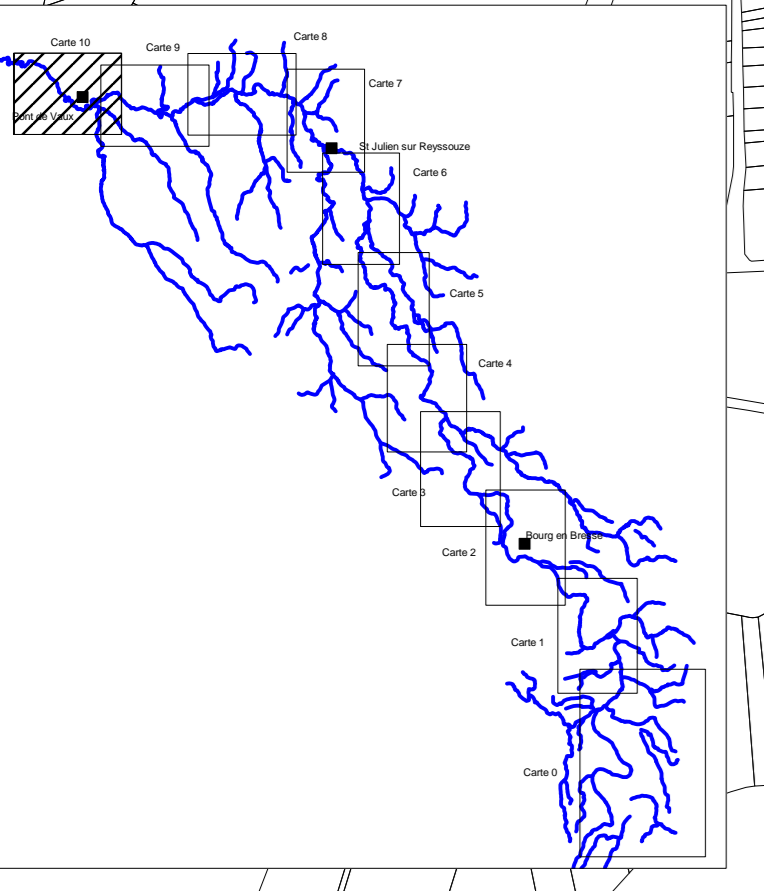
River	Reach	River Sta	Profile	Q Total (m3/s)	Min Ch El (m)	W.S. Elev (m)	Crit W.S. (m)	E.G. Elev (m)	E.G. Slope (m/m)	Vel Chnl (m/s)	Flow Area (m2)	Top Width (m)	Froude # Chl
Reyssouzet	Reyssouzet	43	Crue 1935	23.30	182.63	185.49	183.79	185.53	0.000650	0.86	26.99	18.91	0.23
Reyssouzet	Reyssouzet	42	Crue 1935	23.30	183.11	185.33	184.25	185.42	0.001468	1.37	22.36	80.24	0.33
Reyssouzet	Reyssouzet	41	Crue 1935	23.30	182.91	185.37	184.23	185.38	0.000180	0.49	112.89	278.35	0.12
Reyssouzet	Reyssouzet	40	Crue 1935	23.30	182.95	185.35	184.38	185.36	0.000371	0.60	93.34	255.41	0.16
Reyssouzet	Reyssouzet	33	Crue 1935	23.30	182.60	184.89	184.38	185.06	0.004364	1.90	18.18	131.09	0.53
Reyssouzet	Reyssouzet	32	Crue 1935	23.30	182.61	184.94	183.95	184.95	0.000218	0.47	79.73	279.30	0.13
Reyssouzet	Reyssouzet	31	Crue 1935	23.30	181.86	184.94	182.66	184.94	0.000007	0.13	346.16	594.44	0.03
Devora	Devora	618.1	Crue 1935	9.00	225.77	227.80	226.67	227.83	0.000628	0.79	11.33	8.44	0.22
Devora	Devora	618	Crue 1935	9.00	225.77	227.80	226.67	227.83	0.000629	0.79	11.33	8.44	0.22
Devora	Devora	617.5	Bridge										
Devora	Devora	617	Crue 1935	9.00	225.77	227.76	226.67	227.79	0.000684	0.82	10.98	8.33	0.23
Devora	Devora	615	Crue 1935	9.00	225.17	227.78	226.11	227.78	0.000010	0.13	107.88	106.26	0.03
Devora	Devora	614	Crue 1935	9.00	225.11	227.78	225.98	227.78	0.000010	0.13	112.95	102.16	0.03
Devora	Devora	613	Crue 1935	9.00	225.06	227.77	225.91	227.77	0.000040	0.26	61.84	81.20	0.06
Devora	Devora	612	Crue 1935	9.00	224.95	227.77	225.75	227.77	0.000043	0.27	50.17	48.58	0.06
Devora	Devora	611.6	Crue 1935	9.00	224.98	227.75	226.00	227.77	0.000233	0.52	18.24	13.45	0.13
Devora	Devora	611.5	Bridge										
Devora	Devora	611.4	Crue 1935	9.00	224.91	227.49	225.93	227.51	0.000357	0.60	15.00	9.52	0.15
Devora	Devora	610	Crue 1935	9.00	224.81	227.49	225.53	227.50	0.000054	0.32	33.17	65.43	0.07
Devora	Devora	609	Crue 1935	9.00	224.86	227.49	225.53	227.50	0.000045	0.30	39.42	63.90	0.07
Devora	Devora	607.6	Crue 1935	9.00	224.82	227.48	225.84	227.49	0.000183	0.47	23.08	22.72	0.11
Devora	Devora	607.5	Bridge										
Devora	Devora	607.4	Crue 1935	9.00	224.77	227.40	225.80	227.41	0.000215	0.50	21.43	22.72	0.12
Devora	Devora	607	Crue 1935	9.00	224.71	227.40	225.40	227.40	0.000089	0.32	35.16	73.72	0.09
Devora	Devora	606	Crue 1935	9.00	224.41	227.40	225.13	227.40	0.000019	0.20	83.29	102.62	0.04
Devora	Devora	603.6	Crue 1935	9.00	224.16	227.40	224.83	227.40	0.000010	0.15	90.13	74.50	0.03
Devora	Devora	603.5	Bridge										
Devora	Devora	603.4	Crue 1935	9.00	224.16	227.40	224.83	227.40	0.000010	0.15	90.11	74.50	0.03
Devora	Devora	600.6	Crue 1935	9.00	224.06	227.39	224.80	227.39	0.000027	0.24	47.79	26.67	0.05
Devora	Devora	600.5	Bridge										
Devora	Devora	600.4	Crue 1935	9.00	224.06	227.39	224.80	227.39	0.000027	0.24	47.76	26.67	0.05
Devora	Devora	317	Crue 1935	9.00	223.70	227.39	224.15	227.39	0.000006	0.14	65.53	33.40	0.03

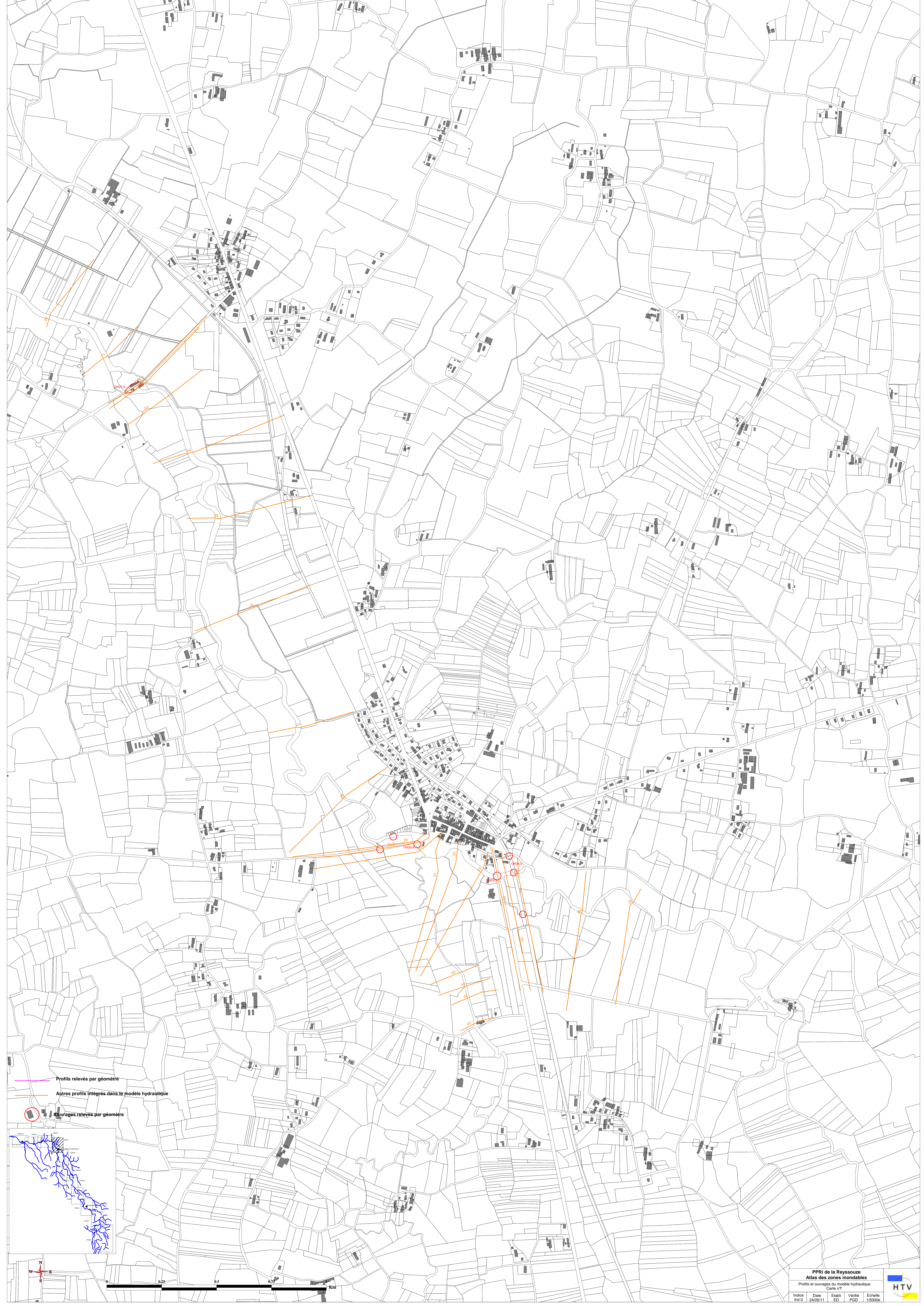
Reach	River Sta	Profile	Q Total (m3/s)	Min Ch El (m)	W.S. Elev (m)	Crit W.S. (m)	E.G. Elev (m)	E.G. Slope (m/m)	Vel Chnl (m/s)	Flow Area (m2)	Top Width (m)	Froude # Chl
Canal de l'Oise	759	Crue 1935	37.00	225.75	229.49	227.29	229.50	0.000101	0.62	160.86	165.16	0.11
Canal de l'Oise	351.6	Crue 1935	37.00	226.91	229.43	228.21	229.49	0.000532	1.28	81.72	95.00	0.26
Canal de l'Oise	351.5	Crue 1935	37.00	227.22	229.42	228.73	229.49	0.000698	1.39	78.48	95.00	0.30
Canal de l'Oise	351.4	Crue 1935	37.00	227.22	229.42	228.71	229.49	0.000699	1.39	78.44	95.00	0.30
Canal de l'Oise	351.39	Crue 1935	37.00	226.91	229.43	228.20	229.49	0.000537	1.29	81.34	95.00	0.26
Canal de l'Oise	351.3	Crue 1935	37.00	226.91	229.43	228.20	229.49	0.000540	1.29	81.13	95.00	0.26
Canal de l'Oise	351	Crue 1935	37.00	226.85	229.43	228.34	229.48	0.000527	1.14	86.18	91.34	0.25
Canal de l'Oise	350	Crue 1935	37.00	226.59	229.41	228.19	229.44	0.000373	1.02	116.59	138.21	0.21
Canal de l'Oise	349	Crue 1935	37.00	226.53	229.27	228.13	229.41	0.001354	1.69	22.68	22.33	0.39
Canal de l'Oise	348.5	Bridge										
Canal de l'Oise	348	Crue 1935	37.00	226.53	229.02	228.13	229.22	0.001991	1.95	18.97	10.84	0.47
Canal de l'Oise	345	Crue 1935	37.00	226.20	228.95	227.83	229.00	0.000543	1.17	47.01	67.41	0.25
Canal de l'Oise	344	Crue 1935	37.00	226.15	228.75	227.60	228.91	0.001568	1.79	20.70	9.86	0.39
Canal de l'Oise	343	Crue 1935	37.00	226.13	228.73	227.53	228.91	0.001715	1.88	19.67	8.20	0.39
Canal de l'Oise	342.5	Bridge										
Canal de l'Oise	342	Crue 1935	37.00	226.13	228.57	227.54	228.77	0.002080	2.02	18.36	8.13	0.43
Canal de l'Oise	341	Crue 1935	37.00	225.93	228.69	227.70	228.70	0.000183	0.70	85.89	108.35	0.15
Canal de l'Oise	339.6	Crue 1935	37.00	225.88	228.49	227.50	228.67	0.001492	1.91	21.05	28.43	0.42
Canal de l'Oise	339.5	Bridge										
Canal de l'Oise	339.4	Crue 1935	37.00	225.88	228.45	227.51	228.64	0.001594	1.95	20.40	28.43	0.43
Canal de l'Oise	338	Crue 1935	37.00	225.85	228.58	227.40	228.58	0.000103	0.52	119.24	168.47	0.11
Canal de l'Oise	337	Crue 1935	37.00	225.73	228.57	227.58	228.57	0.000054	0.40	138.43	128.78	0.08
Canal de l'Oise	336.6	Crue 1935	37.00	225.72	228.43	227.20	228.56	0.001092	1.59	23.23	10.54	0.34
Canal de l'Oise	336.5	Bridge										
Canal de l'Oise	336.4	Crue 1935	37.00	225.72	228.38	227.20	228.51	0.001175	1.63	22.64	10.51	0.36
Canal de l'Oise	335.6	Crue 1935	37.00	225.72	228.37	227.24	228.51	0.001061	1.67	22.58	11.21	0.36
Canal de l'Oise	335.5	Bridge										
Canal de l'Oise	335.4	Crue 1935	37.00	225.72	228.34	227.24	228.48	0.001113	1.70	22.24	11.21	0.37
Canal de l'Oise	331	Crue 1935	37.00	225.25	228.01	226.49	228.10	0.001229	1.29	28.64	20.09	0.35
Canal de l'Oise	330.5	Bridge										
Canal de l'Oise	330	Crue 1935	37.00	225.25	227.78	226.49	227.90	0.002143	1.54	24.06	20.09	0.45
Canal de l'Oise	326	Crue 1935	37.00	224.66	227.54	226.24	227.60	0.000557	1.13	34.87	23.64	0.26
Canal de l'Oise	325.5	Bridge										
Canal de l'Oise	325	Crue 1935	37.00	224.66	227.42	226.23	227.50	0.000705	1.22	32.12	23.64	0.29
Canal de l'Oise	321	Crue 1935	37.00	224.03	227.43	225.28	227.44	0.000056	0.47	115.22	86.00	0.09
Canal de l'Oise	320.5	Bridge										
Canal de l'Oise	320	Crue 1935	37.00	224.03	227.43	225.28	227.44	0.000068	0.51	114.90	86.00	0.09
Canal de l'Oise	319	Crue 1935	37.00	224.26	227.43	225.66	227.43	0.000056	0.45	123.37	115.41	0.09
Canal de l'Oise	318	Crue 1935	37.00	223.89	227.42	225.30	227.43	0.000033	0.38	108.16	125.60	0.07
Canal de l'Oise	317	Crue 1935	46.00	223.70	227.39	224.83	227.42	0.000113	0.72	65.55	33.40	0.13
Canal de l'Oise	316	Crue 1935	62.00	223.76	227.35	224.96	227.41	0.000195	1.09	64.85	98.00	0.18
Canal de l'Oise	315.5	Bridge										
Canal de l'Oise	315	Crue 1935	62.00	223.76	226.71	224.96	226.81	0.000415	1.39	44.46	15.11	0.26
Canal de l'Oise	311	Crue 1935	62.00	223.15	226.74	224.28	226.76	0.000075	0.62	108.91	41.13	0.11
Canal de l'Oise	310.5	Bridge										
Canal de l'Oise	310	Crue 1935	62.00	223.15	226.46	224.28	226.48	0.000108	0.70	93.00	32.93	0.13
Canal de l'Oise	306	Crue 1935	62.00	223.14	226.34	224.81	226.45	0.000712	1.50	43.17	21.56	0.31
Bras de Challes	301.4	Crue 1935	39.00	222.82	225.68	224.22	225.73	0.000389	1.01	38.93	21.60	0.23
Bras de Challes	300	Crue 1935	39.00	222.91	225.41	224.51	225.69	0.002103	2.40	20.65	22.33	0.49
Bras de Challes	299.5	Bridge										
Bras de Challes	299	Crue 1935	39.00	222.91	225.16	224.51	225.55	0.003292	2.80	15.54	18.24	0.60
Bras de Challes	228	Crue 1935	39.00	222.49	225.28	224.06	225.38	0.000904	1.35	28.99	17.16	0.33
Bras de Challes	227	Crue 1935	39.00	222.41	225.12	223.99	225.27	0.001380	1.71	22.87	11.83	0.39
Bras de Challes	226.6	Crue 1935	39.00	222.29	225.11	223.79	225.23	0.000694	1.66	27.17	13.31	0.32
Bras de Challes	226.5	Bridge										
Bras de Challes	226.4	Crue 1935	39.00	222.29	224.86	223.79	225.02	0.000996	1.87	23.91	12.69	0.38
Bras de Challes	226	Crue 1935	39.00	221.99	224.88	223.80	225.00	0.001009	1.56	25.88	17.17	0.35
Bras de Challes	225	Crue 1935	39.00	222.13	224.79	223.61	224.89	0.000908	1.42	27.49	14.20	0.33
Bras de Challes	224.6	Crue 1935	39.00	222.07	224.76	223.44	224.88	0.000728	1.60	26.86	12.68	0.32
Bras de Challes	224.5	Bridge										
Bras de Challes	224.4	Crue 1935	39.00	222.07	224.55	223.44	224.69	0.000984	1.76	24.25	12.30	0.36
Bras de Challes	224	Crue 1935	39.00	222.14	224.56	223.48	224.68	0.001179	1.58	24.67	13.77	0.38
Bras de Challes	223	Crue 1935	39.00	221.88	224.50	223.44	224.55	0.000533	1.17	38.75	324.73	0.26
Bras de Challes	222	Crue 1935	33.00	221.83	224.41	223.27	224.51	0.000945	1.39	23.73	13.53	0.34
Bras de Challes	221.6	Crue 1935	33.00	221.73	224.40	223.17	224.50	0.000893	1.39	23.80	12.45	0.32
Bras de Challes	221.5	Bridge										
Bras de Challes	221.4	Crue 1935	33.00	221.73	224.05	223.17	224.20	0.001542	1.69	19.58	11.66	0.41
Bras de Challes	221	Crue 1935	33.00	221.81	224.04	223.19	224.18	0.001510	1.66	19.90	12.29	0.42
Bras de Challes	220	Crue 1935	33.00	221.47	223.92	223.04	224.03	0.001034	1.61	26.15	34.89	0.35
Bras de Challes	219.6	Crue 1935	33.00	221.61	223.90	222.99	224.02	0.000998	1.74	24.08	20.00	0.37
Bras de Challes	219.5	Bridge										
Bras de Challes	219.4	Crue 1935	33.00	221.61	223.77	222.99	223.93	0.001304	1.91	21.61	19.11	0.42
Bras de Challes	219	Crue 1935	33.00	221.46	223.78	222.82	223.90	0.001476	1.57	28.94	89.24	0.38
Bras de Challes	218.6	Crue 1935	33.00	221.46	223.69	222.87	223.89	0.001759	2.02	17.80	10.87	0.45
Bras de Challes	218.5	Bridge										
Bras de Challes	218.4	Crue 1935	33.00	221.46	223.54	222.87	223.78	0.002312	2.20	16.18	10.87	0.51
Bras de Challes	218.3	Crue 1935	33.00	221.12	223.49	222.74	223.76	0.001862	2.34	15.48	8.39	0.51
Bras de Challes	218.2	Bridge										
Bras de Challes	218.1	Crue 1935	33.00	221.12	223.42	222.74	223.70	0.002115	2.43	14.83	8.30	0.54
Bras de Challes	218	Crue 1935	33.00	221.40	223.36	222.80	223.56	0.002673	2.00	16.54	12.20	0.55
Bras de Challes	217	Crue 1935	33.00	221.23	223.25	222.60	223.43	0.002178	1.86	17.76	12.45	0.50
Bras de Challes	216	Crue 1935	33.00	220.97	223.08	222.33	223.22	0.001739	1.69	19.50	13.44	0.45
Bras de Challes	215	Crue 1935	33.00	220.82	222.94	222.21	223.11	0.001857	1.81	18.34	12.48	0.46
Bras de Challes	214	Crue 1935	33.00	220.58	222.80	221.96	222.95	0.001454	1.69	19.98	13.96	0.42
Bras de Challes	213	Crue 1935	33.00	220.29	222.70	221.67	222.82	0.000911	1.53	22.76	14.67	0.34
Bras de Challes	212.6	Crue 1935	39.00	220.12	222.57	221.63	222.76	0.001840	1.95	20.04	10.41	0.45
Bras de Challes	212.5	Bridge										
Bras de Challes	212.4	Crue 1935	39.00	220.12	222.38	221.63	222.62	0.002429	2.15	18.14	10.08	0.51
Bras de Challes	212	Crue 1935	39.00	220.00	222.34	221.60	222.55	0.001837	2.05	19.82	125.95	0.47
Bras de Challes	211	Crue 1935	39.00	219.96	222.23	221.51	222.38	0.001491	1.83	31.63	213.14	0.43
Bras de Challes	210	Crue 1935	39.00	219.77	222.10	221.31	222.20	0.000971	1.54	41.04	95.15	0.35
Bras de Challes	209	Crue 1935	39.00	219.59	221.85	221.12	222.05	0.001784	2.03	20.04	13.03	0.47
Bras de Challes	208	Crue 1935	39.00	219.27	221.58	220.81	221.78	0.001689	2.00	20.36	14.60	0.46
Bras de Challes	207	Crue 1935	39.00	219.20	221.47	220.72	221.65	0.001676	1.95	21.04	14.88	0.46
Bras de Challes	206	Crue 1935	39.00	219.04	221.39	220.56	221.54					

Reach	River Sta	Profile	Q Total (m3/s)	Min Ch El (m)	W.S. Elev (m)	Crit W.S. (m)	E.G. Elev (m)	E.G. Slope (m/m)	Vel Chnl (m/s)	Flow Area (m2)	Top Width (m)	Froude # Chl
Bras de Challes	301.4	Crue 1935	39.00	222.82	225.68	224.22	225.73	0.000389	1.01	38.93	21.60	0.23
Bras de Challes	300	Crue 1935	39.00	222.91	225.41	224.51	225.69	0.002103	2.40	20.65	22.33	0.49
Bras de Challes	299.5		Bridge									
Bras de Challes	299	Crue 1935	39.00	222.91	225.16	224.51	225.55	0.003292	2.80	15.54	18.24	0.60
Bras de Challes	228	Crue 1935	39.00	222.49	225.28	224.06	225.38	0.000904	1.35	28.99	17.16	0.33
Bras de Challes	227	Crue 1935	39.00	222.41	225.12	223.99	225.27	0.001380	1.71	22.87	11.83	0.39
Bras de Challes	226.6	Crue 1935	39.00	222.29	225.11	223.79	225.23	0.000694	1.66	27.17	13.31	0.32
Bras de Challes	226.5		Bridge									
Bras de Challes	226.4	Crue 1935	39.00	222.29	224.86	223.79	225.02	0.000996	1.87	23.91	12.69	0.38
Bras de Challes	226	Crue 1935	39.00	221.99	224.88	223.80	225.00	0.001009	1.56	25.88	17.17	0.35
Bras de Challes	225	Crue 1935	39.00	222.13	224.79	223.61	224.89	0.000908	1.42	27.49	14.20	0.33
Bras de Challes	224.6	Crue 1935	39.00	222.07	224.76	223.44	224.88	0.000728	1.60	26.86	12.68	0.32
Bras de Challes	224.5		Bridge									
Bras de Challes	224.4	Crue 1935	39.00	222.07	224.55	223.44	224.69	0.000984	1.76	24.25	12.30	0.36
Bras de Challes	224	Crue 1935	39.00	222.14	224.56	223.48	224.68	0.001179	1.58	24.67	13.77	0.38
Bras de Challes	223	Crue 1935	39.00	221.88	224.50	223.44	224.55	0.000533	1.17	38.75	324.73	0.26
Bras de Challes	222	Crue 1935	33.00	221.83	224.41	223.27	224.51	0.000945	1.39	23.73	13.53	0.34
Bras de Challes	221.6	Crue 1935	33.00	221.73	224.40	223.17	224.50	0.000893	1.39	23.80	12.45	0.32
Bras de Challes	221.5		Bridge									
Bras de Challes	221.4	Crue 1935	33.00	221.73	224.05	223.17	224.20	0.001542	1.69	19.58	11.66	0.41
Bras de Challes	221	Crue 1935	33.00	221.81	224.04	223.19	224.18	0.001510	1.66	19.90	12.29	0.42
Bras de Challes	220	Crue 1935	33.00	221.47	223.92	223.04	224.03	0.001034	1.61	26.15	34.89	0.35
Bras de Challes	219.6	Crue 1935	33.00	221.61	223.90	222.99	224.02	0.000998	1.74	24.08	20.00	0.37
Bras de Challes	219.5		Bridge									
Bras de Challes	219.4	Crue 1935	33.00	221.61	223.77	222.99	223.93	0.001304	1.91	21.61	19.11	0.42
Bras de Challes	219	Crue 1935	33.00	221.46	223.78	222.82	223.90	0.001476	1.57	28.94	89.24	0.38
Bras de Challes	218.6	Crue 1935	33.00	221.46	223.69	222.87	223.89	0.001759	2.02	17.80	10.87	0.45
Bras de Challes	218.5		Bridge									
Bras de Challes	218.4	Crue 1935	33.00	221.46	223.54	222.87	223.78	0.002312	2.20	16.18	10.87	0.51
Bras de Challes	218.3	Crue 1935	33.00	221.12	223.49	222.74	223.76	0.001862	2.34	15.48	8.39	0.51
Bras de Challes	218.2		Bridge									
Bras de Challes	218.1	Crue 1935	33.00	221.12	223.42	222.74	223.70	0.002115	2.43	14.83	8.30	0.54
Bras de Challes	218	Crue 1935	33.00	221.40	223.36	222.80	223.56	0.002673	2.00	16.54	12.20	0.55
Bras de Challes	217	Crue 1935	33.00	221.23	223.25	222.60	223.43	0.002178	1.86	17.76	12.45	0.50
Bras de Challes	216	Crue 1935	33.00	220.97	223.08	222.33	223.22	0.001739	1.69	19.50	13.44	0.45
Bras de Challes	215	Crue 1935	33.00	220.82	222.94	222.21	223.11	0.001857	1.81	18.34	12.48	0.46
Bras de Challes	214	Crue 1935	33.00	220.58	222.80	221.96	222.95	0.001454	1.69	19.98	13.96	0.42
Bras de Challes	213	Crue 1935	33.00	220.29	222.70	221.67	222.82	0.000911	1.53	22.76	14.67	0.34
Bras de Challes	212.6	Crue 1935	39.00	220.12	222.57	221.63	222.76	0.001840	1.95	20.04	10.41	0.45
Bras de Challes	212.5		Bridge									
Bras de Challes	212.4	Crue 1935	39.00	220.12	222.38	221.63	222.62	0.002429	2.15	18.14	10.08	0.51
Bras de Challes	212	Crue 1935	39.00	220.00	222.34	221.60	222.55	0.001837	2.05	19.82	125.95	0.47
Bras de Challes	211	Crue 1935	39.00	219.96	222.23	221.51	222.38	0.001491	1.83	31.63	213.14	0.43
Bras de Challes	210	Crue 1935	39.00	219.77	222.10	221.31	222.20	0.000971	1.54	41.04	95.15	0.35
Bras de Challes	209	Crue 1935	39.00	219.59	221.85	221.12	222.05	0.001784	2.03	20.04	13.03	0.47
Bras de Challes	208	Crue 1935	39.00	219.27	221.58	220.81	221.78	0.001689	2.00	20.36	14.60	0.46
Bras de Challes	207	Crue 1935	39.00	219.20	221.47	220.72	221.65	0.001676	1.95	21.04	14.88	0.46
Bras de Challes	206	Crue 1935	39.00	219.04	221.39	220.56	221.54	0.001255	1.70	23.35	14.11	0.40
Bras de Challes	205.5		Bridge									
Bras de Challes	205	Crue 1935	39.00	219.04	220.15	220.56	221.41	0.032279	4.97	7.85	9.84	1.78
Bras de Challes	132.6	Crue 1935	39.00	217.93	219.45	219.18	219.80	0.005002	2.62	14.90	11.33	0.73
Canal de l'Oise	759	Crue 1935	35.50	225.75	229.42	227.25	229.44	0.000104	0.62	153.69	164.69	0.12
Canal de l'Oise	351.6	Crue 1935	35.50	226.91	229.36	228.17	229.42	0.000580	1.31	74.94	95.00	0.27
Canal de l'Oise	351.5	Crue 1935	35.50	227.22	229.35	228.48	229.42	0.000783	1.44	71.45	95.00	0.31
Canal de l'Oise	351.4	Crue 1935	35.50	227.22	229.35	228.46	229.42	0.000784	1.44	71.40	95.00	0.31
Canal de l'Oise	351.39	Crue 1935	35.50	226.91	229.36	228.17	229.42	0.000588	1.32	74.44	95.00	0.27
Canal de l'Oise	351.3	Crue 1935	35.50	226.91	229.35	228.17	229.42	0.000591	1.32	74.21	95.00	0.27
Canal de l'Oise	351	Crue 1935	35.50	226.85	229.36	228.30	229.41	0.000580	1.17	79.62	91.34	0.26
Canal de l'Oise	350	Crue 1935	35.50	226.59	229.33	228.14	229.37	0.000422	1.06	106.03	138.21	0.23
Canal de l'Oise	349	Crue 1935	35.50	226.53	229.19	228.10	229.34	0.001426	1.70	20.98	22.21	0.40
Canal de l'Oise	348.5		Bridge									
Canal de l'Oise	348	Crue 1935	35.50	226.53	228.97	228.09	229.16	0.001974	1.92	18.45	10.69	0.47
Canal de l'Oise	345	Crue 1935	35.50	226.20	228.86	227.79	228.92	0.000658	1.25	41.68	62.14	0.28
Canal de l'Oise	344	Crue 1935	35.50	226.15	228.67	227.56	228.83	0.001609	1.78	19.91	9.76	0.40
Canal de l'Oise	343	Crue 1935	35.50	226.13	228.65	227.50	228.82	0.001733	1.87	19.02	8.17	0.39
Canal de l'Oise	342.5		Bridge									
Canal de l'Oise	342	Crue 1935	35.50	226.13	228.50	227.50	228.71	0.002070	1.99	17.86	8.11	0.43
Canal de l'Oise	341	Crue 1935	35.50	225.93	228.62	227.68	228.64	0.000215	0.74	78.53	107.13	0.16
Canal de l'Oise	339.6	Crue 1935	35.50	225.88	228.42	227.46	228.60	0.001582	1.92	19.67	28.43	0.43
Canal de l'Oise	339.5		Bridge									
Canal de l'Oise	339.4	Crue 1935	35.50	225.88	228.39	227.47	228.58	0.001653	1.95	19.24	28.43	0.43
Canal de l'Oise	338	Crue 1935	35.50	225.85	228.51	227.37	228.52	0.000112	0.53	109.39	150.29	0.11
Canal de l'Oise	337	Crue 1935	35.50	225.73	228.51	227.56	228.51	0.000059	0.41	130.49	126.27	0.08
Canal de l'Oise	336.6	Crue 1935	35.50	225.72	228.37	227.17	228.50	0.001085	1.57	22.62	10.51	0.34
Canal de l'Oise	336.5		Bridge									
Canal de l'Oise	336.4	Crue 1935	35.50	225.72	228.32	227.17	228.46	0.001159	1.61	22.11	10.47	0.35
Canal de l'Oise	335.6	Crue 1935	35.50	225.72	228.31	227.21	228.45	0.001060	1.65	22.01	11.21	0.36
Canal de l'Oise	335.5		Bridge									
Canal de l'Oise	335.4	Crue 1935	35.50	225.72	228.29	227.21	228.43	0.001104	1.67	21.73	11.21	0.37
Canal de l'Oise	331	Crue 1935	35.50	225.25	227.96	226.45	228.04	0.001281	1.29	27.54	20.09	0.35
Canal de l'Oise	330.5		Bridge									
Canal de l'Oise	330	Crue 1935	35.50	225.25	227.76	226.45	227.88	0.002097	1.50	23.60	20.09	0.44
Canal de l'Oise	326	Crue 1935	35.50	224.66	227.53	226.21	227.59	0.000522	1.09	34.64	23.64	0.25
Canal de l'Oise	325.5		Bridge									
Canal de l'Oise	325	Crue 1935	35.50	224.66	227.42	226.20	227.49	0.000650	1.17	32.10	23.64	0.28
Canal de l'Oise	321	Crue 1935	35.50	224.03	227.43	225.25	227.44	0.000052	0.45	115.10	86.00	0.08
Canal de l'Oise	320.5		Bridge									
Canal de l'Oise	320	Crue 1935	35.50	224.03	227.43	225.26	227.44	0.000063	0.49	114.80	86.00	0.09
Canal de l'Oise	319	Crue 1935	35.50	224.26	227.43	225.64	227.43	0.000052	0.43	123.27	115.41	0.09
Canal de l'Oise	318	Crue 1935	35.50	223.89	227.42	225.29	227.43	0.000030	0.37	108.14	125.60	0.07
Canal de l'Oise	317	Crue 1935	43.00	223.70	227.39	224.79	227.42	0.000098	0.67	65.64	33.40	0.12
Canal de l'Oise	316	Crue 1935	62.00	223.76	227.35	224.96	227.41	0.000195	1.09	64.85	98.00	0.18
Canal de l'Oise	315.5		Bridge									
Canal de l'Oise	315	Crue 1935	62.00	223.76	226.71	224.96	226.81	0.000415	1.39	44.46	15.11	0.26
Canal de l'Oise	311	Crue 1935	62.00	223.15	226.74	224.28	226.76	0.000075				

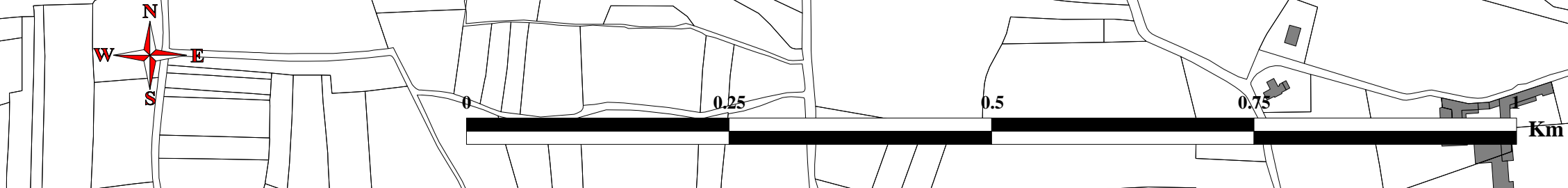
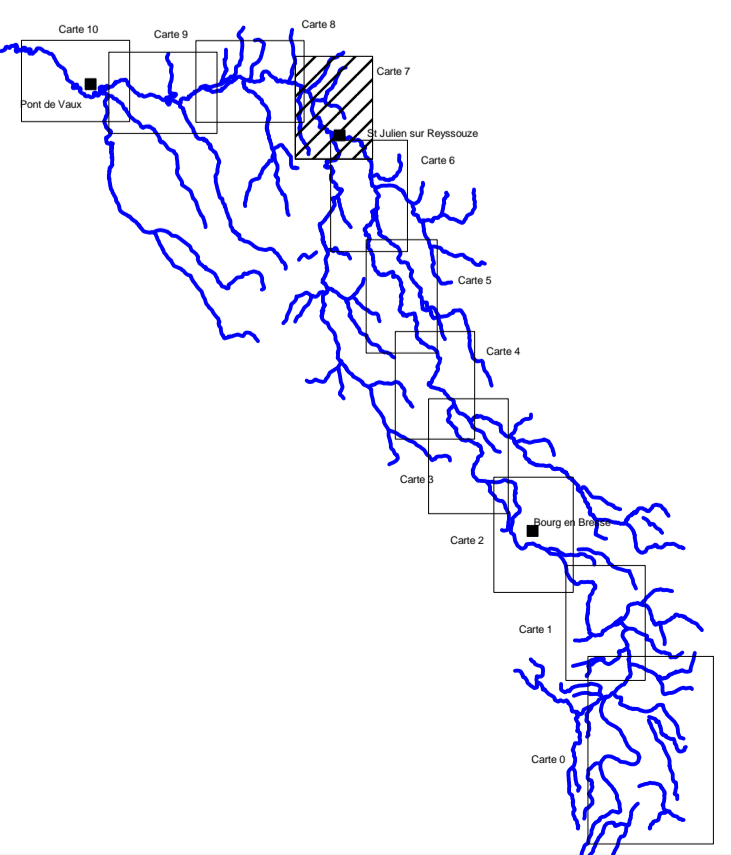


— Profils relevés par géomètre
— Autres profils intégrés dans le modèle hydraulique
○ Ouvrages relevés par géomètre





— Profils relevés par géomètre
— Autres profils intégrés dans le modèle hydraulique
● Ouvrages relevés par géomètre

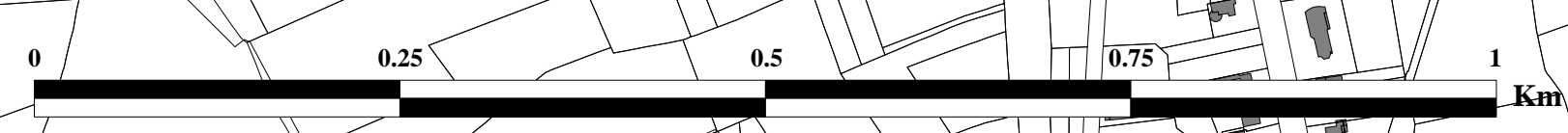
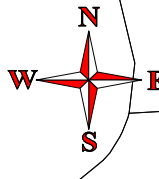
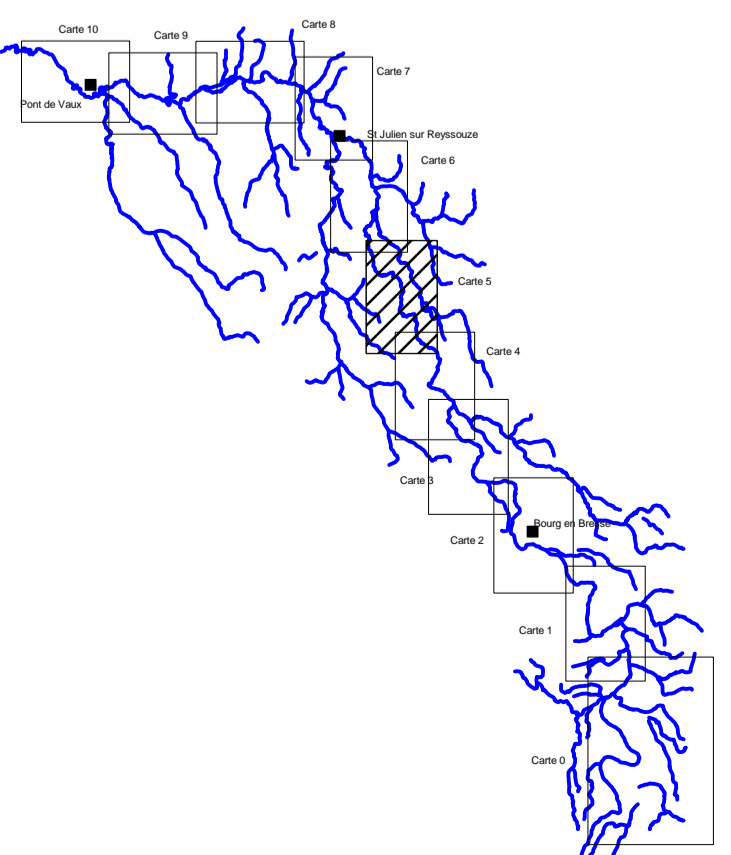


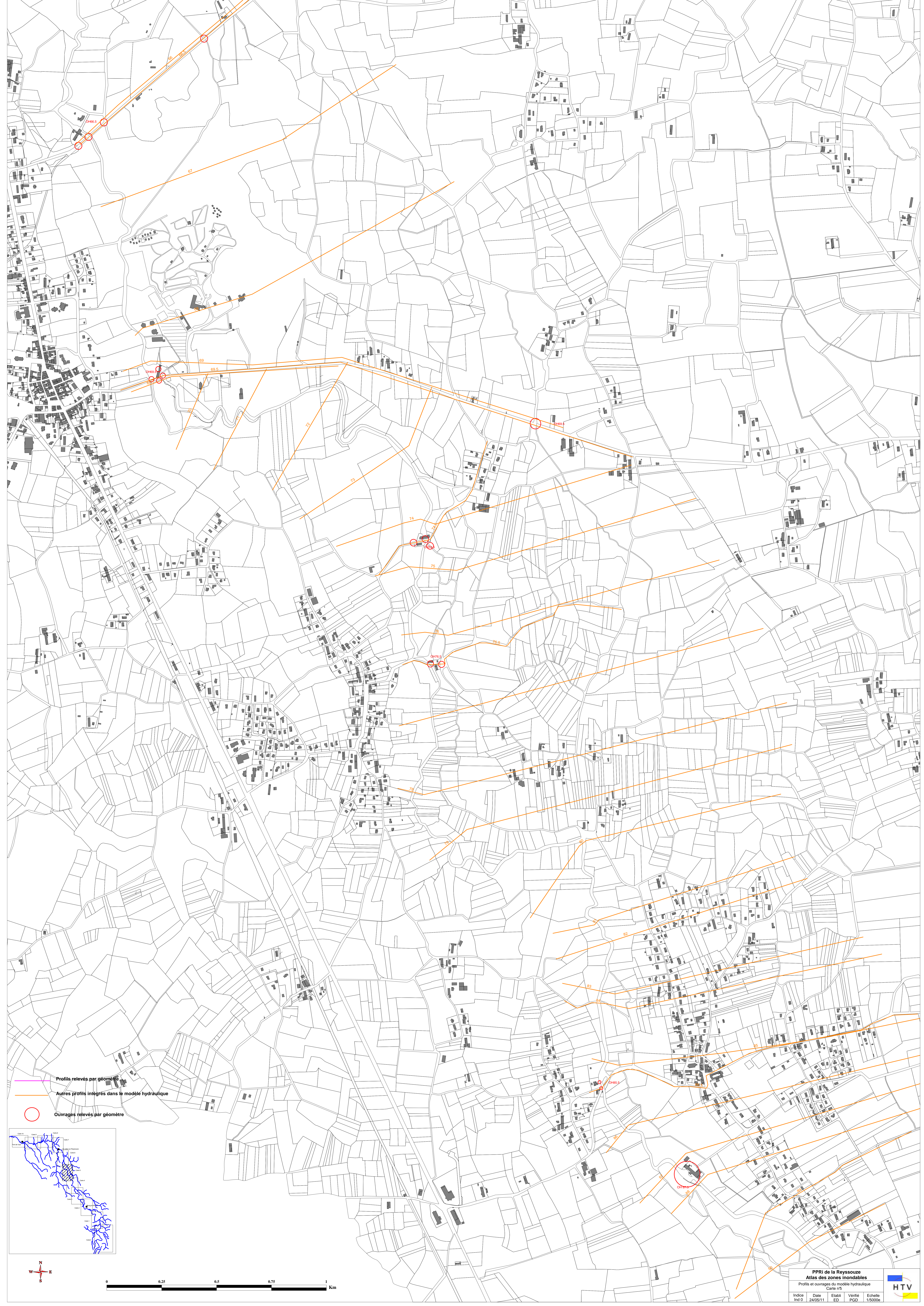


Profils relevés par géomètre

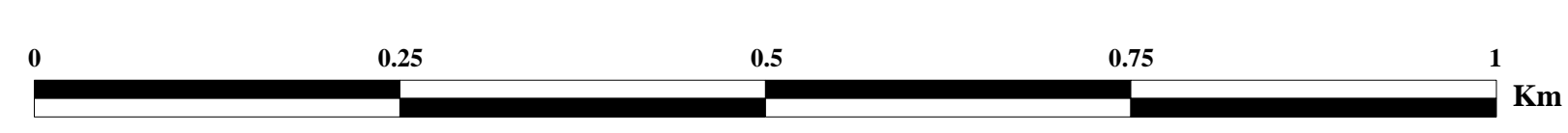
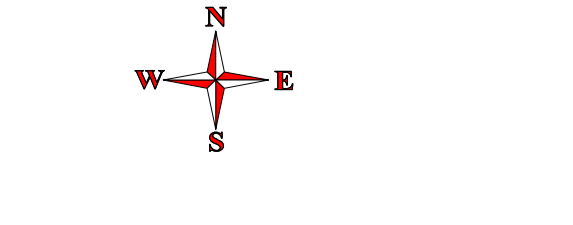
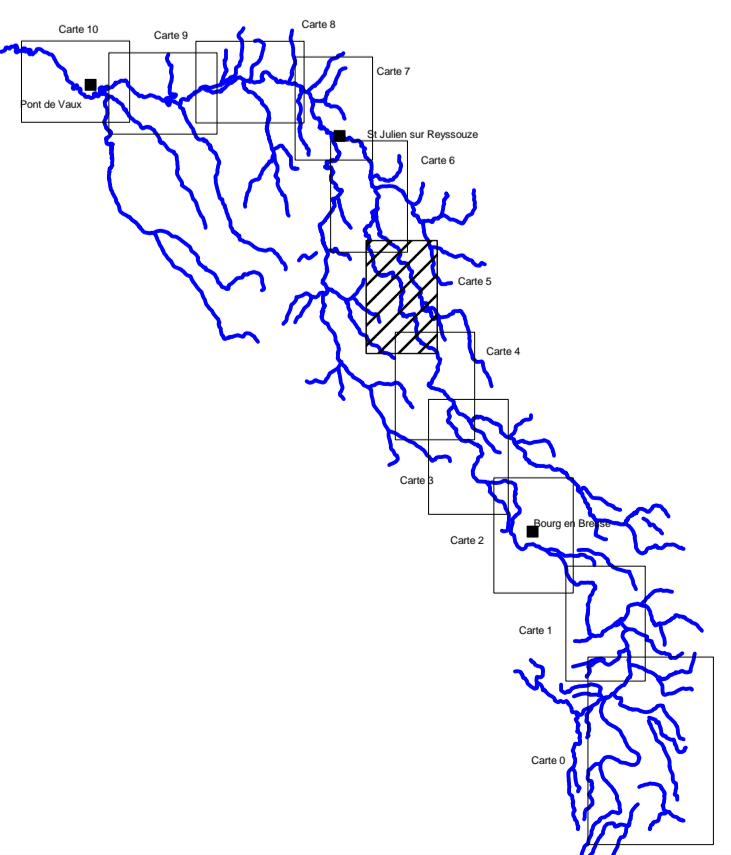
Autres profils intégrés dans le modèle hydraulique

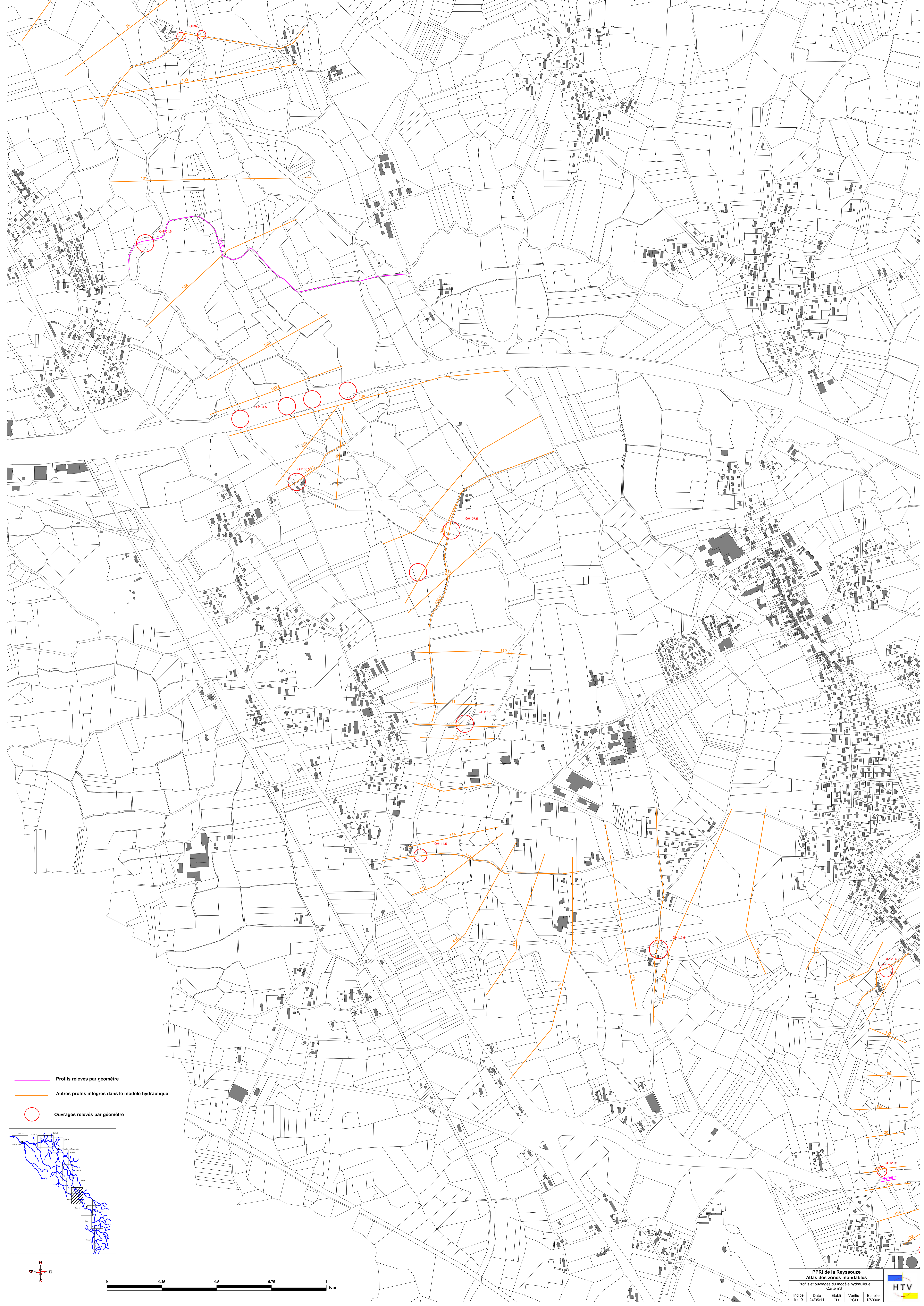
Ouvrages relevés par géomètre



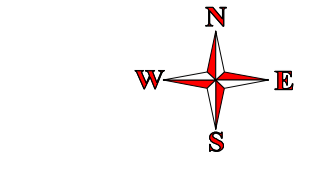
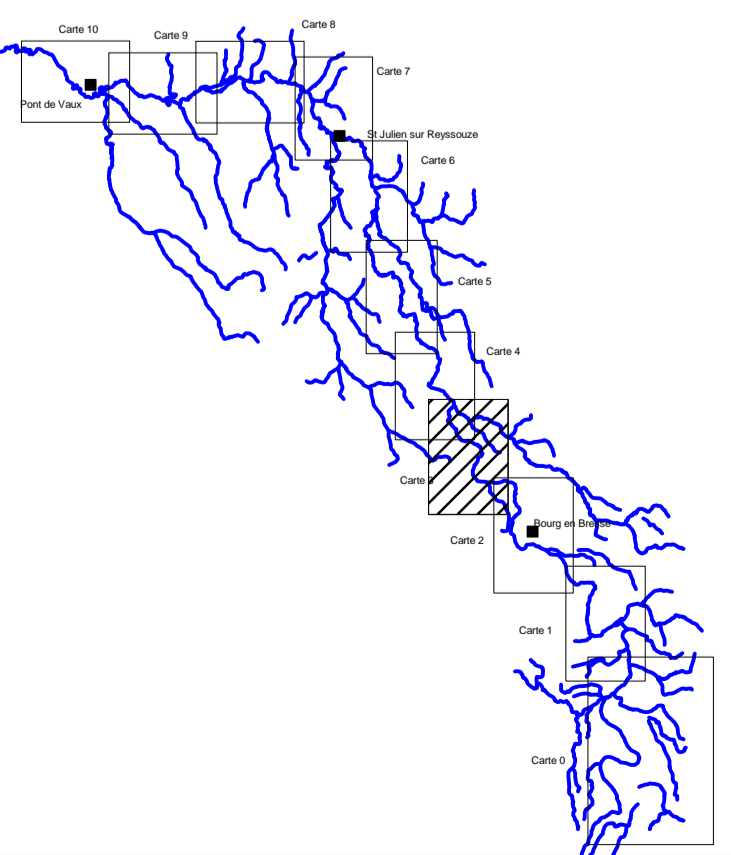


— Profils relevés par géomètre
— Autres profils intégrés dans le modèle hydraulique
○ Ouvrages relevés par géomètre








- Profils relevés par géomètre
- Autres profils intégrés dans le modèle hydraulique
- Ouvrages relevés par géomètre





 Profils relevés par géomètre
 Autres profils intégrés dans le modèle hydraulique
 Ouvrages relevés par géomètre

